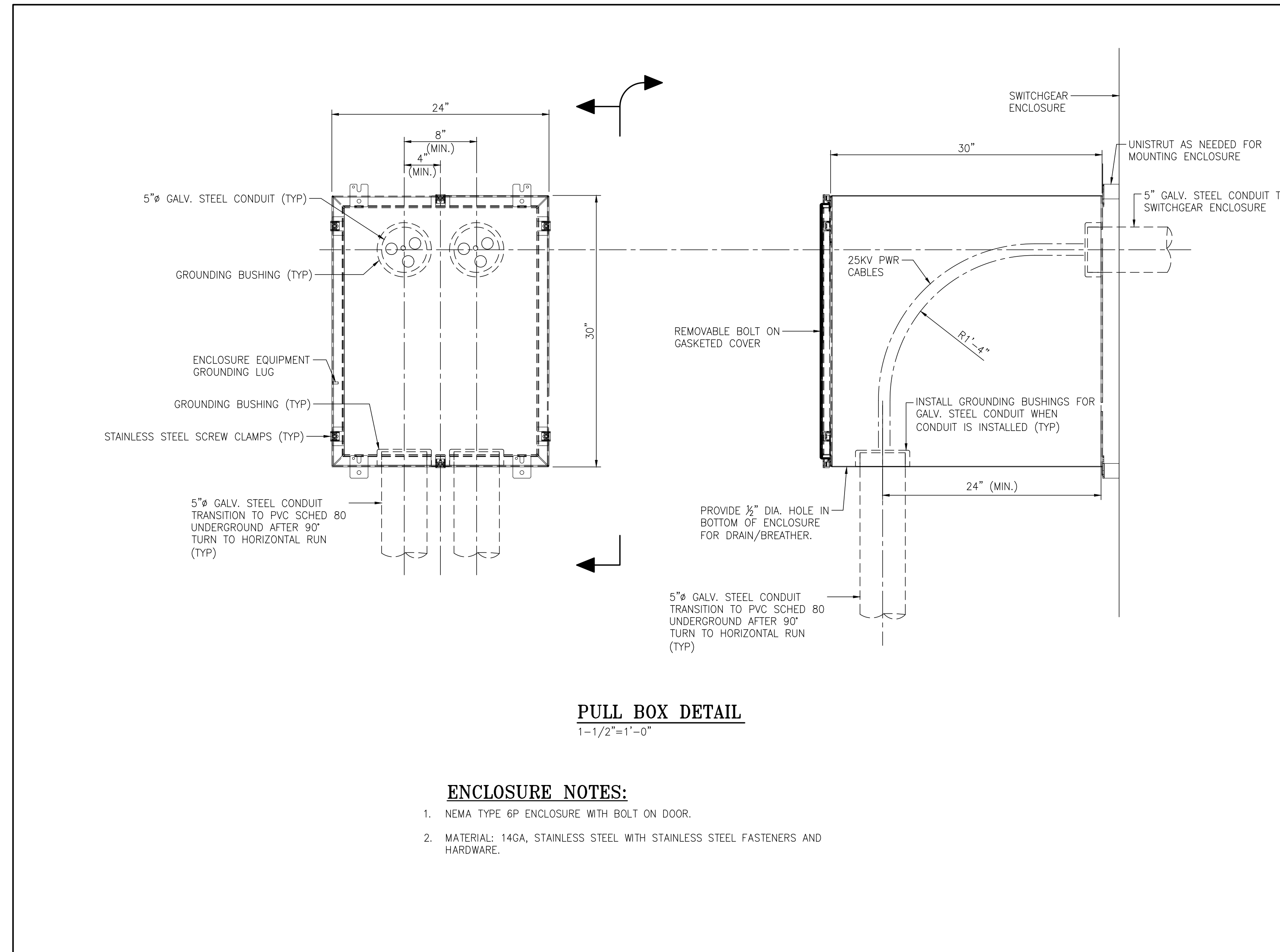


ELECTRICAL GENERAL NOTES:

- SEE DRAWING E1 FOR GENERAL NOTES, PROJECT DRAWING LIST AND GROUNDING DETAILS.



CLIENT DWG NO:	McDUFFIE COAL TERMINAL 23KV INCOMING POWER CABLE REPLACEMENT CABLE PULL BOX DETAILS
FOR:	ALABAMA STATE PORT AUTHORITY
PROJECT NO:	DWG NO: E1
REV:	A



THIS DOCUMENT IS THE PROPERTY OF APTIM. IT MAY CONTAIN INFORMATION DESCRIBING TECHNOLOGY OWNED BY APTIM AND DEEMED TO BE COMMERCIALY SENSITIVE. IT IS TO BE USED ONLY IN CONNECTION WITH WORK BEING PERFORMED BY APTIM. REPRODUCTION IN WHOLE OR IN PART FOR ANY PURPOSE OTHER THAN WORK PERFORMED BY APTIM IS FORBIDDEN EXCEPT BY EXPRESS WRITTEN PERMISSION OF APTIM. IT IS TO BE SAFEGUARDED AGAINST BOTH DELIBERATE AND INADVERTENT DISCLOSURE TO ANY THIRD PARTY.

NO.	REVISION	DRAWN	CK'D	APPD	DATE
A	ISSUED FOR REVIEW	WMB			07/01/21
REFERENCE DRAWINGS					