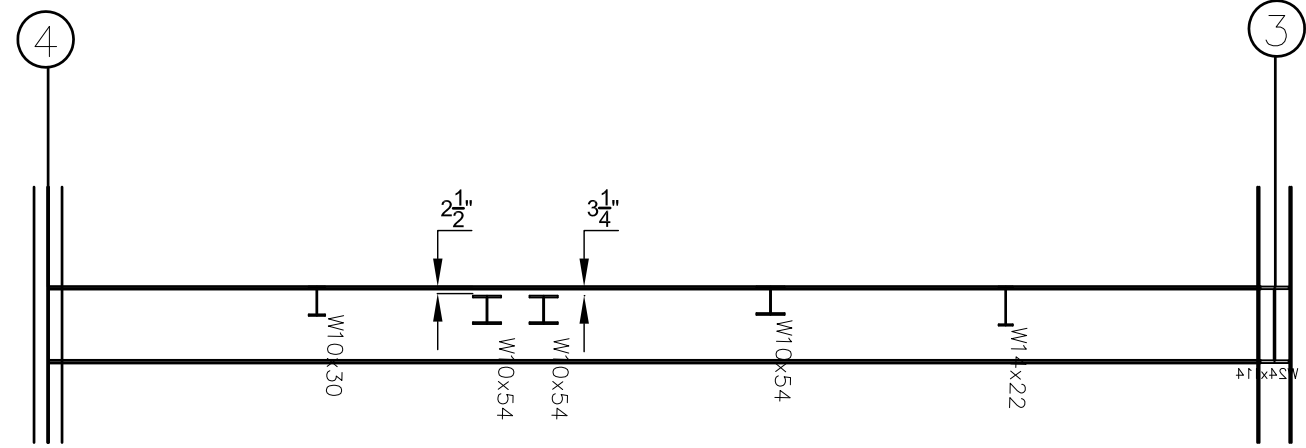
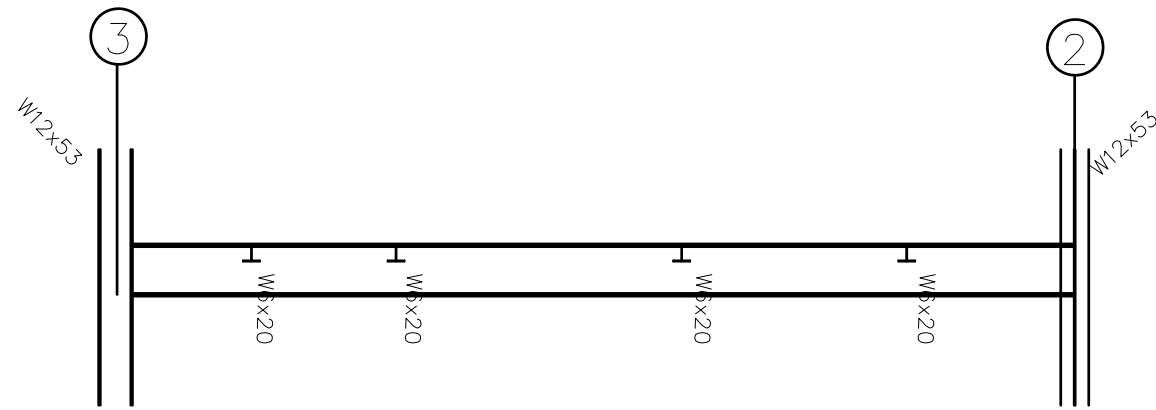


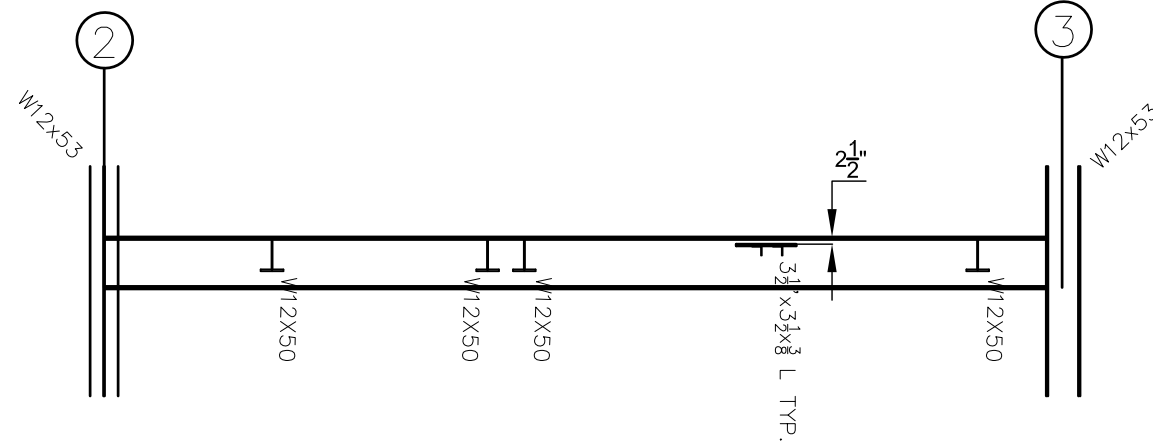
COLUMN LINE "B"  
LOOKING NORTH



COLUMN LINE "B"  
LOOKING SOUTH




COLUMN LINE "C"  
LOOKING NORTH



COLUMN LINE "C"  
LOOKING SOUTH

NOTES:

1. LEAVE 3" CLEARANCE ON W27x114 C.L. "B" AND W18X71 C.L. "C" BEAMS TO FACILITATE INSTALLATION

A	04/16/20	T.M.A.	FOR BID
REV NO.	DATE:	BY	REVISION
 <b>ALABAMA STATE PORT AUTHORITY</b> ALABAMA			
<b>McDUFFIE COAL TERMINAL TOWER T-10 STRUCTURAL REPAIR BEAM SECTIONS</b>			
DWG BY:	DATE:	REVISIONS	
T.M.A.	04/16/20	BY:	DATE:
CHKD. BY:	DATE:	BY:	DATE:
....	04/16/20		
SCALE:			AS NOTED
DRAWING NO.:			T-10-1003