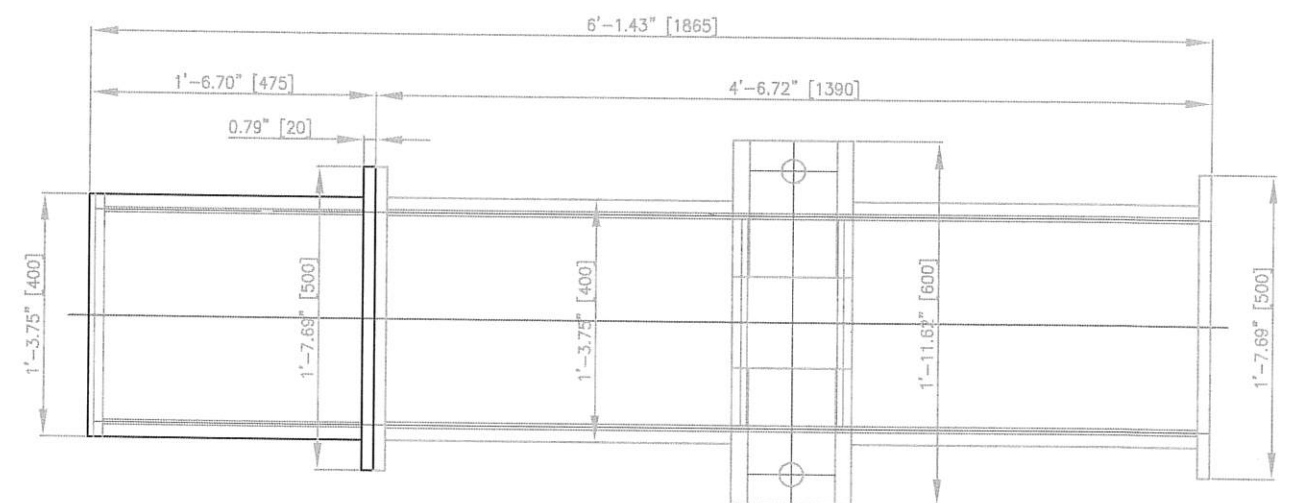



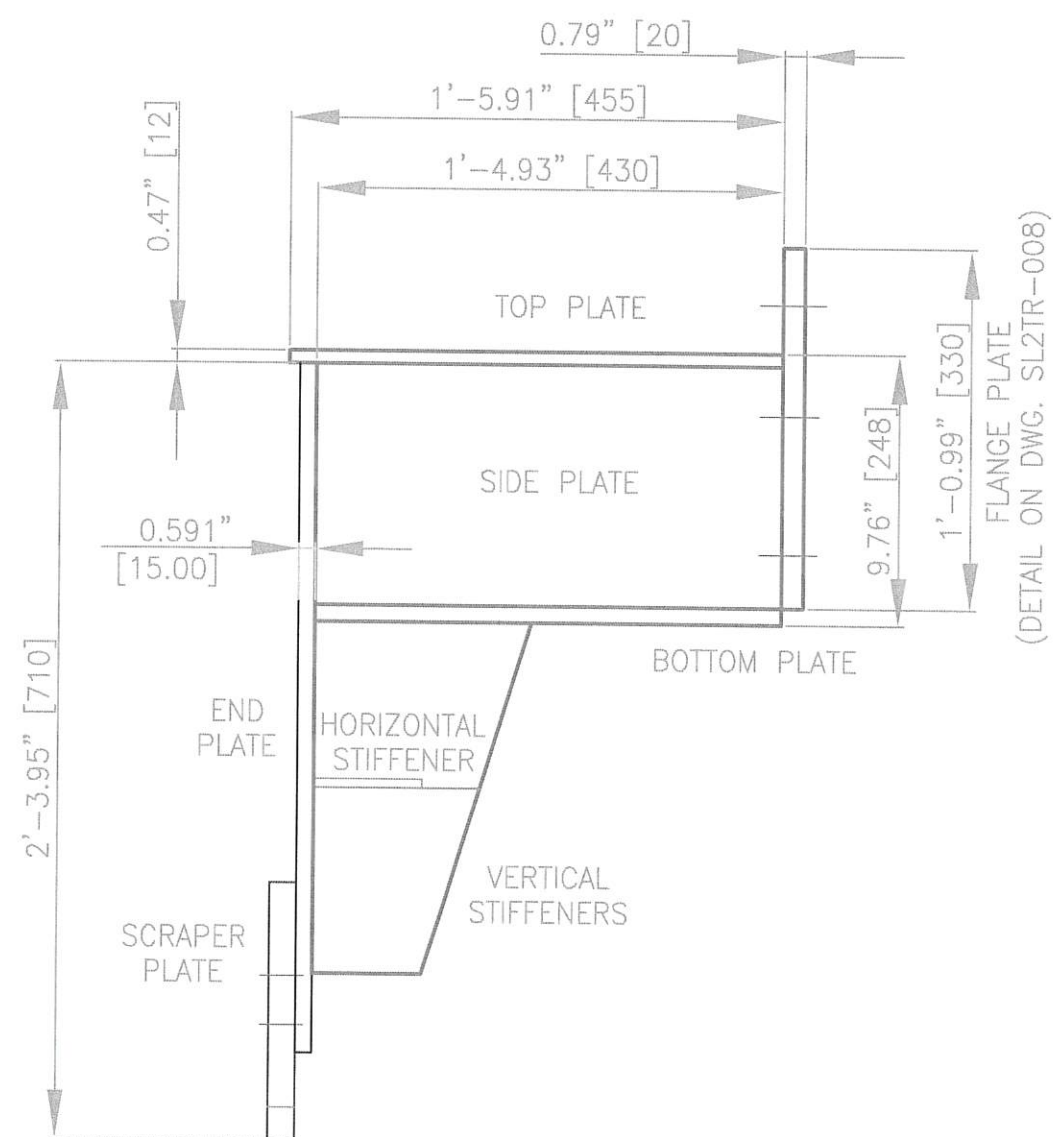
SIDE

END TRUCKS ASSEMBLY W/BUMPER
(2 REQUIRED.)



PLAN

REVISION NO.	DESCRIPTION	DATE	BY:	McDUFFIE COAL TERMINAL SHIPLOADER 2 – EQUALIZER/TRUCK REPLACE. BUMPER END TRUCK ASSEMBLY	 ALABAMA STATE PORT AUTHORITY
REVISION NO.	DESCRIPTION	DATE	BY:		
REVISION NO.	DESCRIPTION	DATE	BY:		
REVISION NO.	DESCRIPTION	DATE	BY:		
REV 0	ISSUED FOR BID	02/03/21	TMA		
				MOBILE	ALABAMA
				SCALE: N/A	DRAWN BY: T.M.A.
				DATE: 10-27-20	CHECKED BY:
				JOB NO.: MDL2102020	APPROVED BY:
				DRAWING NAME: SL2TR-013	REVISION NO.: 0



SIDE VIEW

BUMPER ASSEMBLY
 (2 REQUIRED TOTAL, ONE EA.) C.S

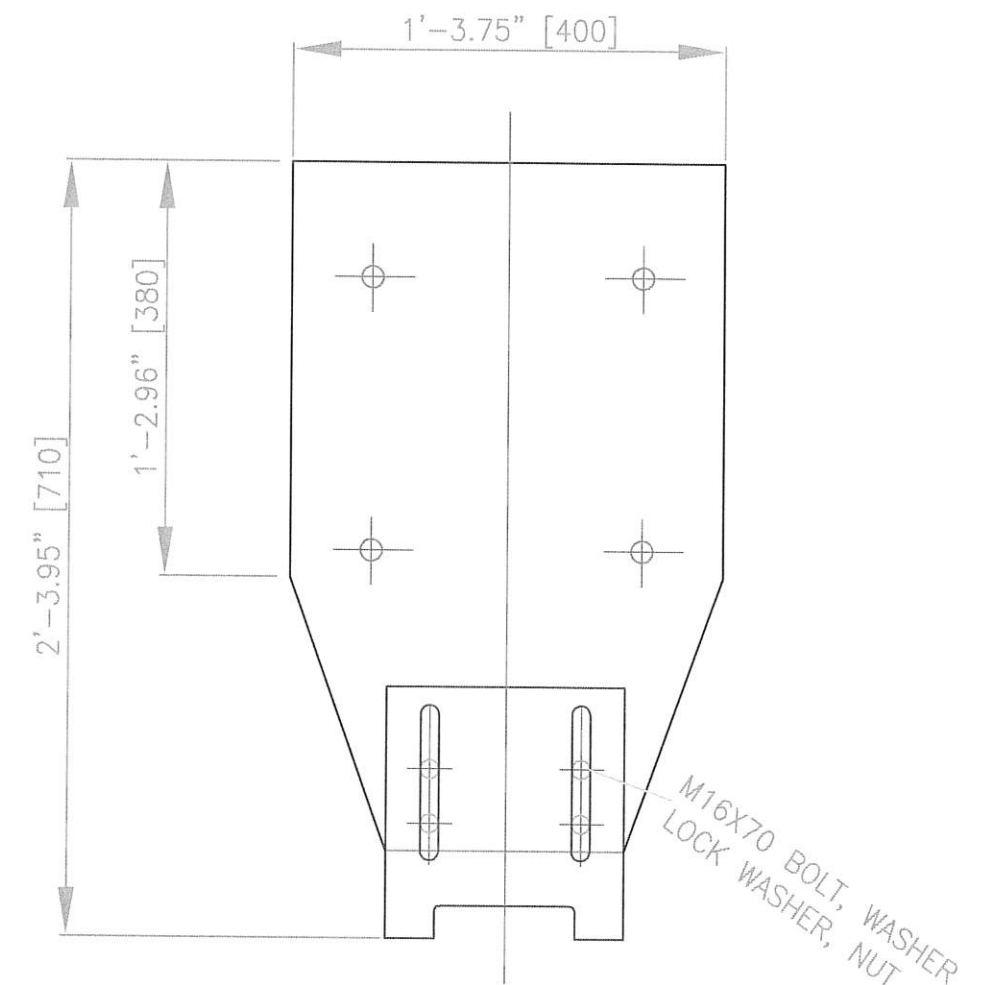

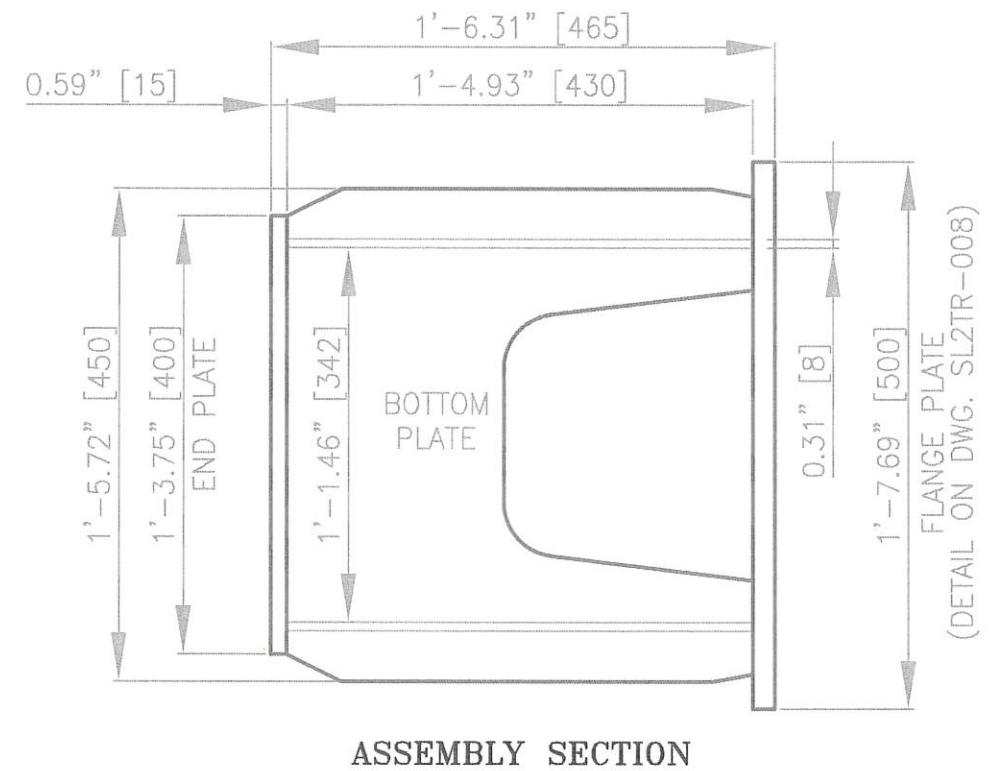
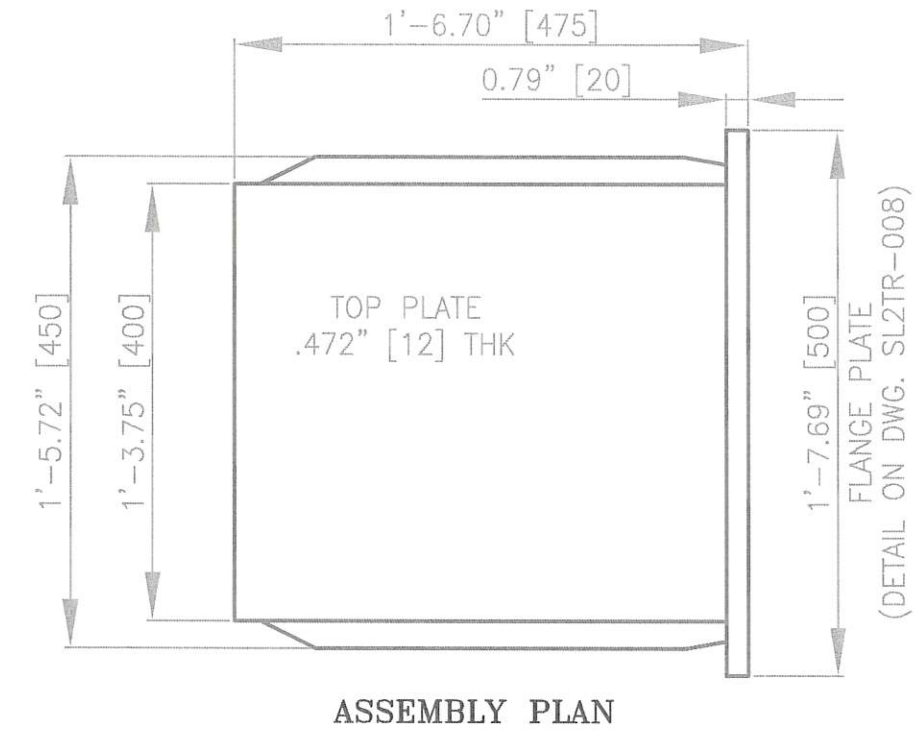
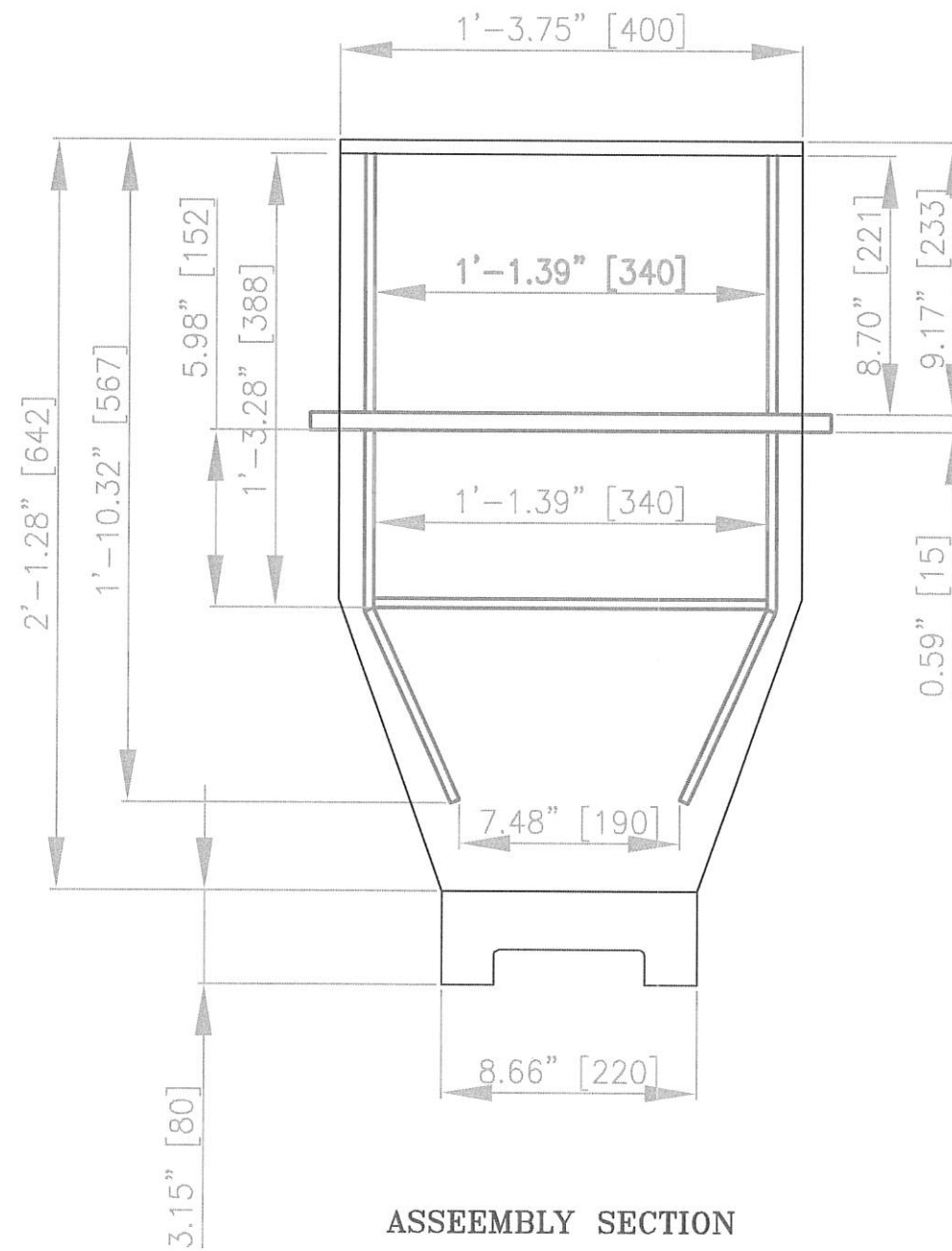
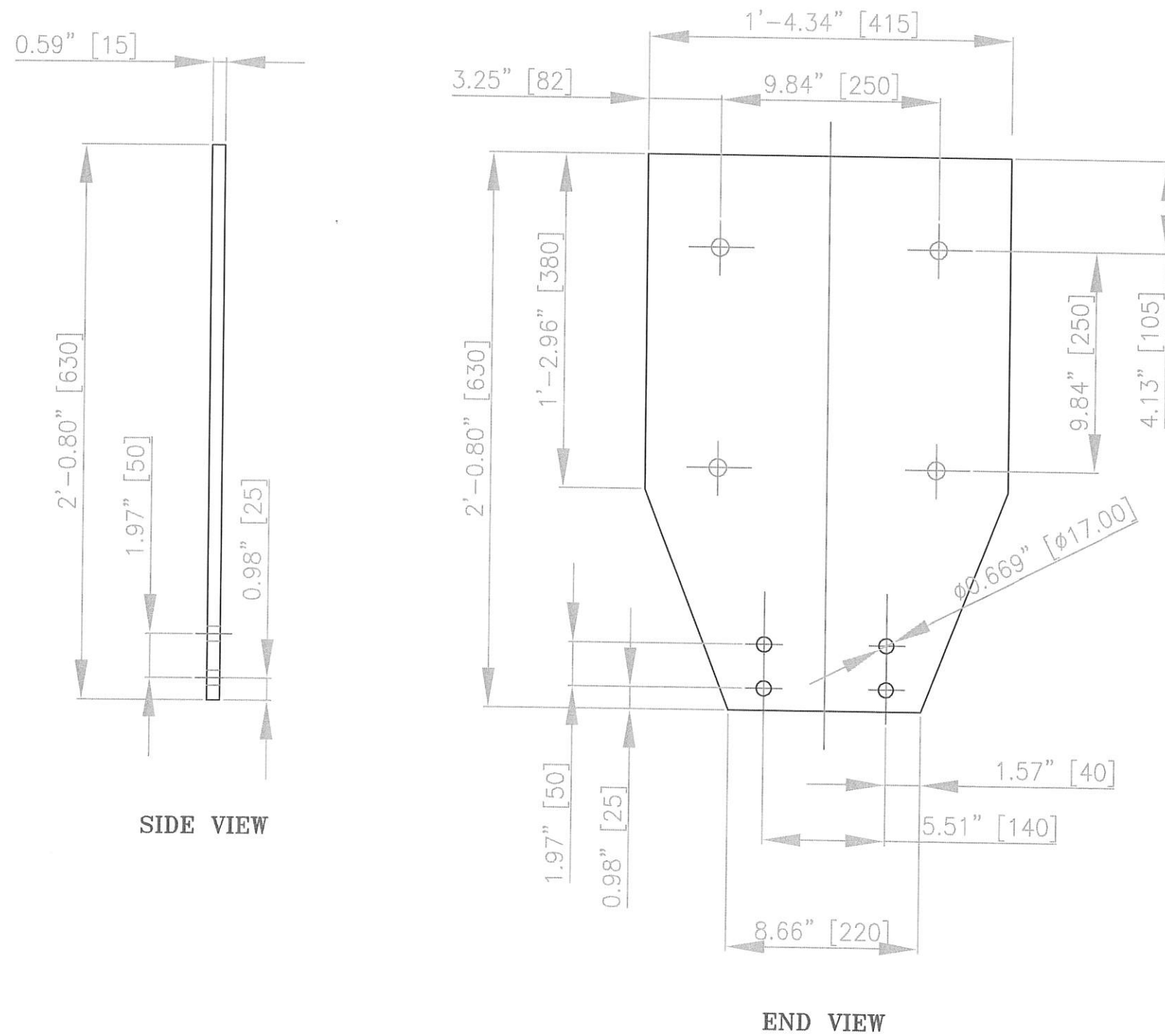


PLATE LAYOUT-FRONT VIEW
 TWO REQUIRED

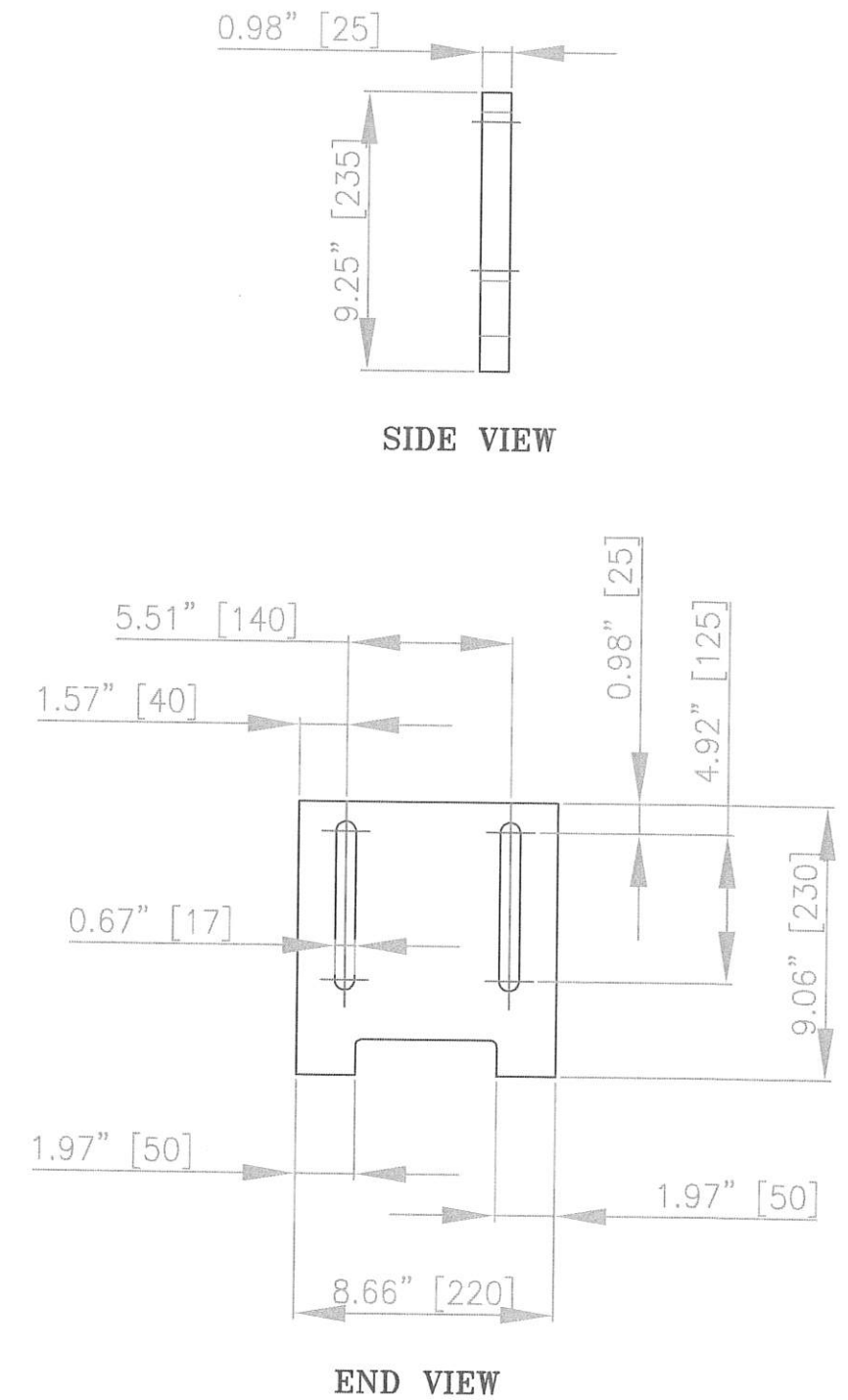
REVISION NO.	DESCRIPTION	DATE	BY:	McDUFFIE COAL TERMINAL SHIPLOADER 2 - EQUALIZER/TRUCK REPLACE.	 ALABAMA STATE PORT AUTHORITY MOBILE ALABAMA
REVISION NO.	DESCRIPTION	DATE	BY:		
REVISION NO.	DESCRIPTION	DATE	BY:		
REVISION NO.	DESCRIPTION	DATE	BY:		
REVISION NO.	DESCRIPTION	DATE	BY:		
REV 0	ISSUED FOR BID	02/03/21	TMA	BUMPER EXTENSION - LAYOUT	SCALE: N/A DATE: 10-27-20 DRAWN BY: T.M.A. JOB NO.: MDSL2102020 CHECKED BY: DRAWING NAME: SL2TR-014 APPROVED BY: REVISION NO.: 0




REVISION NO.	DESCRIPTION	DATE	BY:	McDUFFIE COAL TERMINAL SHIPLOADER 2 – EQUALIZER/TRUCK REPLACE.	 ALABAMA STATE PORT AUTHORITY			
REVISION NO.	DESCRIPTION	DATE	BY:					
REVISION NO.	DESCRIPTION	DATE	BY:					
REVISION NO.	DESCRIPTION	DATE	BY:					
REVISION NO.	DESCRIPTION	DATE	BY:	BUMPER EXTENSION –ASSEMBLY DETAILS	MOBILEALABAMA			
REVISION NO.	DESCRIPTION	DATE	BY:		SCALE: N/A	DRAWN BY: T.M.A.	CHECKED BY:	APPROVED BY:
REVISION NO.	DESCRIPTION	DATE	BY:		DATE : 10-27-20	JOB NO. : MDSL2102020	DRAWING NAME: SL2TR-015	REVISION NO. : 0
REV 0	ISSUED FOR BID	02/03/21	TMA					

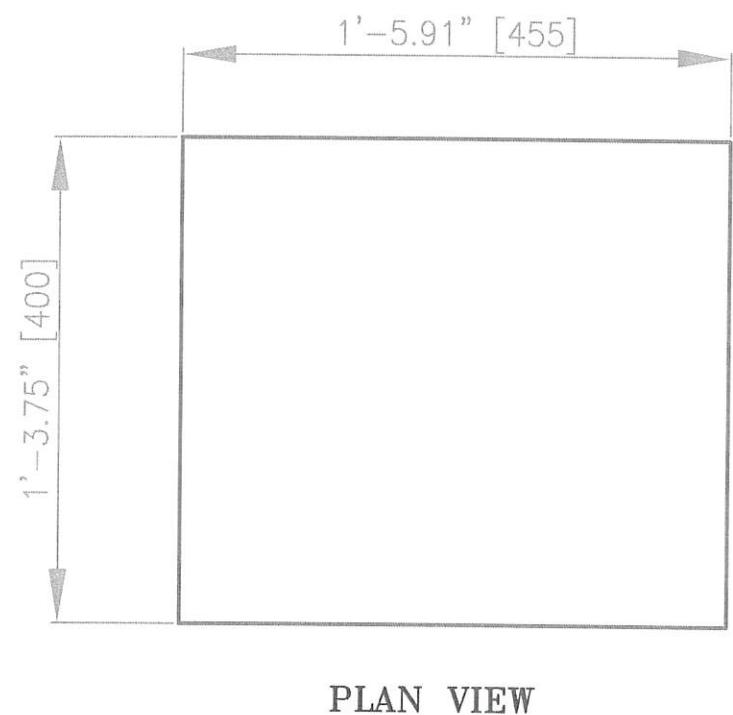
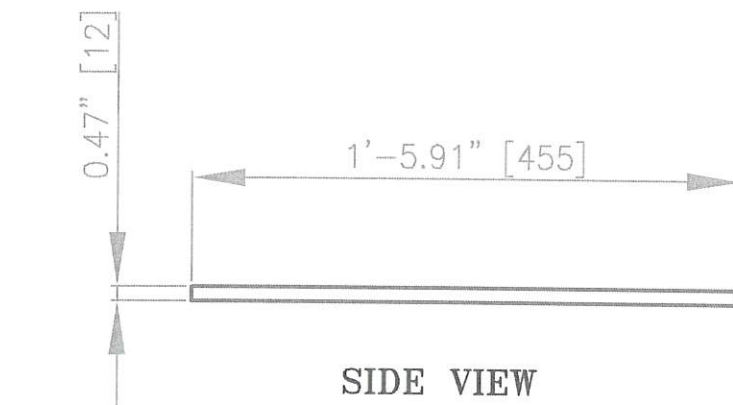


END PLATE LAYOUT
2 REQUIRED TOTAL (1 EA.), C.S.

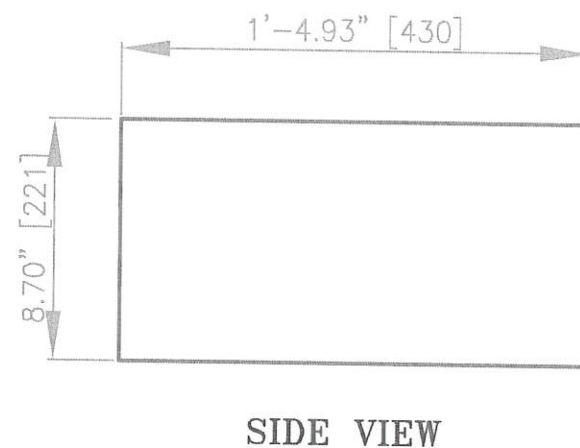
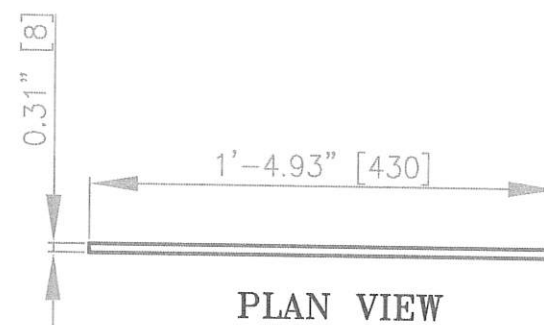


SCRAPER DETAIL
2 REQUIRED TOTAL (1 EA.), C.S.

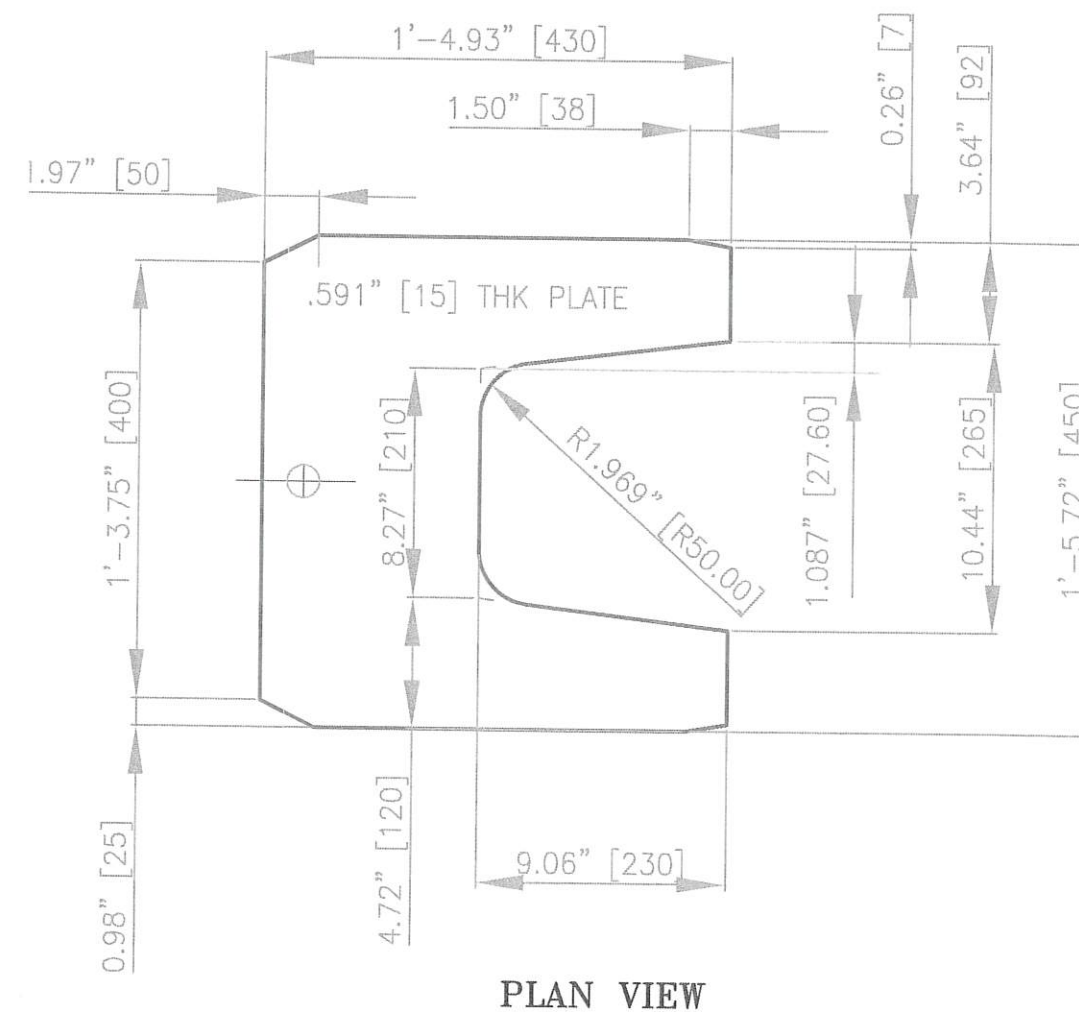
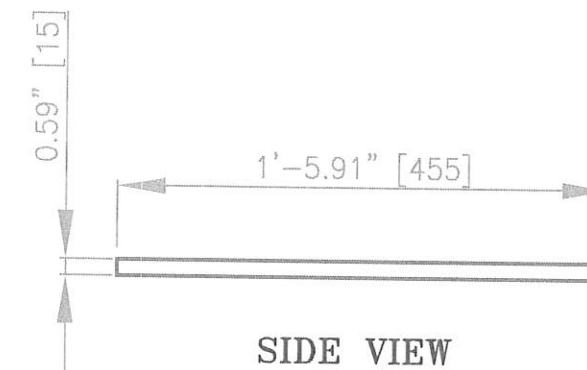
REVISION NO.	DESCRIPTION	DATE	BY:	McDUFFIE COAL TERMINAL SHIPLOADER 2 - EQUALIZER/TRUCK REPLACE. BUMPER END PLATE & SCRAPER DETAILS	 ALABAMA STATE PORT AUTHORITY <small>MOBILE ALABAMA</small>
REVISION NO.	DESCRIPTION	DATE	BY:		
REVISION NO.	DESCRIPTION	DATE	BY:		
REVISION NO.	DESCRIPTION	DATE	BY:		
REV 0	ISSUED FOR BID	02/03/21	TMA		
				SCALE: N/A	DRAWN BY: T.M.A.
				DATE: 10-27-20	CHECKED BY:
				JOB NO.: MDL2102020	APPROVED BY:
				DRAWING NAME: SL2TR-016	REVISION NO.: 0




TOP PLATE DETAIL
(2 REQUIRED TOTAL, ONE EA.), C.S.

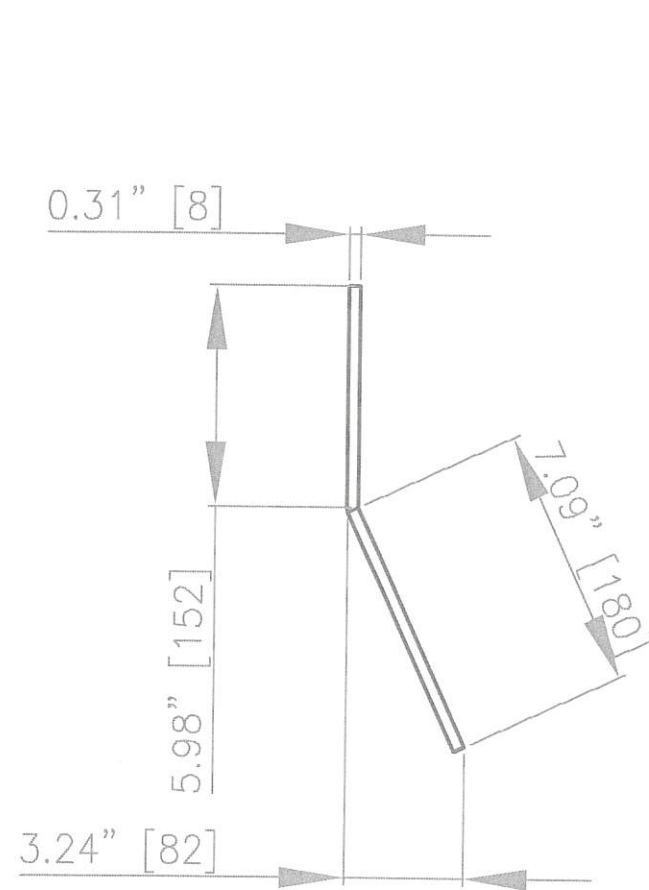


SIDE PLATE DETAIL
(4 REQUIRED TOTAL, TWO EA.), C.S.

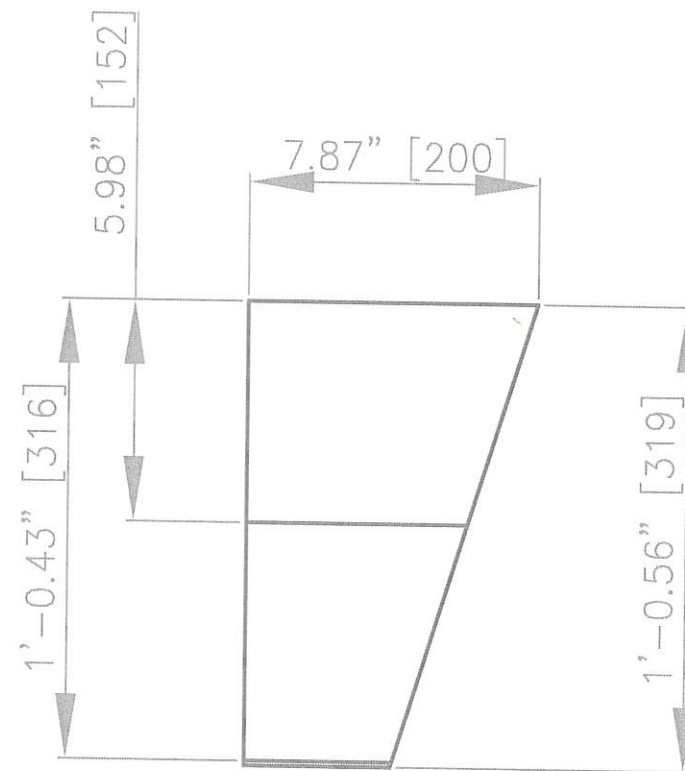


BOTTOM PLATE DETAIL
(2 REQUIRED TOTAL, ONE EA.), C.S.

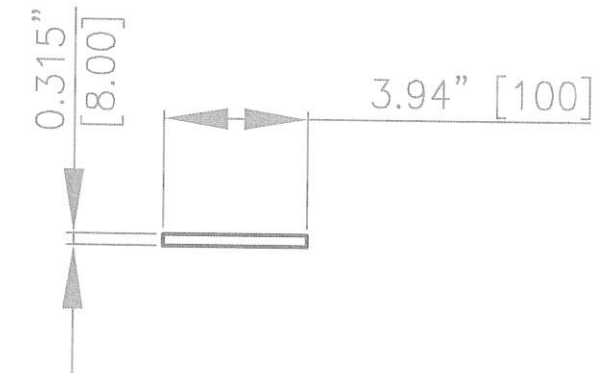
REVISION NO.	DESCRIPTION	DATE	BY:	McDUFFIE COAL TERMINAL SHIPLOADER 2 – EQUALIZER/TRUCK REPLACE.	 ALABAMA STATE PORT AUTHORITY <small>MOBILE ALABAMA</small>
REVISION NO.	DESCRIPTION	DATE	BY:		
REVISION NO.	DESCRIPTION	DATE	BY:		
REVISION NO.	DESCRIPTION	DATE	BY:		
REVISION NO.	DESCRIPTION	DATE	BY:		
REV 0	ISSUED FOR BID	02/03/21	TMA	BUMPER –TOP, SIDE & BOTTOM PLATES	SCALE: N/A DATE: 10-27-20 DRAWN BY: T.M.A. JOB NO.: MDL2102020 CHECKED BY: DRAWING NAME: SL2TR-017 APPROVED BY: REVISION NO.: 0



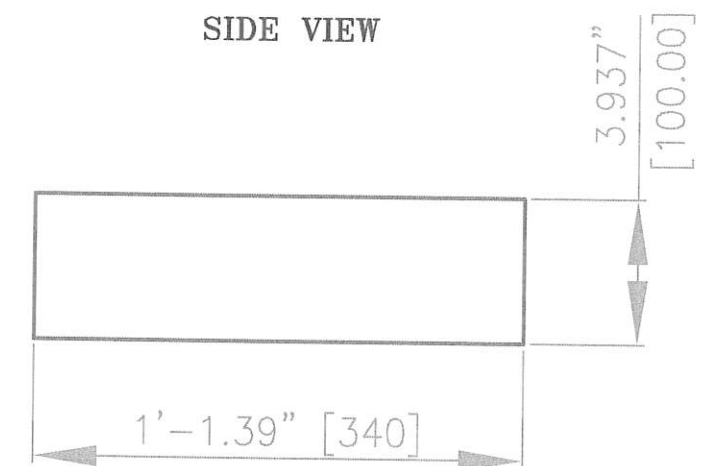
END VIEW



SIDE VIEW




SIDE VIEW



PLAN VIEW

VERTICAL STIFFENER
4 REQUIRED TOTAL (2 EA., ONE OPPOSITE HAND), C.S.

HORIZONTAL STIFFENER
2 REQUIRED TOTAL (1 EA.), C.S.

REVISION NO.	DESCRIPTION	DATE	BY:	McDUFFIE COAL TERMINAL SHIPLOADER 2 – EQUALIZER/TRUCK REPLACE.	 ALABAMA STATE PORT AUTHORITY <small>MOBILE ALABAMA</small>
REVISION NO.	DESCRIPTION	DATE	BY:		
REVISION NO.	DESCRIPTION	DATE	BY:		
REVISION NO.	DESCRIPTION	DATE	BY:		
REV 0	ISSUED FOR INFO	02/03/21	TMA		
BUMPER EXTENSION-STIFFENERS DETAILS				SCALE: N/A	<small>DRAWN BY: T.M.A.</small> <small>CHECKED BY:</small> <small>APPROVED BY:</small>
				DATE: 10-27-20	<small>JOB NO.: MDL2102020</small> <small>DRAWING NAME: SL2TR-018</small> <small>REVISION NO.: 0</small>