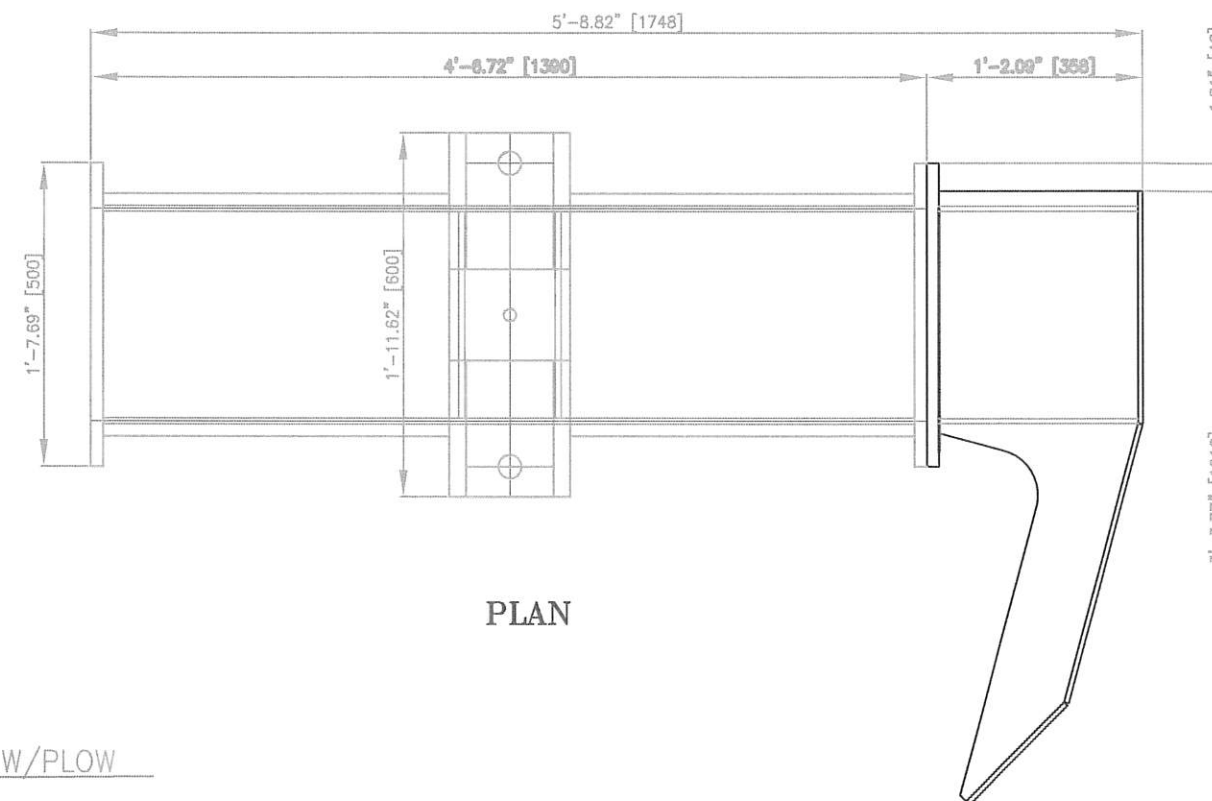


SIDE



PLAN

END TRUCKS ASSEMBLY W/PLOW
(2 REQUIRED.)

REVISION NO.	DESCRIPTION	DATE	BY:
REVISION NO.	DESCRIPTION	DATE	BY:
REVISION NO.	DESCRIPTION	DATE	BY:
REVISION NO.	DESCRIPTION	DATE	BY:
REVISION NO.	DESCRIPTION	DATE	BY:
REV 0	ISSUED FOR BID	02/03/21	TMA

McDUFFIE COAL TERMINAL
SHIPLOADER 2 – EQUALIZER/TRUCK REPLACE.

PLOW END TRUCK ASSEMBLY

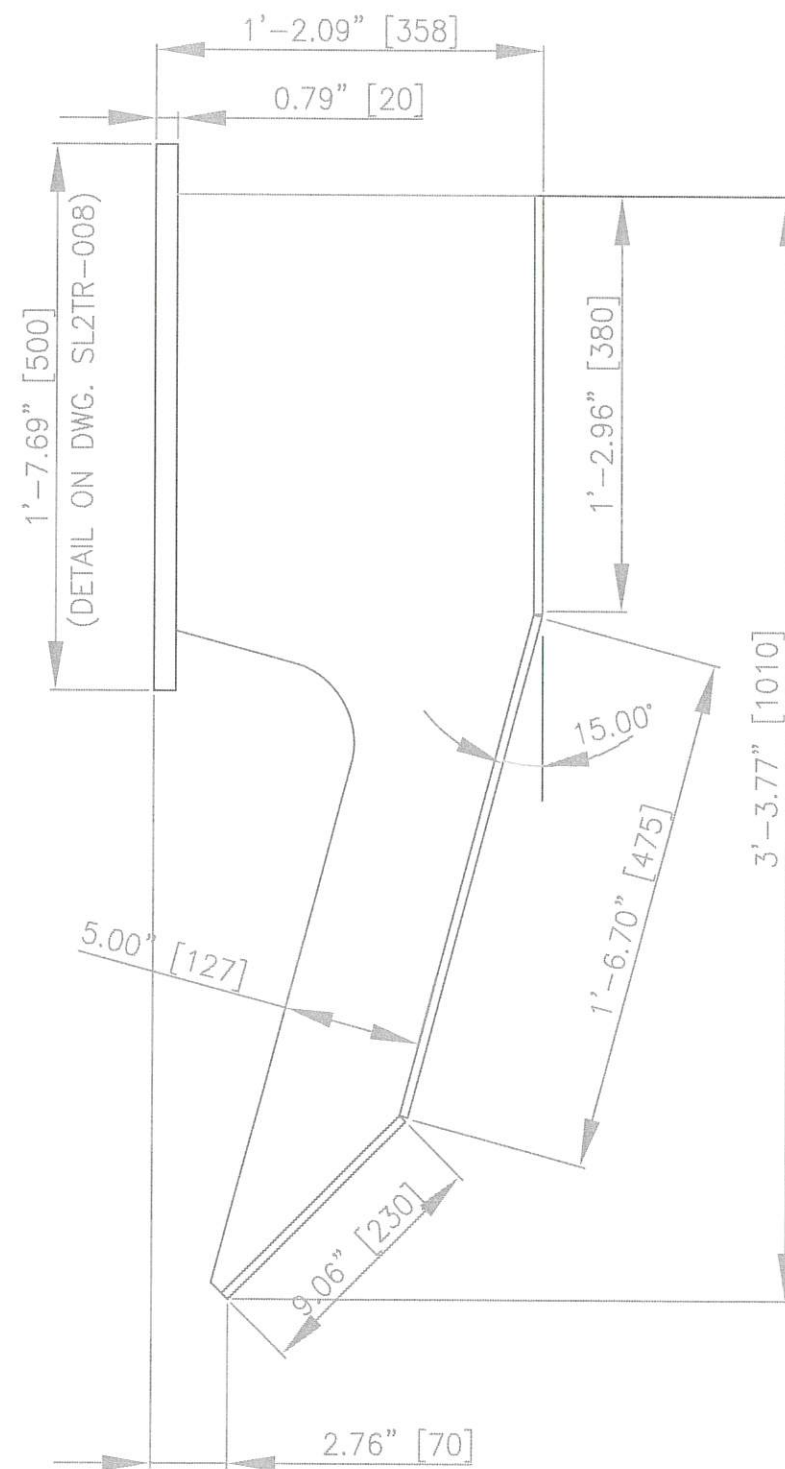


ALABAMA STATE
PORT AUTHORITY

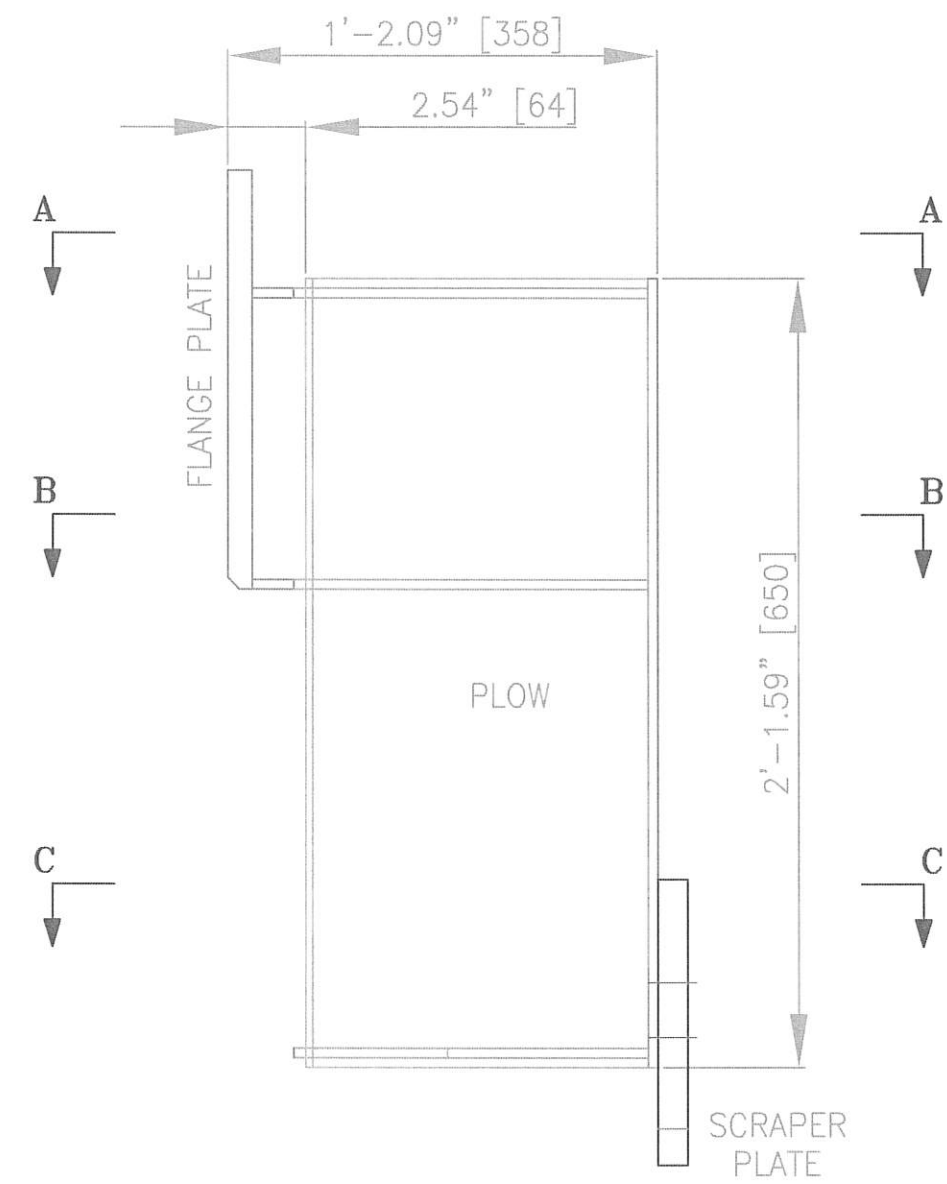
MOBILE

ALABAMA

SCALE: N/A	DRAWN BY: T.M.A.	CHECKED BY:	APPROVED BY:
DATE: 10-27-20	JOB NO.: MDL2102020	DRAWING NAME: SL2TR-019	REVISION NO.: 0




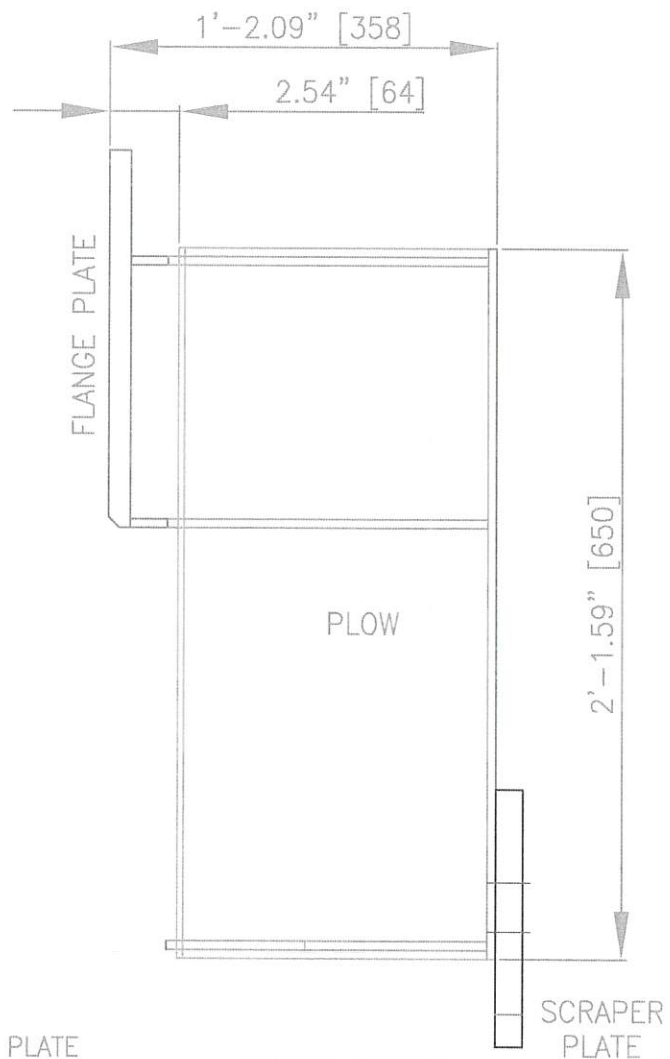
PLAN VIEW



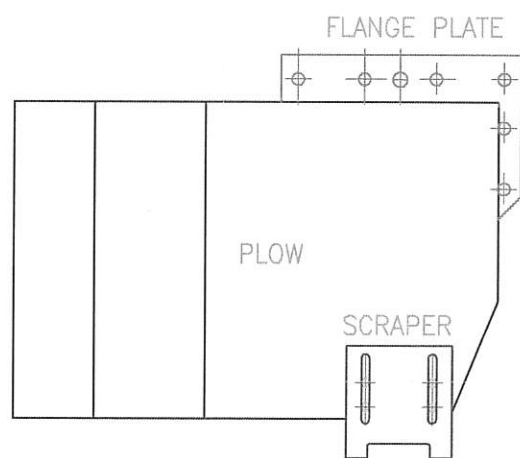
SIDE VIEW

END TRUCK PLOW
(2 REQUIRED TOTAL, ONE EA.), 5/16" [8MM] C.S.

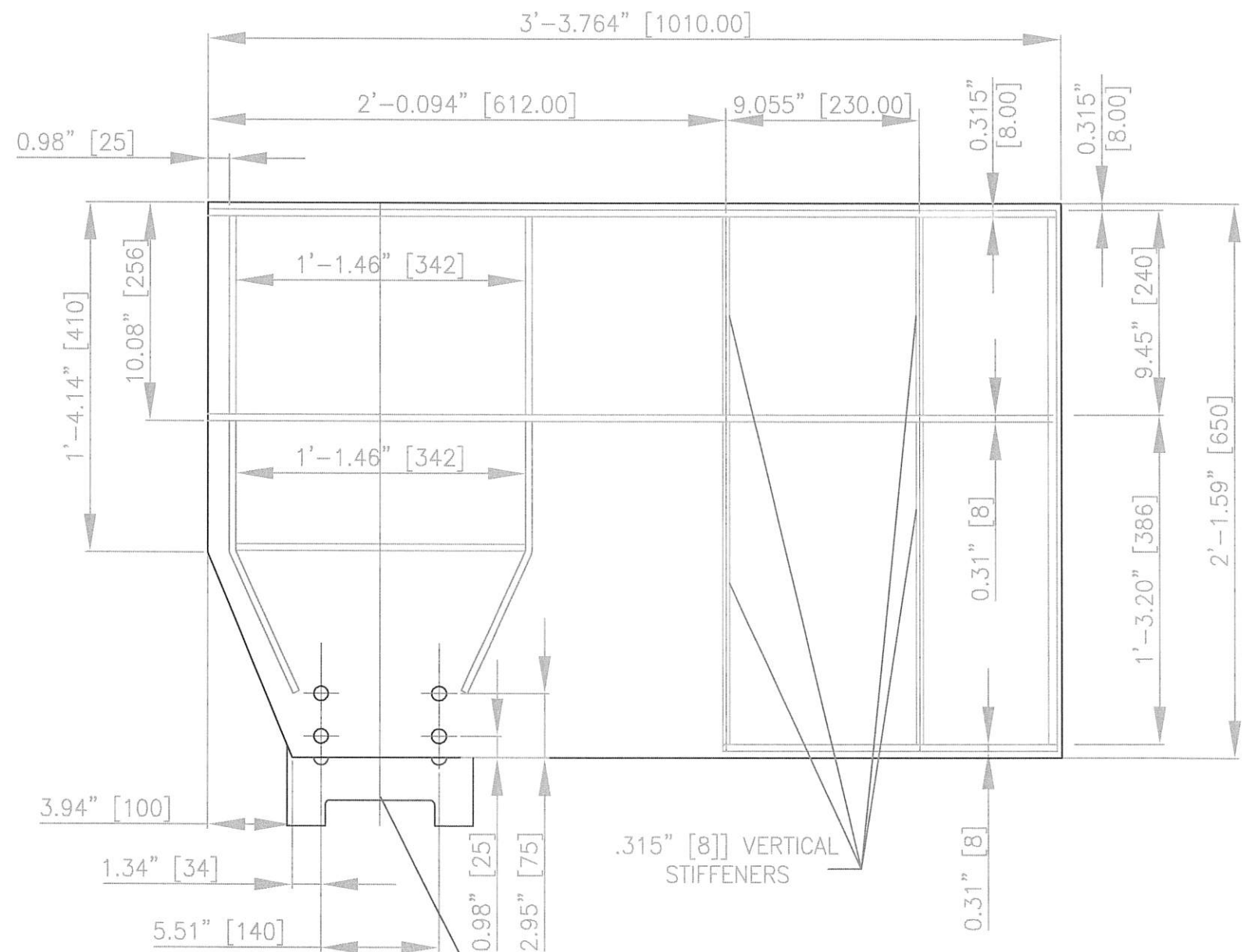
REVISION NO.	DESCRIPTION	DATE	BY:	McDUFFIE COAL TERMINAL SHIPLOADER 2 – EQUALIZER/TRUCK REPLACE.	 ALABAMA STATE PORT AUTHORITY <small>MOBILE ALABAMA</small>
REVISION NO.	DESCRIPTION	DATE	BY:		
REVISION NO.	DESCRIPTION	DATE	BY:		
REVISION NO.	DESCRIPTION	DATE	BY:		
REVISION NO.	DESCRIPTION	DATE	BY:		
REV 0	ISSUED FOR BID	02/03/21	TMA	END TRUCK PLOW–PLAN & SIDE ELEV.	SCALE: N/A DATE: 10-27-20 DRAWN BY: T.M.A. JOB NO.: MDL2102020 CHECKED BY: DRAWING NAME: SL2TR-020 APPROVED BY: REVISION NO.: 0



SIDE VIEW




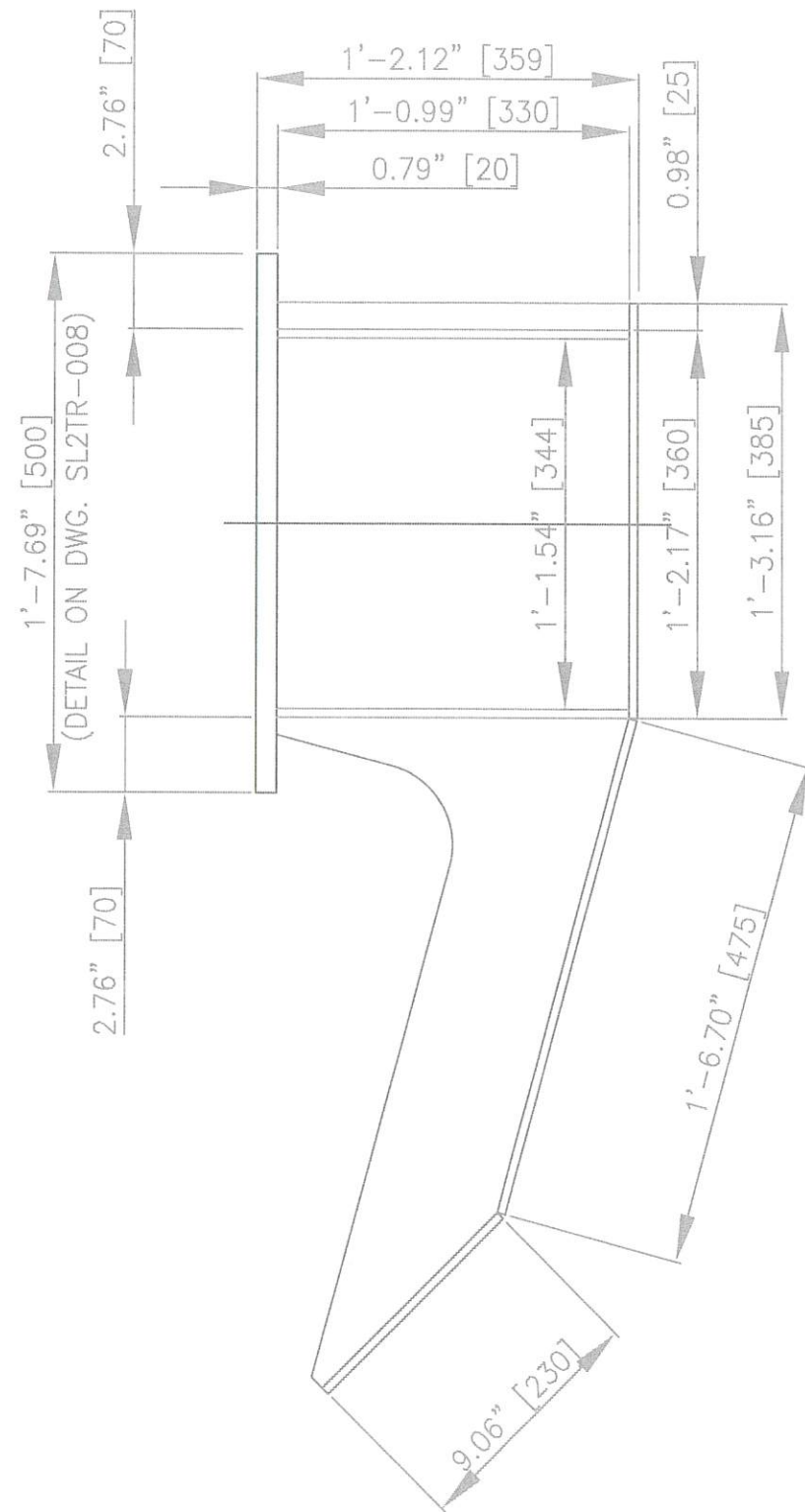
END TRUCK PLOW FRONT ELEV.
(2 REQUIRED TOTAL), C.S.



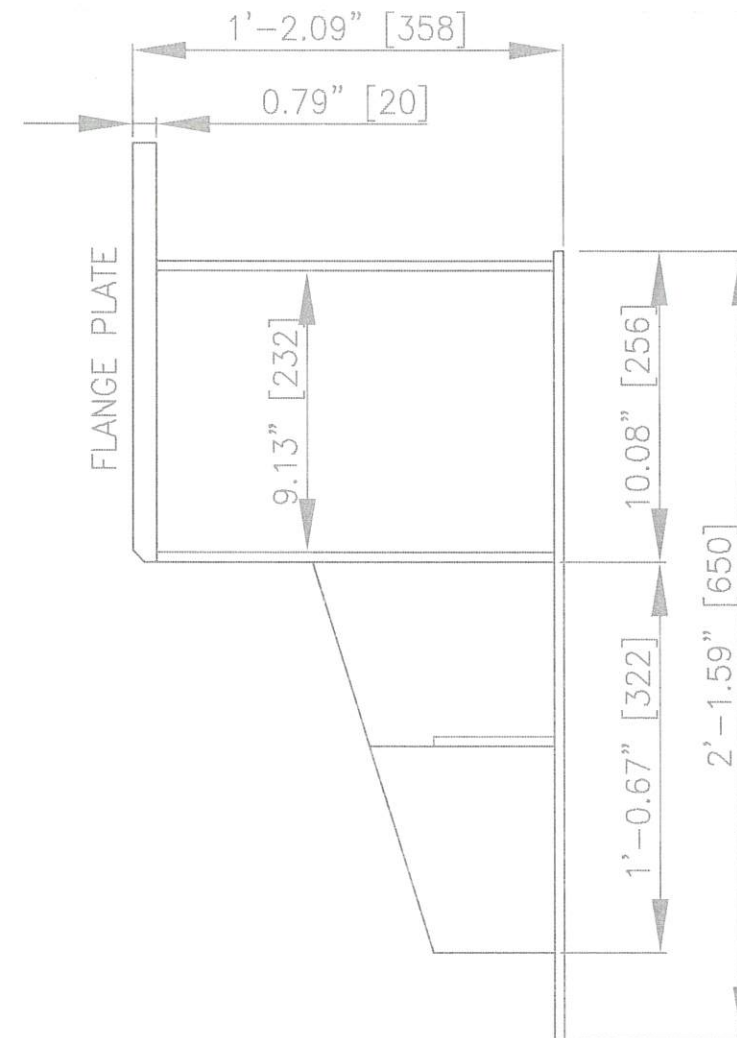
SECTION VIEW FROM BACK

SCRAPER DETAIL ON DWG. SL2TR-016


REVISION NO.	DESCRIPTION	DATE	BY:	McDUFFIE COAL TERMINAL SHIPLOADER 2 – EQUALIZER/TRUCK REPLACE.	 ALABAMA STATE PORT AUTHORITY <small>MOBILE ALABAMA</small>
REVISION NO.	DESCRIPTION	DATE	BY:		
REVISION NO.	DESCRIPTION	DATE	BY:		
REVISION NO.	DESCRIPTION	DATE	BY:		
REVISION NO.	DESCRIPTION	DATE	BY:		
REV 0	ISSUED FOR BID	02/03/21	TMA	END TRUCK PLOW-FRONT ELEV.	SCALE: N/A DATE: 10-27-20 DRAWN BY: T.M.A. JOB NO.: MDSL2102020 CHECKED BY: DRAWING NAME: SL2TR-021 APPROVED BY: REVISION NO.: 0

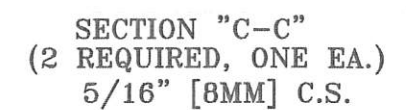
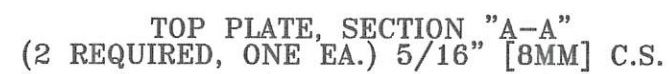


ASSEMBLY PLAN

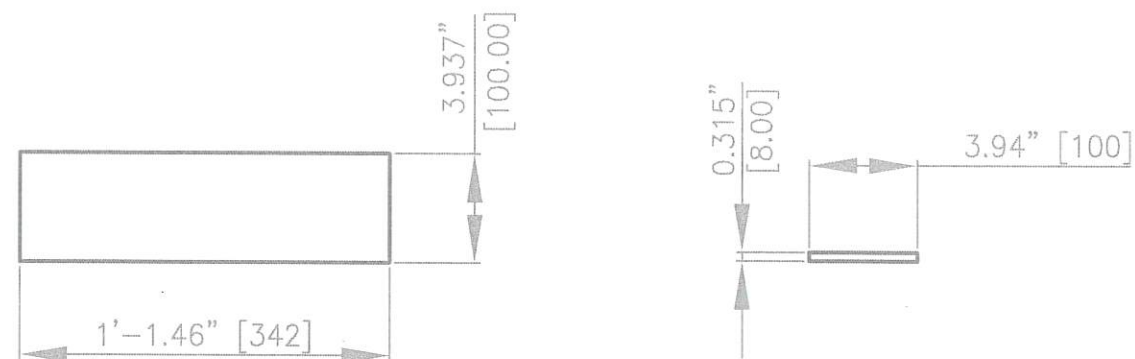


ELEVATION

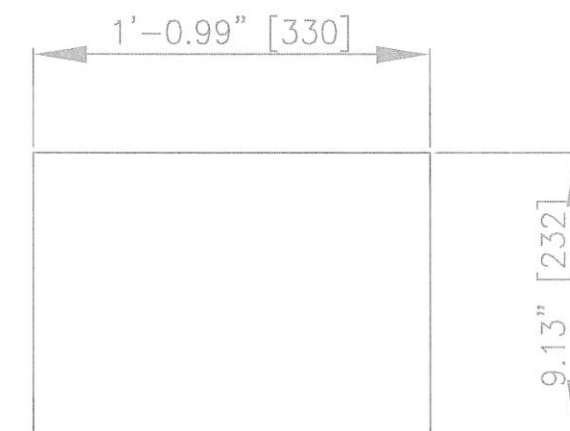
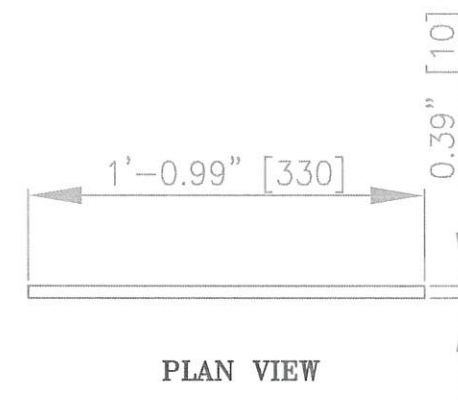
REVISION NO.	DESCRIPTION	DATE	BY:	McDUFFIE COAL TERMINAL SHIPLOADER 2 – EQUALIZER/TRUCK REPLACE.	 ALABAMA STATE PORT AUTHORITY
REVISION NO.	DESCRIPTION	DATE	BY:		
REVISION NO.	DESCRIPTION	DATE	BY:		
REVISION NO.	DESCRIPTION	DATE	BY:		
REVISION NO.	DESCRIPTION	DATE	BY:		
REV 0	ISSUED FOR BID	02/03/21	TMA	END TRUCK PLOW-ASSEMBLY DETAILS	<div> <div>MOBILE</div> <div> <div>SCALE: N/A</div> <div>DATE: 10-27-20</div> </div> <div> <div>DRAWN BY: T.M.A.</div> <div>JOB NO.: MDL2102020</div> </div> <div> <div>CHECKED BY:</div> <div>DRAWING NAME: SL2TR-022</div> </div> <div> <div>APPROVED BY:</div> <div>REVISION NO.: 0</div> </div> </div>



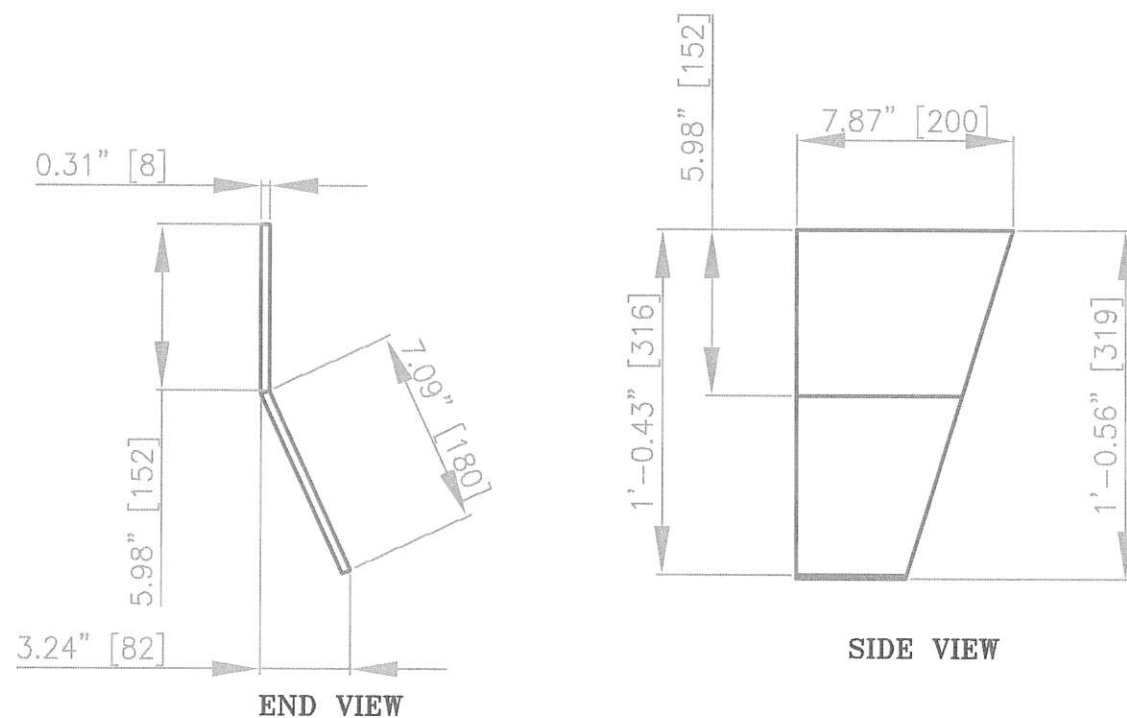
REVISION NO.		DESCRIPTION	DATE	BY:	McDUFFIE COAL TERMINAL SHIPLOADER 2 – EQUALIZER/TRUCK REPLACE.	 ALABAMA STATE PORT AUTHORITY			
REVISION NO.		DESCRIPTION	DATE	BY:					
REVISION NO.		DESCRIPTION	DATE	BY:					
REVISION NO.		DESCRIPTION	DATE	BY:					
REVISION NO.		DESCRIPTION	DATE	BY:	END TRUCK PLOW–PLAN SECTIONS	MOBILE ALABAMA			
REVISION NO.		DESCRIPTION	DATE	BY:					
REV 0		ISSUED FOR BID	02/03/21	TMA		SCALE: N/A DATE: 10-27-20	DRAWN BY: T.M.A. JOB NO.: MDSL2102020	CHECKED BY: DRAWING NAME: SL2TR-023	APPROVED BY: REVISION NO.: 0



HORIZONTAL STIFFENER
(2 REQUIRED, ONE EA.) C.S.



SIDE PLATE
(4 REQUIRED TOTAL, TWO EA.) C.S.



VERTICAL STIFFENERS
(4 REQUIRED, TWO EA. - ONE OPPOSITE HAND)

REVISION NO.	DESCRIPTION	DATE	BY:	McDUFFIE COAL TERMINAL SHIPLOADER 2 - EQUALIZER/TRUCK REPLACE. BUMPER EXTENSION-SIDE PLATE/STIFFENERS	 ALABAMA STATE PORT AUTHORITY <small>MOBILE ALABAMA</small>
REVISION NO.	DESCRIPTION	DATE	BY:		
REVISION NO.	DESCRIPTION	DATE	BY:		
REVISION NO.	DESCRIPTION	DATE	BY:		
REVISION NO.	DESCRIPTION	DATE	BY:		
REV 0	ISSUED FOR BID	02/03/21	TMA		
				SCALE: N/A	DRAWN BY: T.M.A.
				DATE: 10-27-20	CHECKED BY:
					APPROVED BY:
				JOB NO.: MDL2102020	DRAWING NAME: SL2TR-024
					REVISION NO.: 0