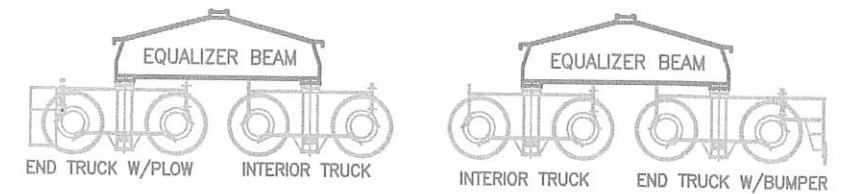
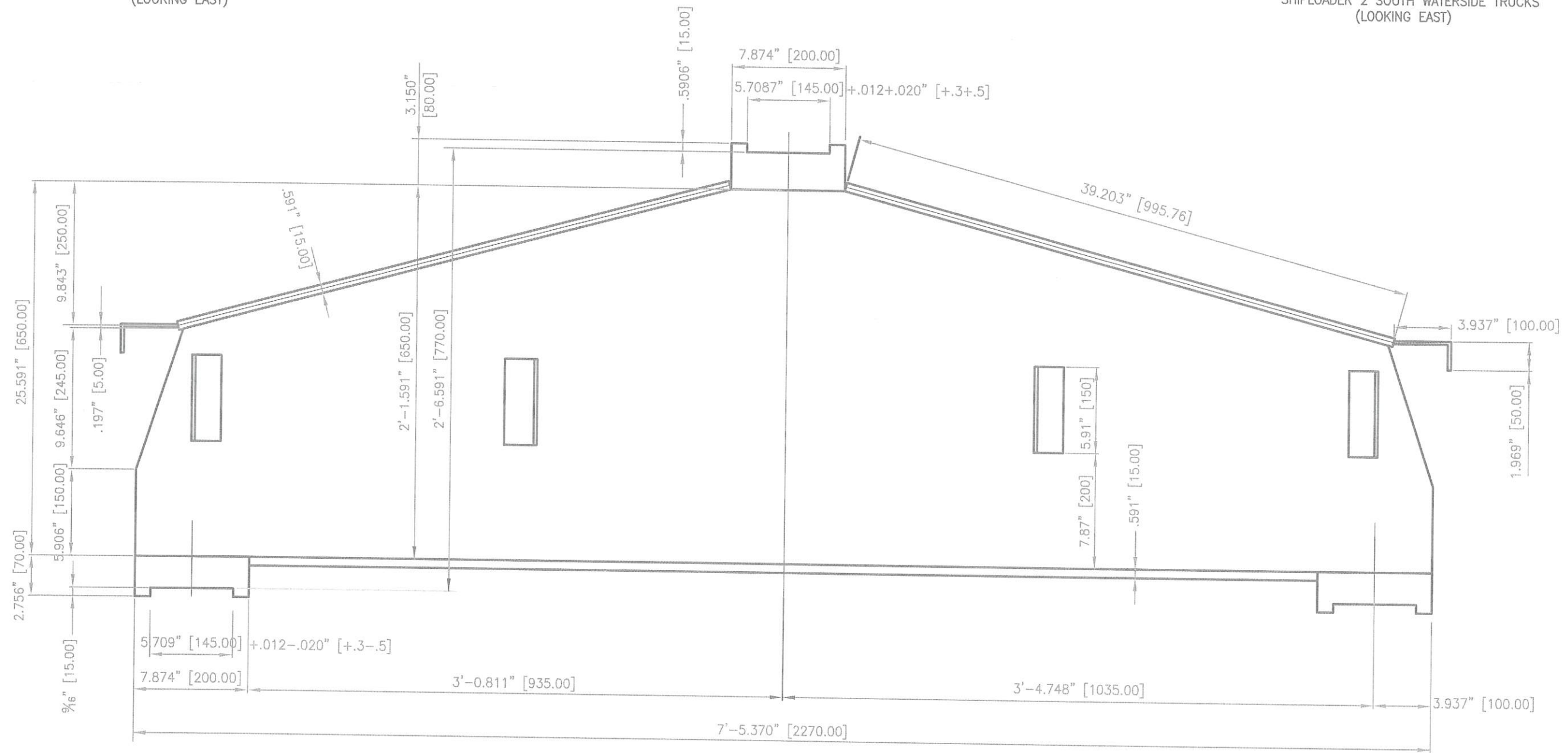


SHIPLOADER 2 NORTH WATERSIDE TRUCKS
(LOOKING EAST)



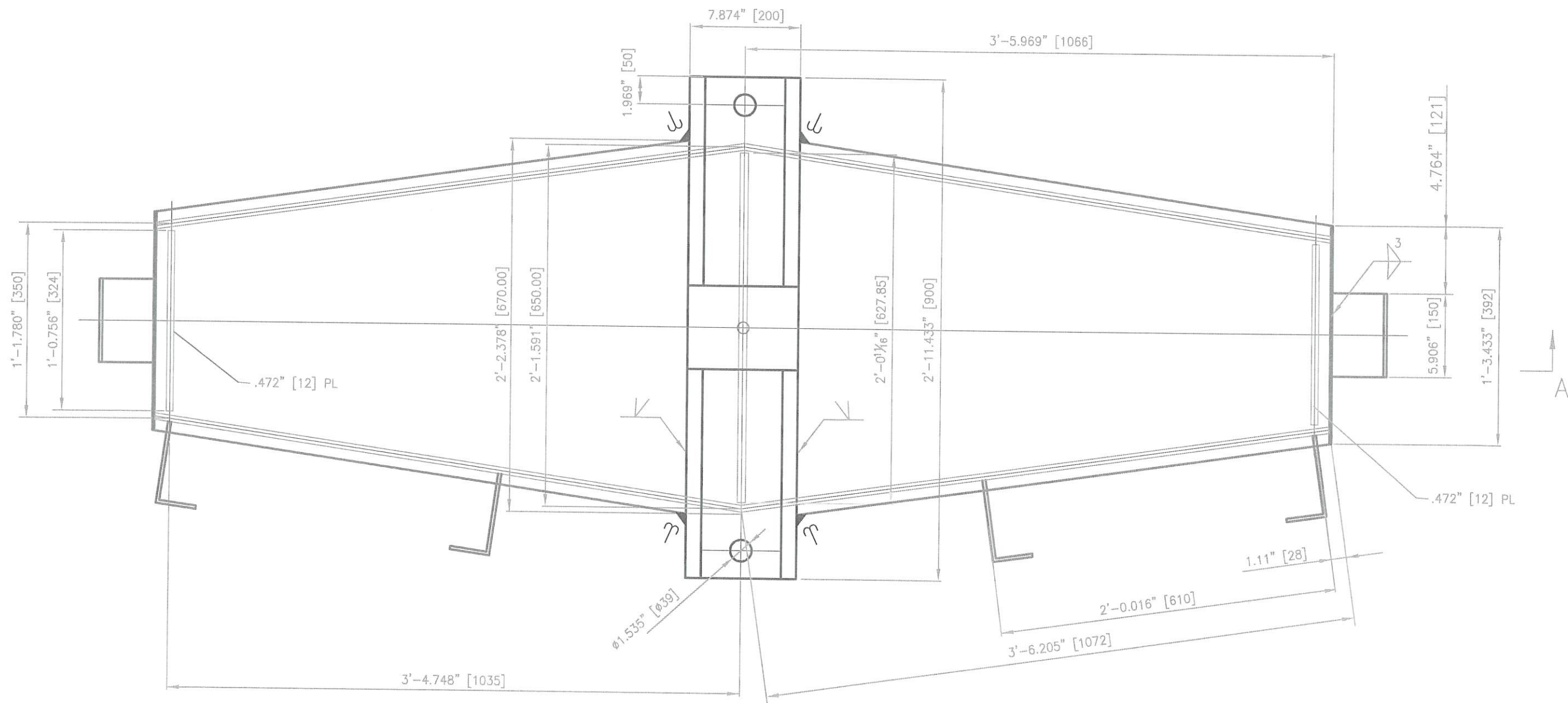
SHIPLOADER 2 SOUTH WATERSIDE TRUCKS
(LOOKING EAST)




EQUALIZER BEAM - ELEVATION
4-REQUIRED

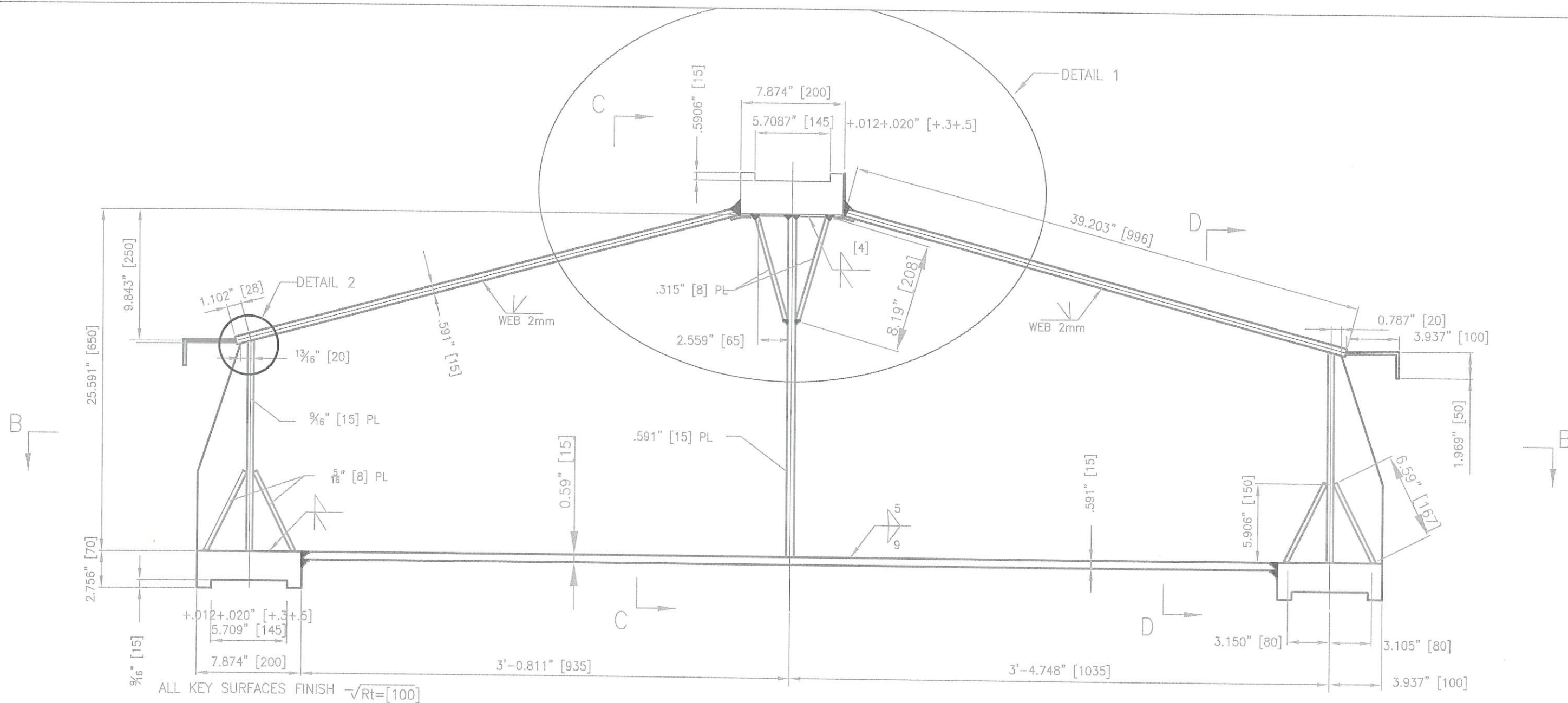
| REVISION NO. | DESCRIPTION | DATE | BY | McDUFFIE COAL TERMINAL SHIPLOADER 2 - EQUALIZER/TRUCK REPLACE. | | | |
|--------------|----------------|----------|-----|---|--|--|--|
| REVISION NO. | DESCRIPTION | DATE | BY | | | | |
| REVISION NO. | DESCRIPTION | DATE | BY | | | | |
| REVISION NO. | DESCRIPTION | DATE | BY | | | | |
| REV 0 | ISSUED FOR BID | 02/03/21 | TMA | TRUCK EQUALIZER BEAM - ELEV. | | | |

| | | | | | |
|--------|----------|-----------|-------------|---------------|-----------|
| SCALE: | N/A | DRAWN BY: | T.M.A. | CHECKED BY: | ATLANTA |
| DATE: | 12-08-20 | JOB NO.: | MDSL2102020 | DRAWING NAME: | SL2EB-001 |
| | | | | APPROVED BY: | 0 |

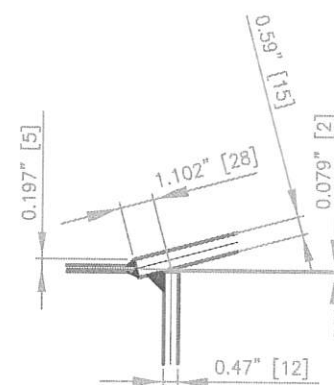


EQUALIZER BEAM - PLAN

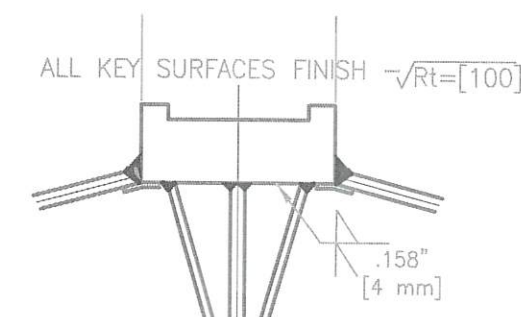
| | | | | | |
|--------------|----------------|----------|-----|---|--|
| REVISION NO. | DESCRIPTION | DATE | BY | McDUFFIE COAL TERMINAL SHIPLOADER 2 - EQUALIZER/TRUCK REPLACE. |  ALABAMA STATE PORT AUTHORITY |
| REVISION NO. | DESCRIPTION | DATE | BY | | |
| REVISION NO. | DESCRIPTION | DATE | BY | | |
| REVISION NO. | DESCRIPTION | DATE | BY | | |
| REVISION NO. | DESCRIPTION | DATE | BY | | |
| REV 0 | ISSUED FOR BID | 02/03/21 | TMA | TRUCK EQUALIZER BEAM - PLAN | <div> <div>MOBILE</div> <div>SCALE: N/A</div> <div>DATE: 12-08-20</div> </div> <div> <div>DRAWN BY: T.M.A.</div> <div>JOB NO.: MDL2102020</div> <div>DRAWING NAME: SL2EB-002</div> </div> <div> <div>CHECKED BY:</div> <div>APPROVED BY:</div> <div>REVISION NO.: 0</div> </div> |



SECTION "A=A"

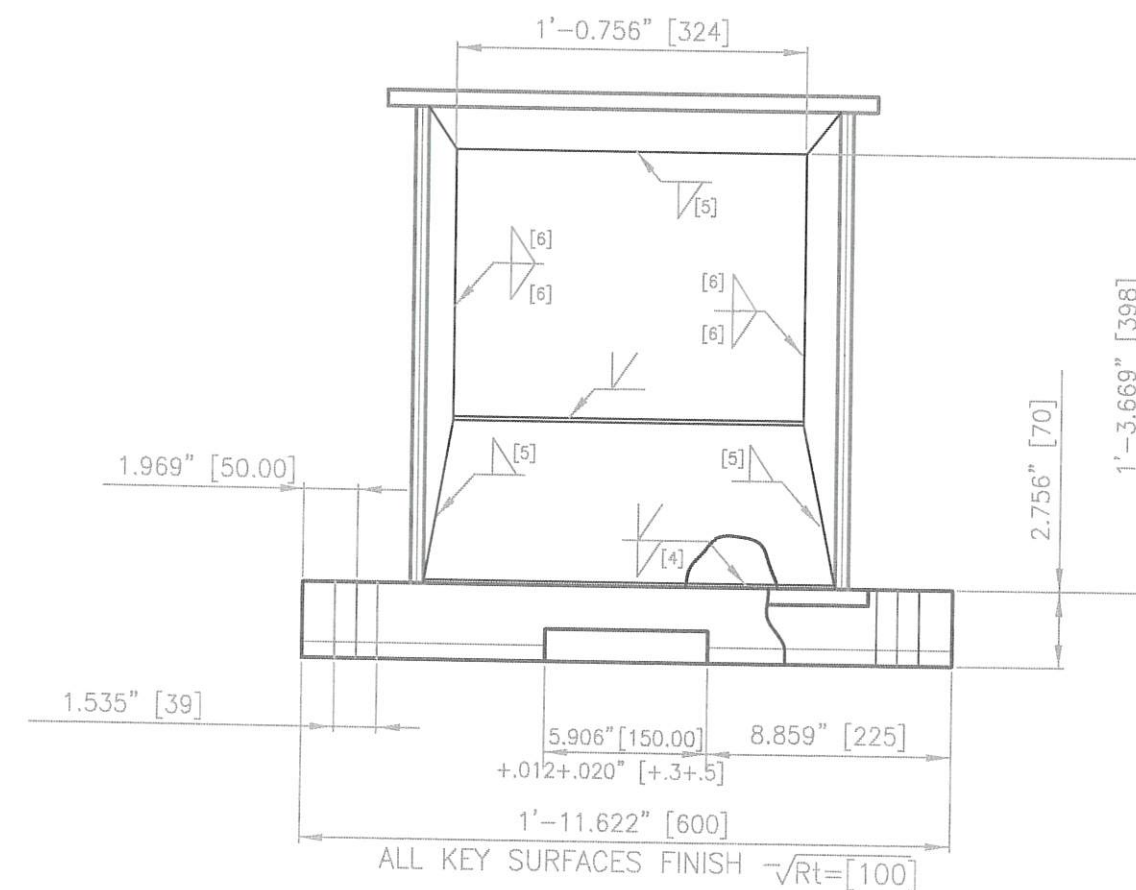
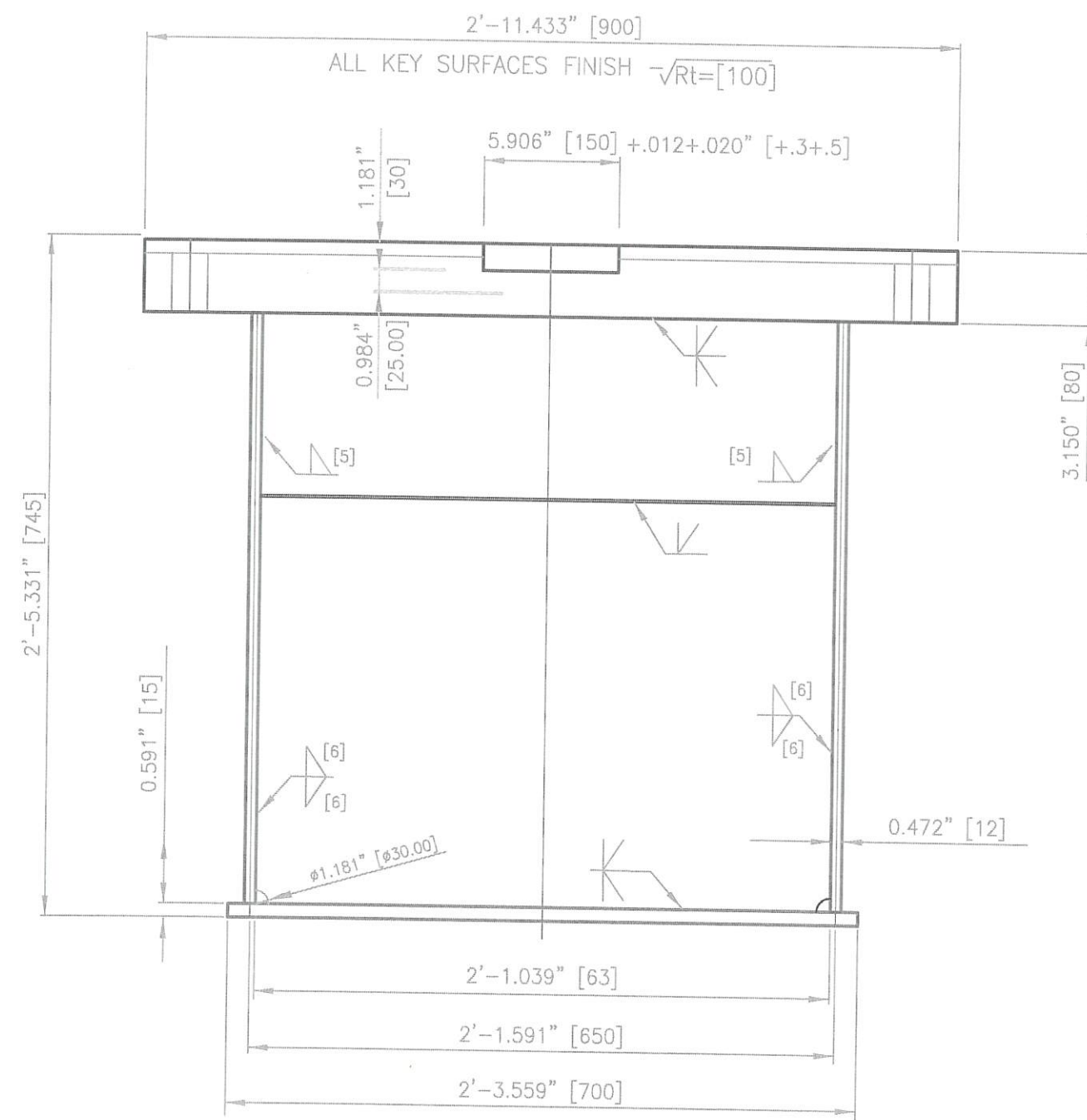



DETAIL 2



DETAIL 1

| REVISION NO. | DESCRIPTION | DATE | BY | McDUFFIE COAL TERMINAL SHIPLOADER 2 - EQUALIZER/TRUCK REPLACE. | | | | ALABAMA STATE PORT AUTHORITY | | | |
|--------------|-----------------|----------|-----|---|----------|-----------|-------------|---------------------------------|-----------|---------------|---|
| REVISION NO. | DESCRIPTION | DATE | BY | | | | | | | | |
| REVISION NO. | DESCRIPTION | DATE | BY | | | | | | | | |
| REVISION NO. | DESCRIPTION | DATE | BY | | | | | | | | |
| REV 0 | ISSUED FOR IBID | 02/03/21 | TMA | TRUCK EQUALIZER BEAM ELEV .SECTION | | | | | | | |
| | | | | SCALE: | N/A | DRAWN BY: | T.M.A. | CHECKED BY: | | APPROVED BY: | |
| | | | | DATE: | 12-08-21 | JOB NO.: | MDSL2102020 | DRAWING NAME: | SL2EB-003 | REVISION NO.: | 0 |



| | | | | | | | | | |
|--------------|-----------------|----------|-----|---|---|-------------------------|--------|-------------|----------|
| REVISION NO. | DESCRIPTION | DATE | BY: | McDUFFIE COAL TERMINAL SHIPLOADER 2 – EQUALIZER/TRUCK REPLACE. |  ALABAMA STATE PORT AUTHORITY | ALABAMA | | | |
| REVISION NO. | DESCRIPTION | DATE | BY: | | | MOBILE N/A T.M.A. | T.M.A. | CHECKED BY: | APPROVED |
| REVISION NO. | DESCRIPTION | DATE | BY: | | | | | | |
| REVISION NO. | DESCRIPTION | DATE | BY: | | | | | | |
| REVISION NO. | DESCRIPTION | DATE | BY: | | | | | | |
| REVISION NO. | DESCRIPTION | DATE | BY: | TRUCK EQUALIZER BEAM SECTIONS | | | | | |
| REV 0 | ISSUED FOR IBID | 02/03/21 | TMA | | | | | | |