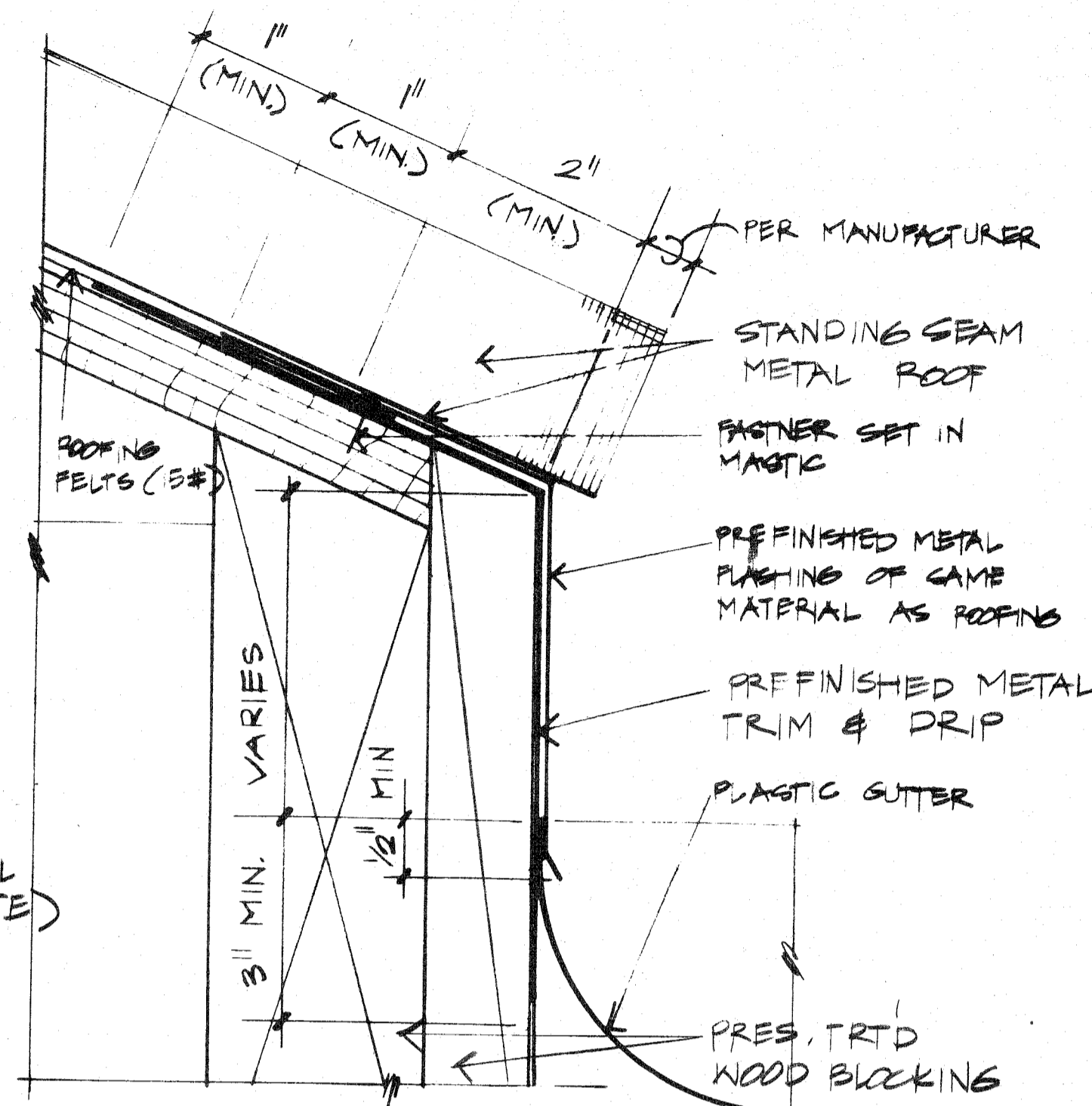
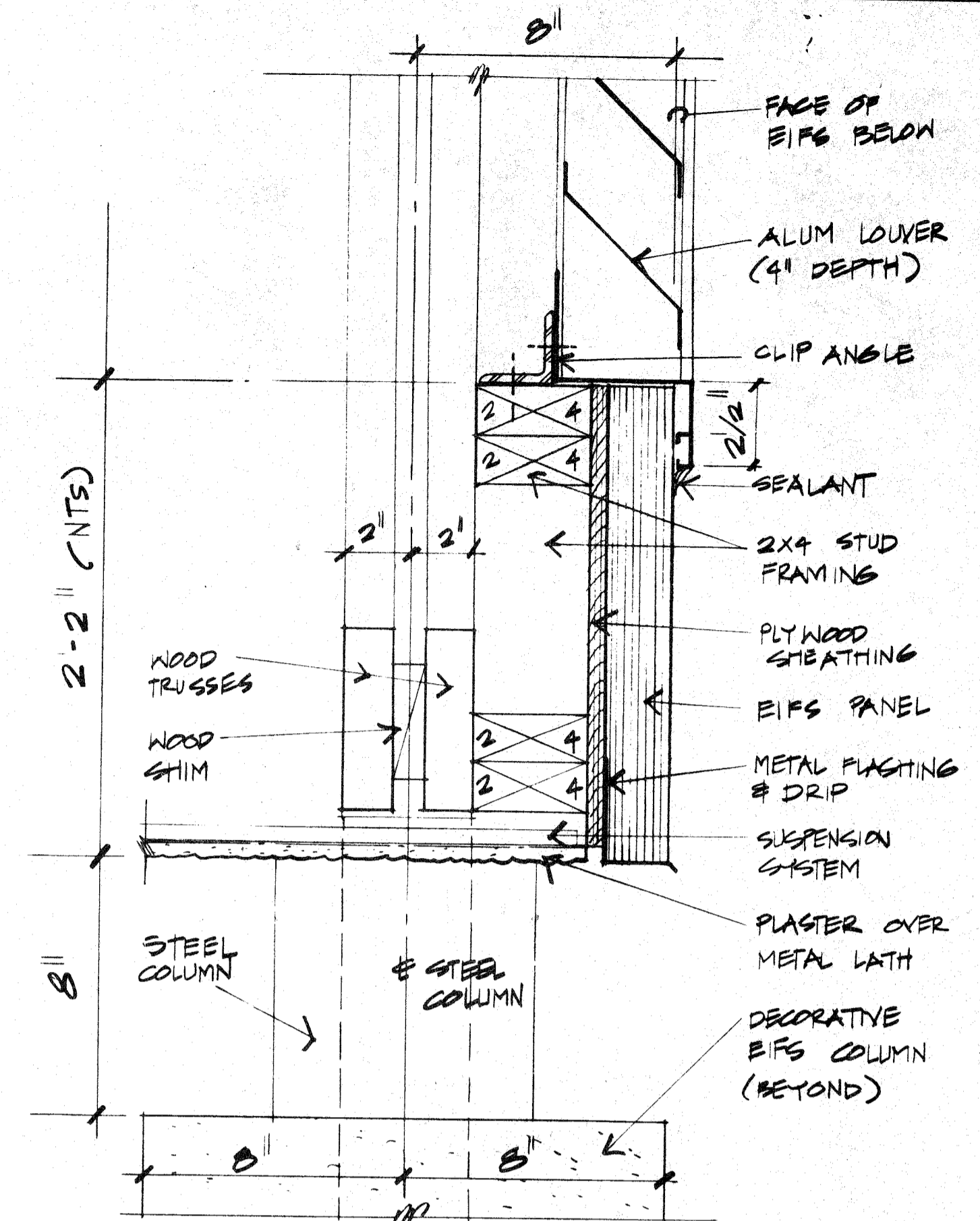


1 TYPICAL EAVE DETAIL
 A3.2 A4.3 3" = 1'-0"

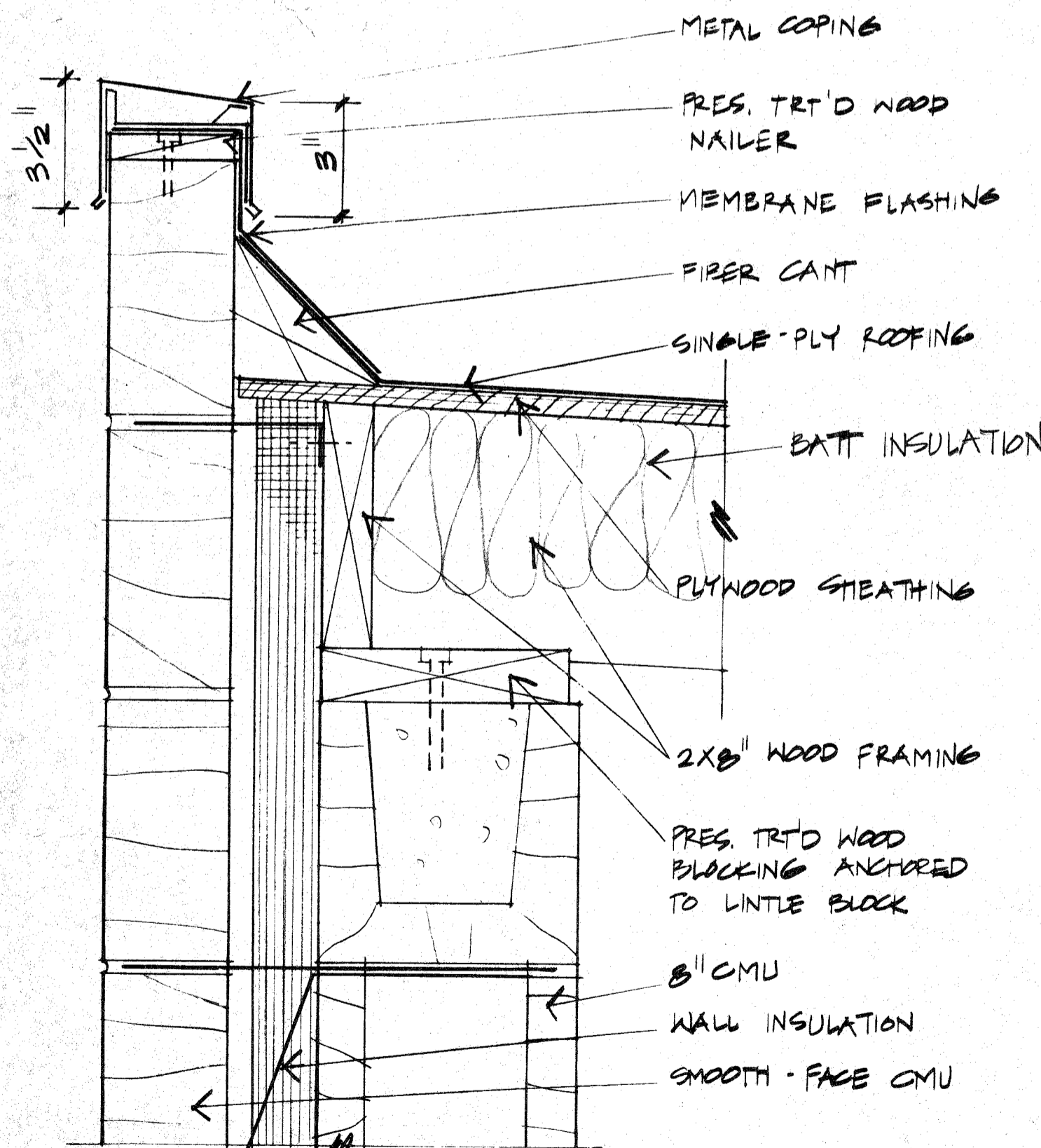
NOTE: PREFORATIONS ONLY OCCUR IN 2 1/2" RECESSED SECTION



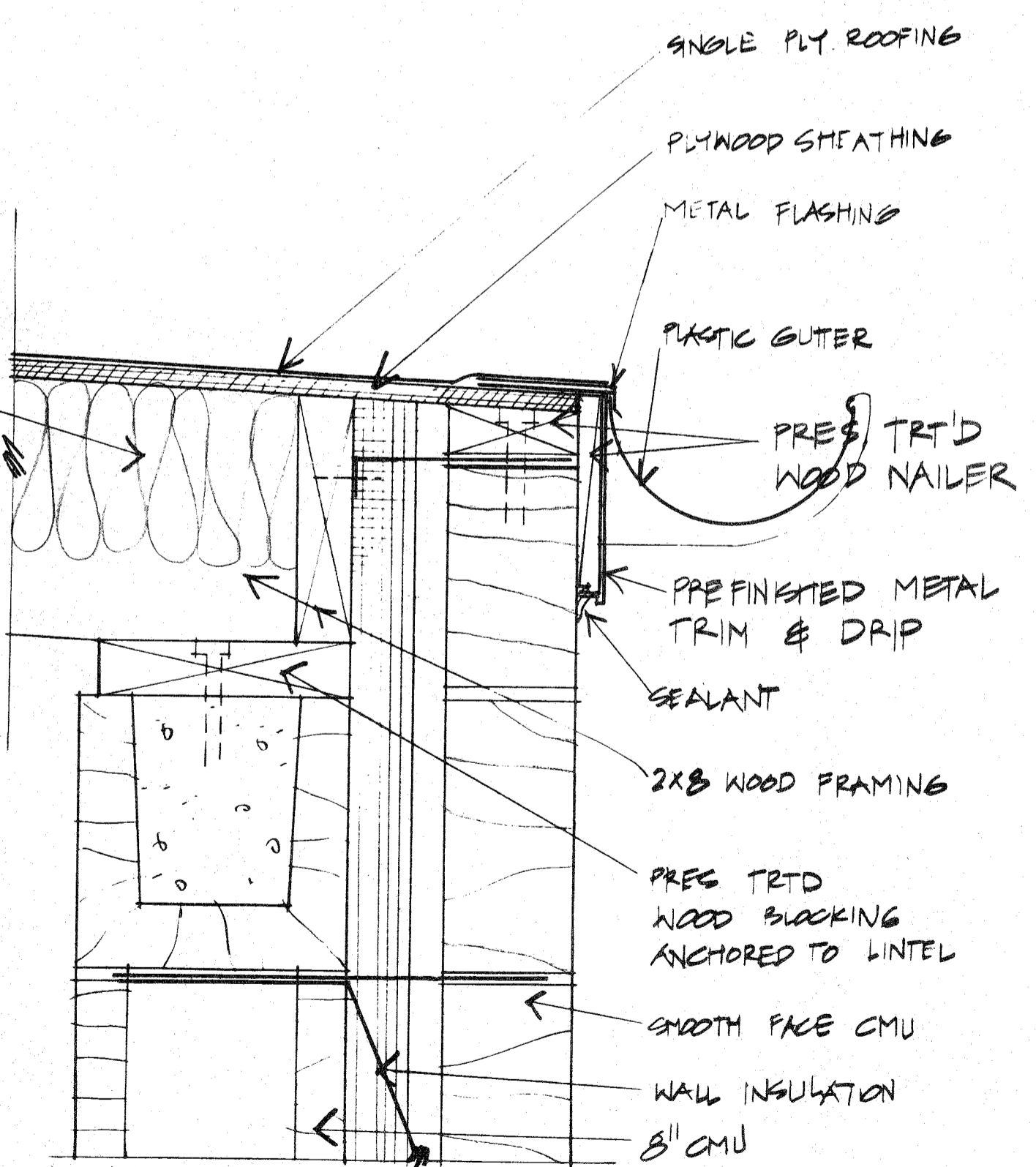
2 FLASHING DETAIL
 A4.3 A4.3 FULL SIZE (1" = 1")



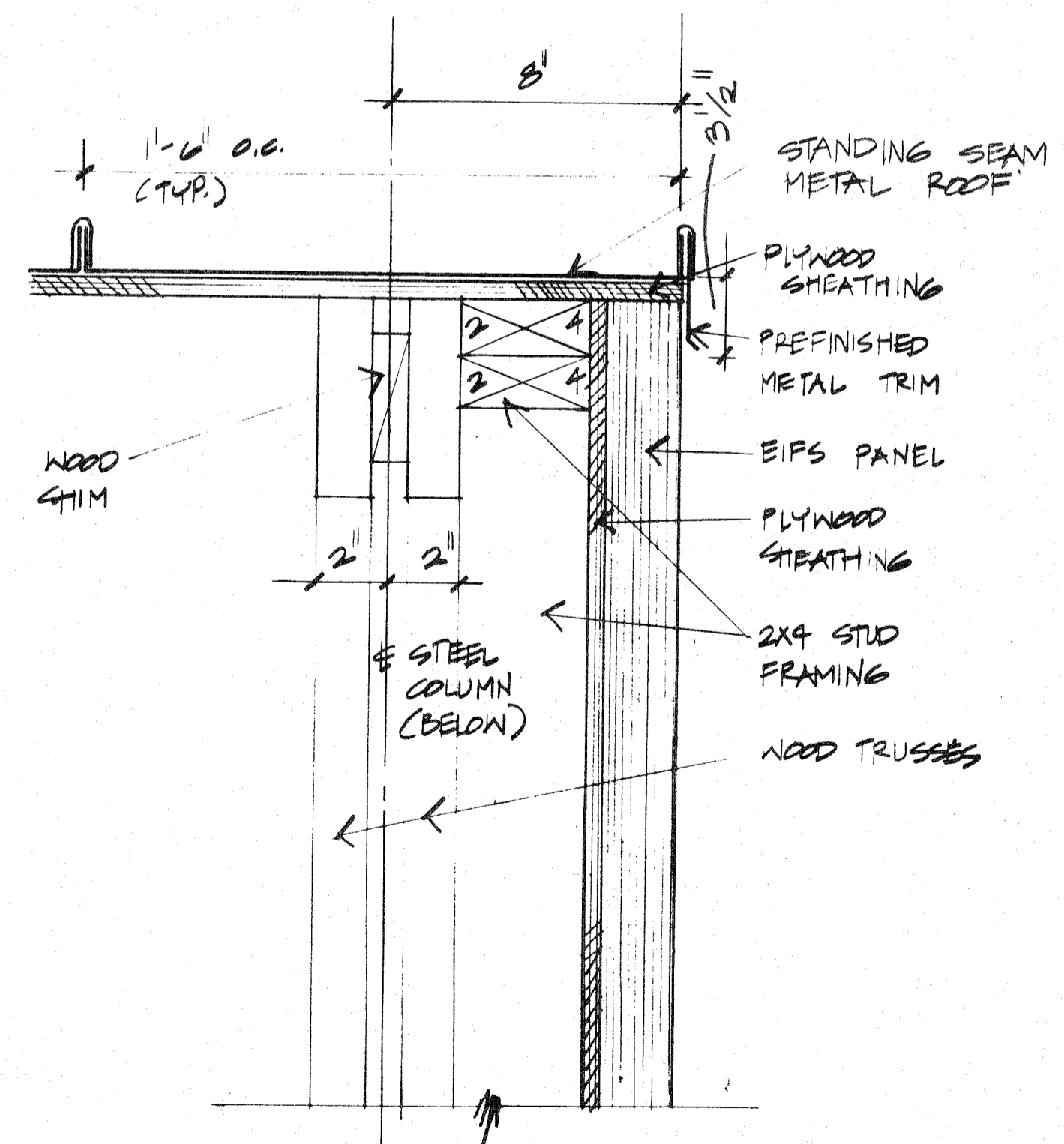
3 FASCIA DETAIL
 A3.2 A4.3 3" = 1'-0"



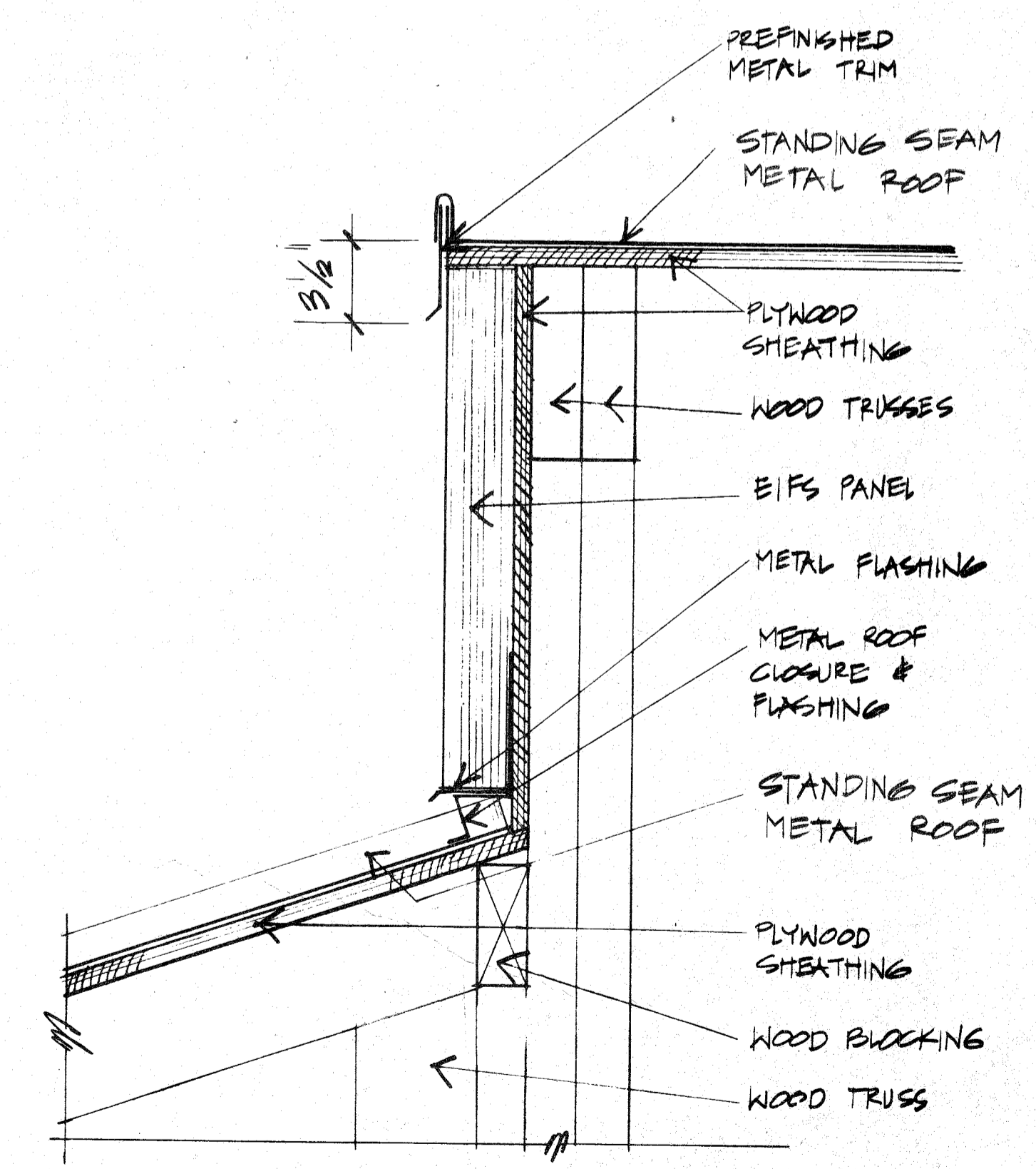
4 ROOF DETAIL
 A3.1 A4.3 3" = 1'-0"



5 ROOF DETAIL
 A3.1 A4.3 3" = 1'-0"



6 ROOF/EIFS DETAIL
 A3.2 A4.3 3" = 1'-0"



7 ROOF DETAIL
 A3.2 A4.3 3" = 1'-0"

HEERY
 ALABAMA
 LEFEVRE OR JARRELL
 MILAM
 SUPPLY
 ASHLOCK
 9/23/88

REV. DESCRIPTION PREP BY DATE APPROV

MOBILE, ALABAMA
 SOUTHERN DIVISION
 CHARLESTON, S.C.
 SECURITY BUILDING
 DETAILS

DEPARTMENT OF THE NAVY
 NAVAL STATION
 NAVAL FACILITIES ENGINEERING COMPANY
 MOBILE, ALABAMA
 DATE 9/30/88
 EFD FOR COMMANDER, NAVFAC APPROVED
 APPROVED BY P.E.

SEAL AREA
 ALABAMA
 REGISTERED PROFESSIONAL ENGINEER
 B. J. PETERSON

RECORD DRAWING DATE
 CODE NO. 80091
 DRAWING SIZE: D
 SPEC. NO. 06-88-0031
 CONSTR. CONTR. NO. N62467-88-C-0031
 NAVFAC DRAWING NO. 5193843
 SHEET 27 OF 56

A4.3