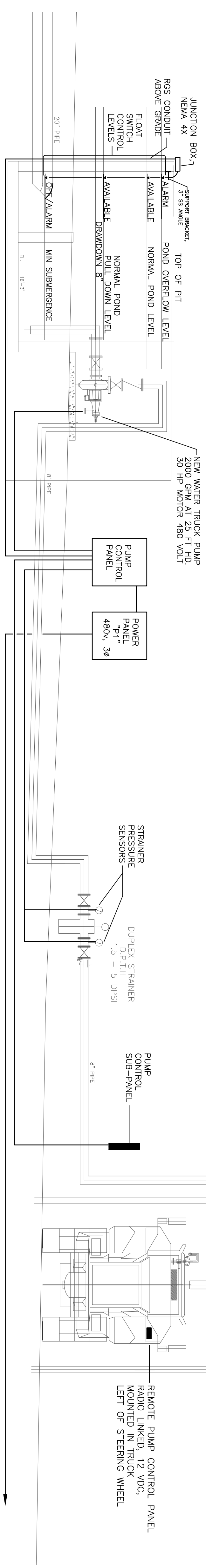


DUCTBANK NOTES:

1. EMPTY MAIN DUCTBANK WITH PULLBOXES AND PULLCORDS FROM ELECTRICAL BUILDING TO PULLBOX NEAR MAIN PUMP CONTROL PANEL AND PANEL "P1" INSTALLED BY OTHERS.
2. FINAL COMPLETE EXTENSION OF RGS CONDUIT RACEWAY(S) TO EQUIPMENT IN ELECTRICAL BUILDING AND TO NEW POWER PANEL SHALL BE PROVIDED AND INSTALLED UNDER THIS CONTRACT.
3. THESE DUCTBANK DETAILS PROVIDED FOR INFORMATION PURPOSES.
4. PLACE SPACERS AT 5'-0" O.C. OR LESS FULL LENGTH OF DUCTBANK.
5. SPACERS SHALL BE ANCHORED TO HOLD IN PLACE WHILE CONCRETE BACKFILLING.
6. ELECTRICAL DUCT BANK CONCRETE SHALL 5000 PSI AND BE DYED RED.
7. ALL PVC CONDUIT SHALL BE SCHEDULE 40 TYPE EB UL APPROVED.
8. ASPA PM SHALL WITNESS CONCRETE POURS WITH ADVANCE PRIOR NOTICE.
9. DUCTBANK GROUND CONDUCTOR SHALL BE EXOTHERMICALLY BONDED AT PULLBOXES.
6. TAMP UNDER DUCTBANK AND INSTALL #57 STONE BASE 12" THICK.
7. CONDUITS SHALL BE SLOPED TO PULLBOXES FOR DRAINAGE.

- NOTES:**
1. JUNCTION BOX AND FLOAT SWITCHES MAY BE MOUNTED ON EAST OR WEST SIDE OF PIT.
 2. INSTALL FLOAT SWITCH LEVELS INDICATED ON MECHANICAL DRAWINGS.



- NOTES:**
1. PUMP CONTROL PANEL BASIC COMPONENTS:
 SELECTOR - PUMP START/STOP
 INDICATOR - PUMP RUN MODE
 INDICATOR - PUMP LOW LEVEL SHUTOFF
 INDICATOR - STRAINER HIGH PRESSURE SHUT OFF
 INDICATOR - PUMP LOW LEVEL
 SWITCH - AREA LIGHTS ON-OFF
 SEE SPECIFICATIONS

2. PUMP CONTROL SUB-PANEL BASIC COMPONENTS:
 SELECTOR - PUMP START/STOP
 INDICATOR - PUMP RUN MODE
 INDICATOR - PUMP LOW LEVEL SHUTOFF
 INDICATOR - STRAINER HIGH PRESSURE SHUT OFF
 INDICATOR - PUMP LOW LEVEL
 SWITCH - AREA LIGHTS ON-OFF
 SEE SPECIFICATIONS

3. REMOTE PUMP CONTROL PANEL:
 REMOTE PUMP CONTROL PANEL MOUNTED IN TRUCK LEFT OF STEERING WHEEL
 SELECTOR - PUMP START / STOP
 INDICATOR - PUMP RUN MODE
 INDICATOR - PUMP LOW LEVEL SHUTOFF
 INDICATOR - STRAINER HIGH PRESS SHUTOFF
 SWITCH - AREA LIGHTS ON-OFF
 SEE SPECIFICATIONS
4. SEE CIVIL, STRUCTURAL, AND MECHANICAL PLANS AND SPECS FOR ADDITIONAL INFORMATION AND REQUIREMENTS.
5. CONTRACTOR SHALL PROVIDE AND INSTALL ALL COMPONENTS AND APPURTENANCES REQUIRED TO BE FULLY FUNCTIONAL INCLUDING CONTROLS AS INDICATED AND INCLUDE ALL COSTS IN BID WHETHER INDICATED OR NOT.
6. EMPTY DUCTBANK WITH PULLBOXES AND PULLCORDS INSTALLED BY OTHERS.
7. REQUESTS FOR INFORMATION (RFIS) SHALL BE SUBMITTED DURING THE PRE-BID PROCESS FOR CLARIFICATION TO ASSURE THAT ALL SYSTEMS ARE COMPLETELY FUNCTIONAL AND INCLUDED IN THE BID PRICE.

CONTROL SCHEMATIC DIAGRAM
SCALE: NONE

WHEN THIS DRAWING IS REPRODUCED AT A SCALE OTHER THAN 1" = 1" INCH SCALE THIS BAR = 1" INCH

EXISTING UNDERGROUND UTILITIES ARE SHOWN AT APPROXIMATE LOCATIONS. CONTRACTOR SHALL DETERMINE THE EXACT LOCATION OF ALL UTILITIES AND BE RESPONSIBLE FOR ANY DAMAGE TO UTILITIES THAT RESULT FROM HIS FAILURE TO EXACTLY LOCATE AND MARK ALL UTILITIES.

REV NO.	DATE	BY	REVISION

DRAWN BY: **ALABAMA STATE DOCKS**
 MOBILE, ALABAMA
 SCALE: AS INDICATED
 DRAWING NO.: **E3**

DWG. BY:	DATE:	REVISIONS:	SCALE:
CHD. BY:	DATE:	BY:	DATE: