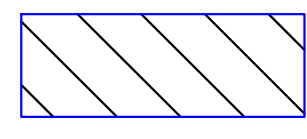


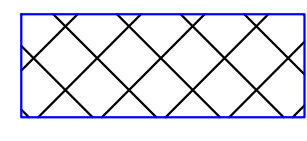
PROPOSED JOINT NOTATION
SEE SECTIONS & DETAILS SHEET
10524-02 (TYP.)

PROPOSED JOINT NOTATION
SEE SECTIONS & DETAILS SHEET
10524-02 (TYP.)

EXP. JOINT (TYP.)


LEGEND:

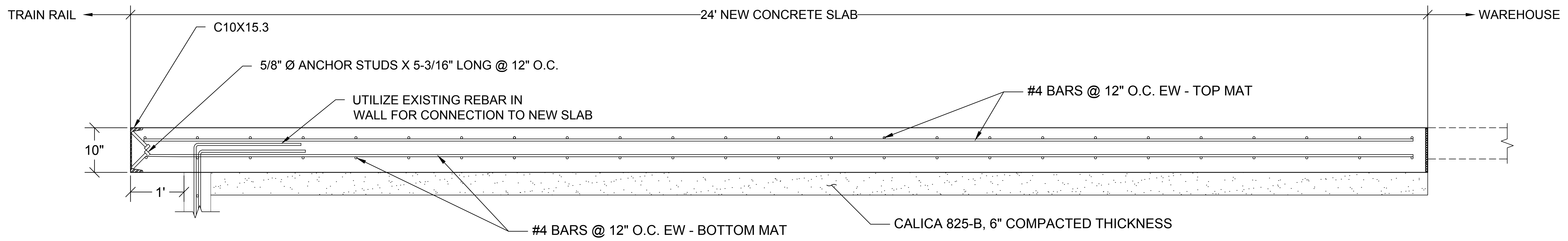
 NEW 10" SLAB (AREA 1)

 NEW 10" SLAB (AREA 2)

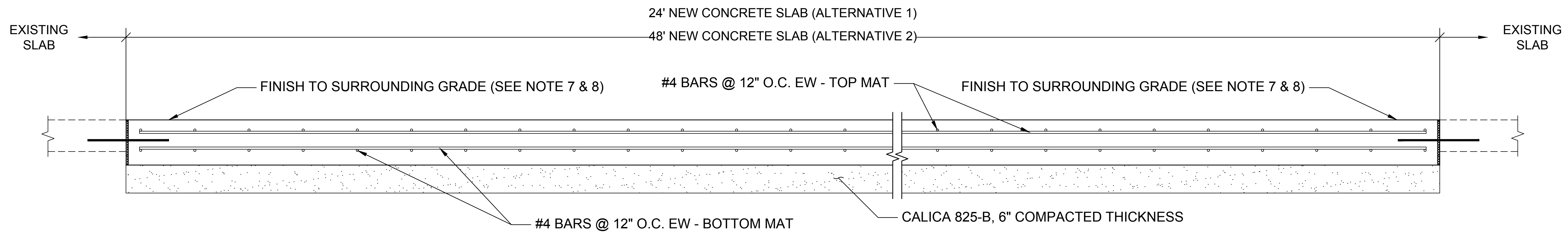
BERTH 7 WAREHOUSE-CONCRETE REPAIR

3/4"=1'-0"

REV NO.	DATE	BY	REVISION
 ALABAMA STATE DOCKS MOBILE, ALABAMA			
GENERAL CARGO/INTERMODAL CONCRETE REFURBISHMENT PIER 7 - PLAN VIEW			
DWG BY:	DATE:	REVISIONS	SCALE:
CHKD. BY:	DATE:	BY: DATE: BY: DATE: BY: DATE:	3/4"=1'-0" (24"x36")
DRAWING NO.:			10524-01

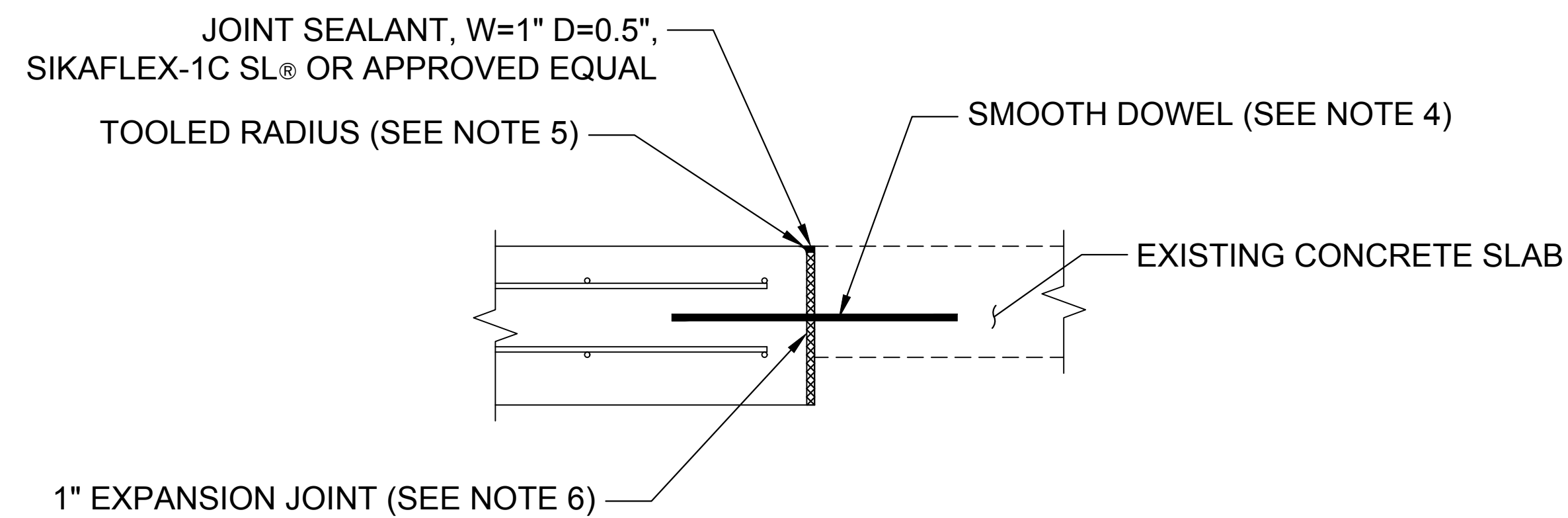


SECTION A-A
1"=1'-0"

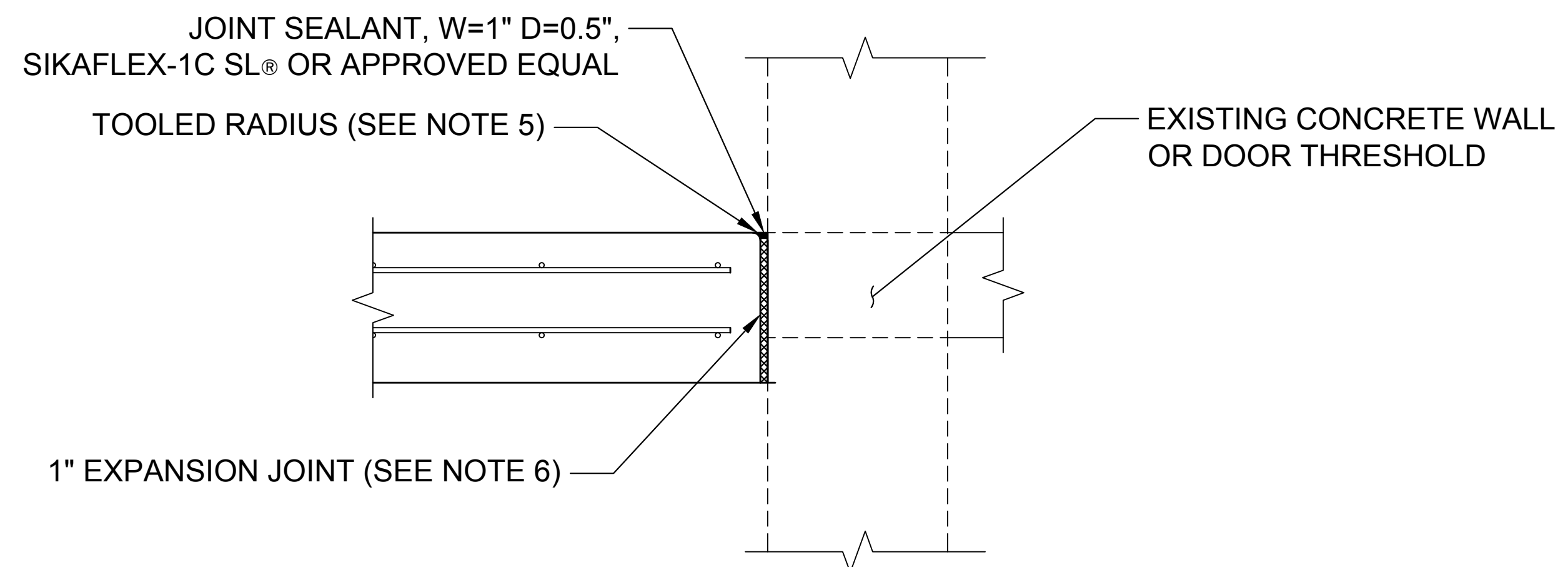


SECTION B-B
1"=1'-0"

NOTE: IF BID ALTERNATIVE 2 IS SELECTED ADD E.J. AT LOCATION SHOWN ON PLAN VIEW



TYP. DOWELED EXPANSION JOIN (D.E.J)
1-1/2"=1'-0"



TYP. EXPANSION JOIN (E.J)
1-1/2"=1'-0"

NOTES:

1. CONCRETE SHALL HAVE A 7 DAY COMPRESSIVE STRENGTH OF 4,000 PSI, 28 DAY COMPRESSIVE STRENGTH OF 5,000 PSI WITH A W/C RATIO OF 0.4, MAX SLUMP OF 4 IN. ± 2 IN. TESTING OF CONCRETE PROPERTIES BY CONTRACTOR.
2. REINFORCEMENT STEEL SHALL HAVE A YIELD STRESS OF 60 KSI.
3. COVER HEIGHT TO BE MINIMUM 2" ON TOP MAT AND 3" ON BOTTOM MAT.
4. DOWELS - 1"Ø 18" LONG SMOOTH DOWELS @ 12" O.C. ADHERED INTO EXISTING CONCRETE, MIN. 9", WITH REDHEAD® C6+ EPOXY OR APPROVED EQUAL.
5. NOTED CORNERS TO BE TOOLED TO A 1/2" RADIUS.
6. EXPANSION JOINT MATERIAL SHALL NOT BE COMPOSED OF ASPHALT.
7. GRADE OF SLAB SHALL MATCH THE GRADE OF ADJACENT SLABS REGARDLESS OF EXISTING GRADE.
8. NEW CONCRETE SLABS SHALL HAVE A MEDIUM "BROOMED FINISH".

REV NO.	DATE	BY	REVISION
ALABAMA STATE DOCKS MOBILE, ALABAMA			
GENERAL CARGO/INTERMODAL CONCRETE REFURBISHMENT PIER 7 - SECTIONS & DETAILS			
DWG BY:	DATE:	REVISIONS	SCALE:
CHKD. BY:	DATE:	BY: DATE: BY: DATE: BY: DATE:	AS SHOWN (24"x36")
DRAWING NO.:			10524-02