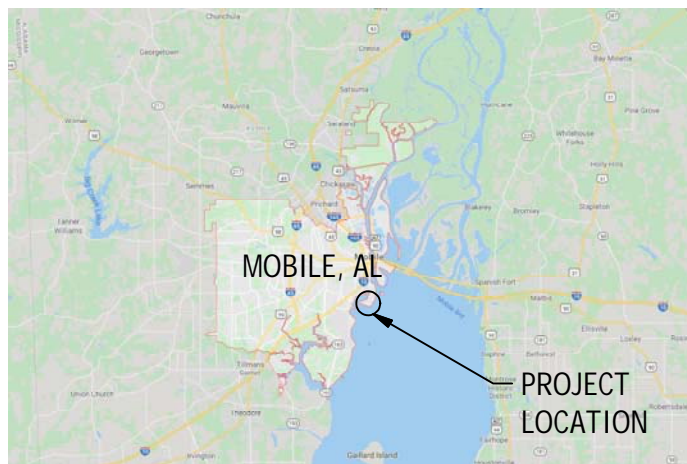
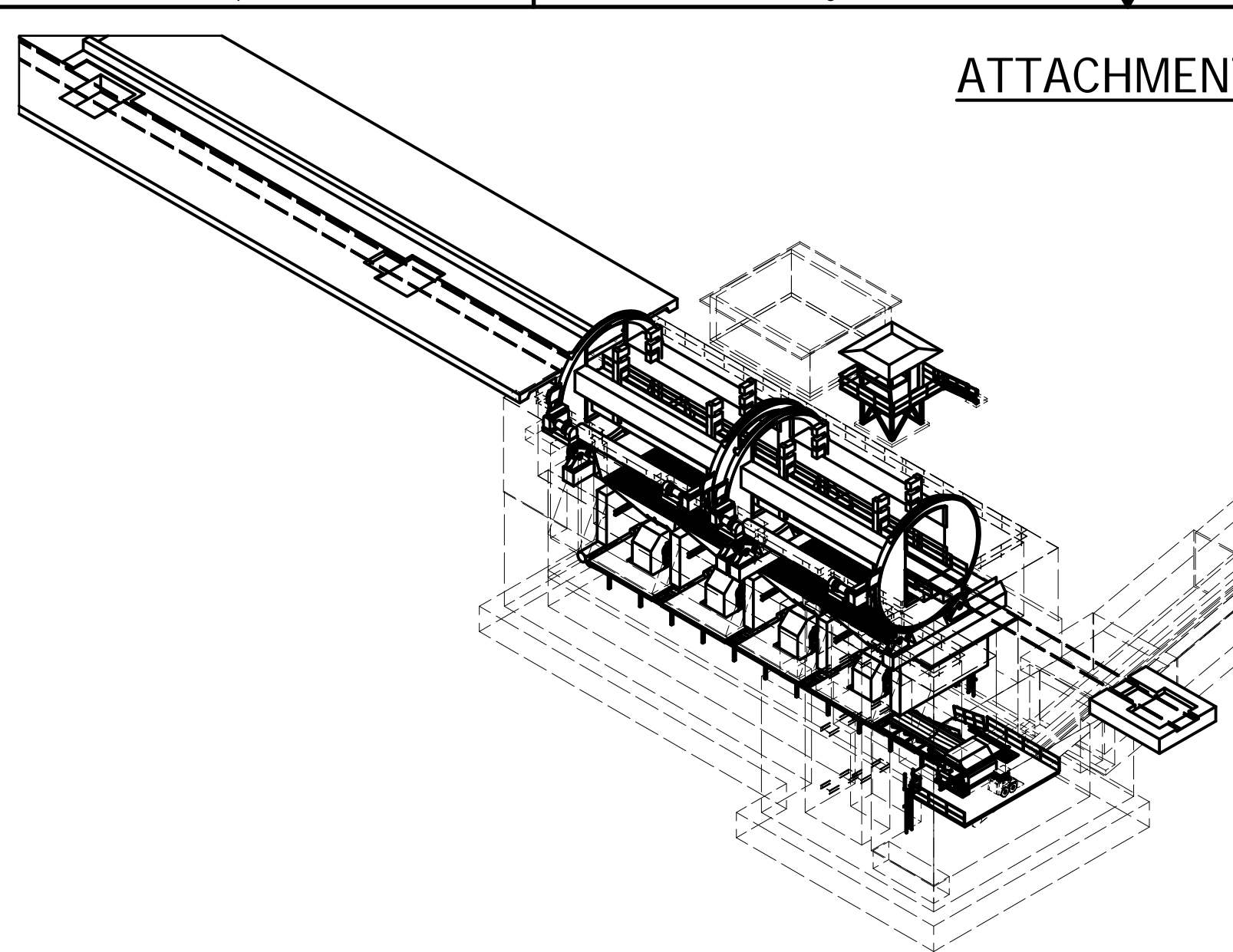


ATTACHMENT 1

ALABAMA STATE PORT AUTHORITY
 MOBILE, ALABAMA
 MCDUFFIE TERMINALS
 MATERIAL HANDLING FACILITY

ROTARY CAR DUMPER NO.2 (RCD2)
 AND TAKE-AWAY SYSTEM
 REPLACEMENT PROJECT

CONCEPTUAL DRAWING PACKAGE°



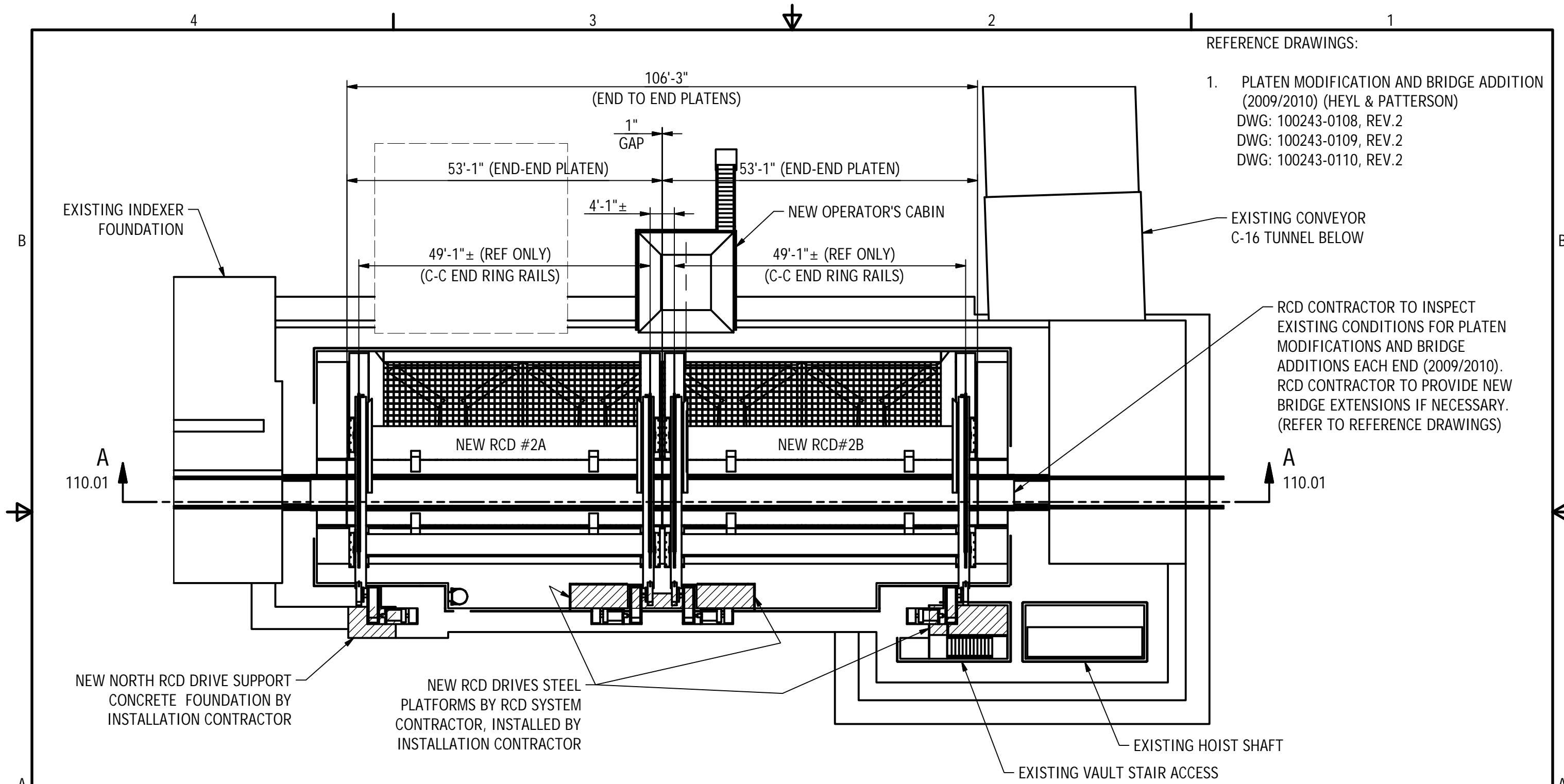
VICINITY MAP



LOCATION MAP

DRAWING LIST	
NO.	DRAWING NAME
100.00	TITLE SHEET
101.01	GENERAL ARRANGEMENT, PLAN VIEW
101.02	PLAN VIEW AT APRON FEEDER FLOOR LEVEL
101.03	PLAN VIEW AT COLLECTION CONVEYOR FLOOR LEVEL
110.01	GENERAL ARRANGEMENT, SECTION VIEWS
200.01	END RING ELEVATION
300.01	TAKE-AWAY SYSTEM DETAILS, HOPPER / APRON FEEDER GA
300.02	TAKE-AWAY SYSTEM DETAILS, COLLECTION CONVEYOR GA
300.03	TAKE-AWAY SYSTEM DETAILS, VAULT SECTION
400.01	PLAN, EXISTING INDEXER & WHEEL CLAMPS


REV	DATE	BY	DESCRIPTION
0	2020-06-04	GJD	ISSUED FOR BID
REVISION HISTORY			



- REFERENCE DRAWINGS:
1. PLATEN MODIFICATION AND BRIDGE ADDITION (2009/2010) (HEYL & PATTERSON)
 DWG: 100243-0108, REV.2
 DWG: 100243-0109, REV.2
 DWG: 100243-0110, REV.2

RCD CONTRACTOR TO INSPECT EXISTING CONDITIONS FOR PLATEN MODIFICATIONS AND BRIDGE ADDITIONS EACH END (2009/2010). RCD CONTRACTOR TO PROVIDE NEW BRIDGE EXTENSIONS IF NECESSARY. (REFER TO REFERENCE DRAWINGS)

PLAN
 T.O. CONC. VAULT ELEV. +22.0'

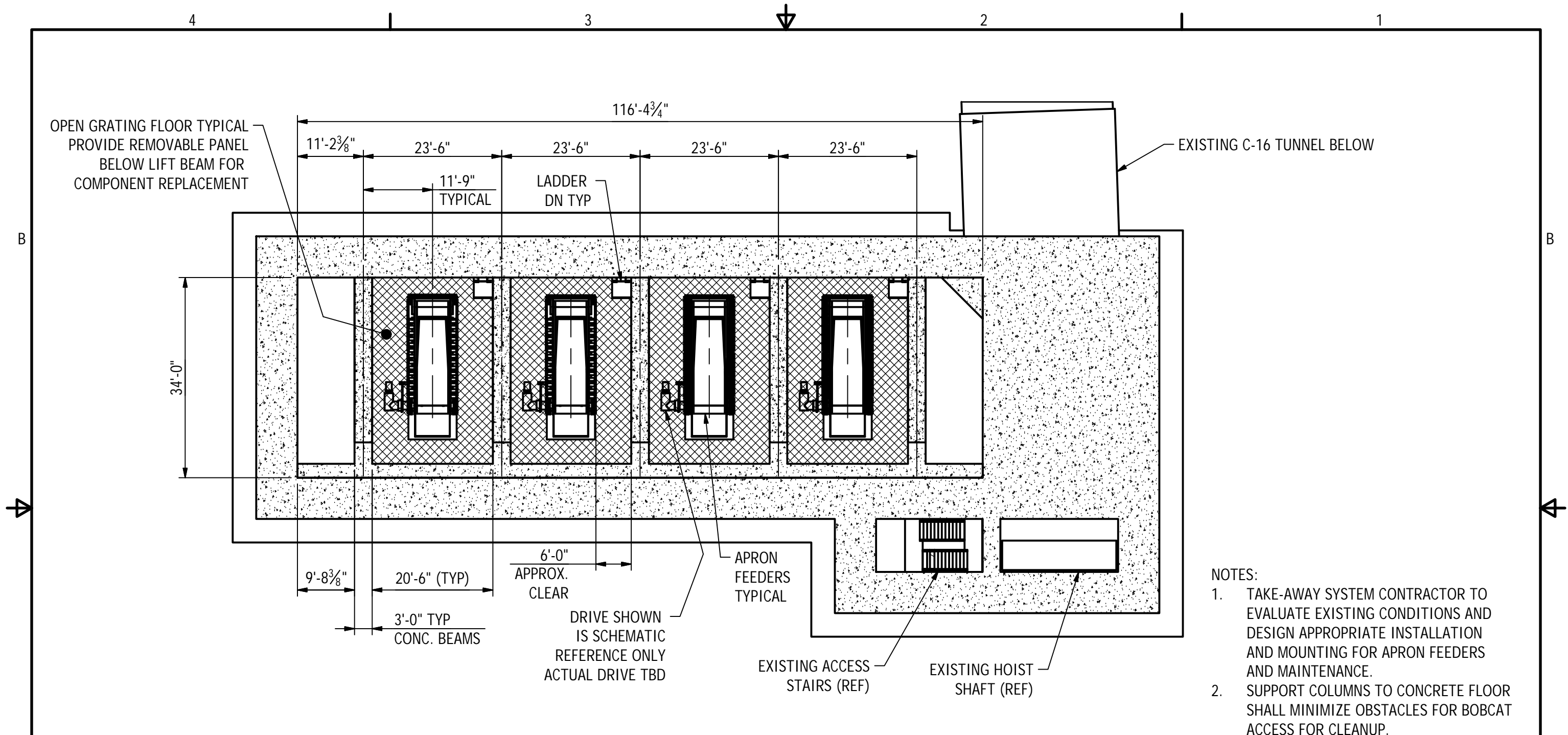
SCALE: 1:200 UNLESS NOTED OTHERWISE	DIMENSIONS ARE IN INCHES DO NOT SCALE DRAWING	DRAWN BY GJD	STATUS CONCEPTUAL
 A&S Technical Services <small>A & S TECHNICAL SERVICES</small>		CHECKED WFA	CREATED 2020-04-14
		APPROVED ASPA	PROJECT A218-03
SIZE B	DRAWING NO. 101.01	REV/N 0	

Alabama State Port Authority
 ASPA RCD2 REPLACEMENT, Mobile, AL

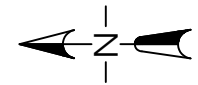
**GENERAL ARRANGEMENT
 PLAN VIEW**

REV	DATE	BY	DESCRIPTION
0	2020-06-04	GJD	ISSUED FOR BID

REVISION HISTORY



- NOTES:
1. TAKE-AWAY SYSTEM CONTRACTOR TO EVALUATE EXISTING CONDITIONS AND DESIGN APPROPRIATE INSTALLATION AND MOUNTING FOR APRON FEEDERS AND MAINTENANCE.
 2. SUPPORT COLUMNS TO CONCRETE FLOOR SHALL MINIMIZE OBSTACLES FOR BOBCAT ACCESS FOR CLEANUP.
 3. INSTALLATION CONTRACTOR TO SUPPLY AND INSTALL ANCHOR BOLTS AND INSTALL EQUIPMENT AND STRUCTURES AS DIRECTED BY TAKE-AWAY SYSTEM CONTRACTOR DESIGN



PLAN AT APRON FEEDERS
 ELEV. -16.0'
 (UNDERSIDE CONCRETE BEAMS)

REV	DATE	BY	DESCRIPTION
0	2020-06-04	GJD	ISSUED FOR BID
REVISION HISTORY			

SCALE: 1:200
 UNLESS NOTED OTHERWISE

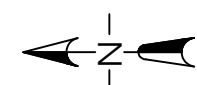
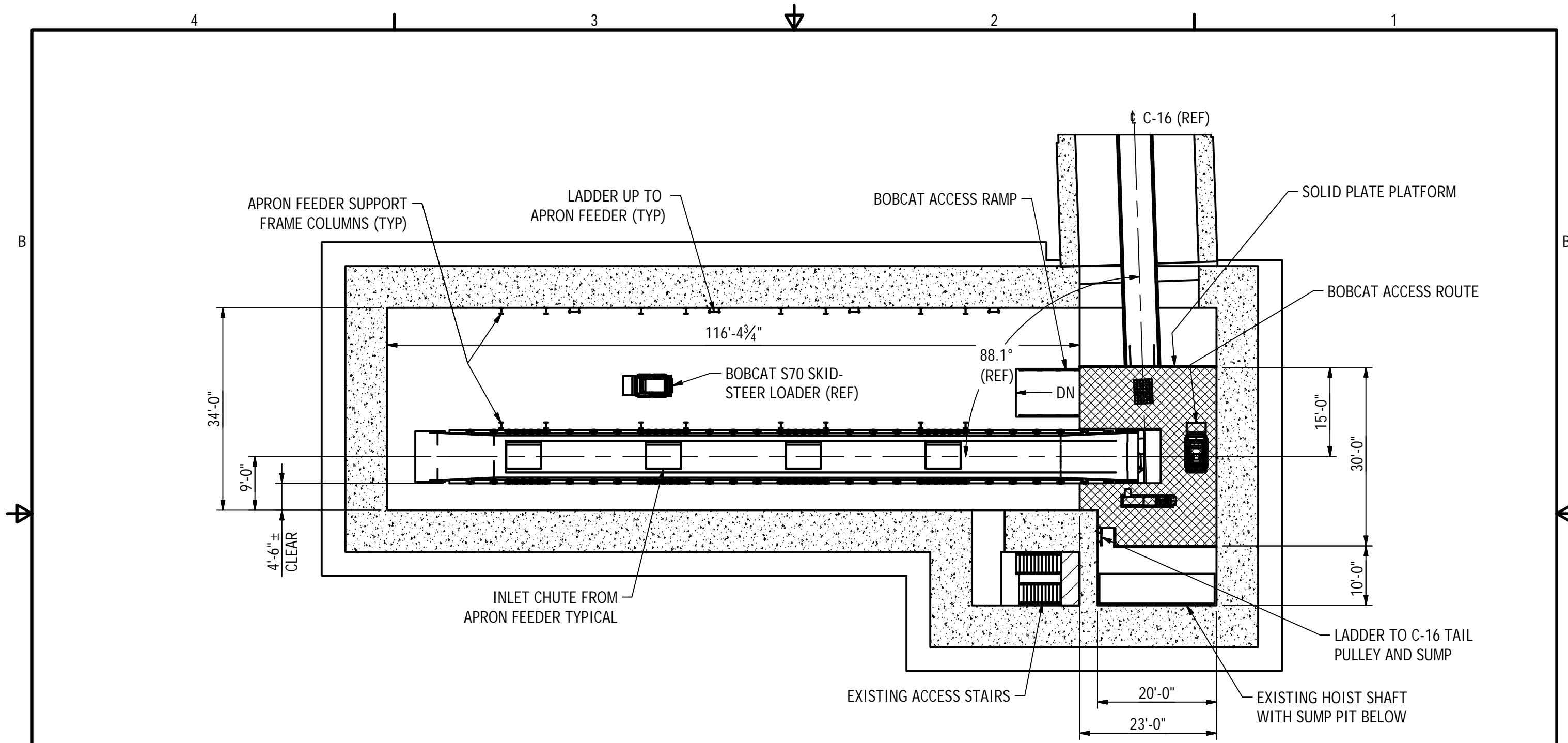
DIMENSIONS ARE IN INCHES
 DO NOT SCALE DRAWING

A&S Technical Services

DRAWN BY GJD	STATUS CONCEPTUAL
CHECKED WFA	CREATED 2020-04-14
APPROVED ASPA	PROJECT A218-03
SIZE B	DRAWING NO. 101.02
	REV/N 0

Alabama State Port Authority
 ASPA RCD2 REPLACEMENT, Mobile, AL

PLAN VIEW
 AT APRON FEEDER FLOOR LEVEL



PLAN AT COLLECTION CONVEYOR
T.O.CONC. FLOOR ELEV. -26.0'

REV	DATE	BY	DESCRIPTION
0	2020-06-04	GJD	ISSUED FOR BID
REVISION HISTORY			

SCALE: 1:200
UNLESS NOTED OTHERWISE

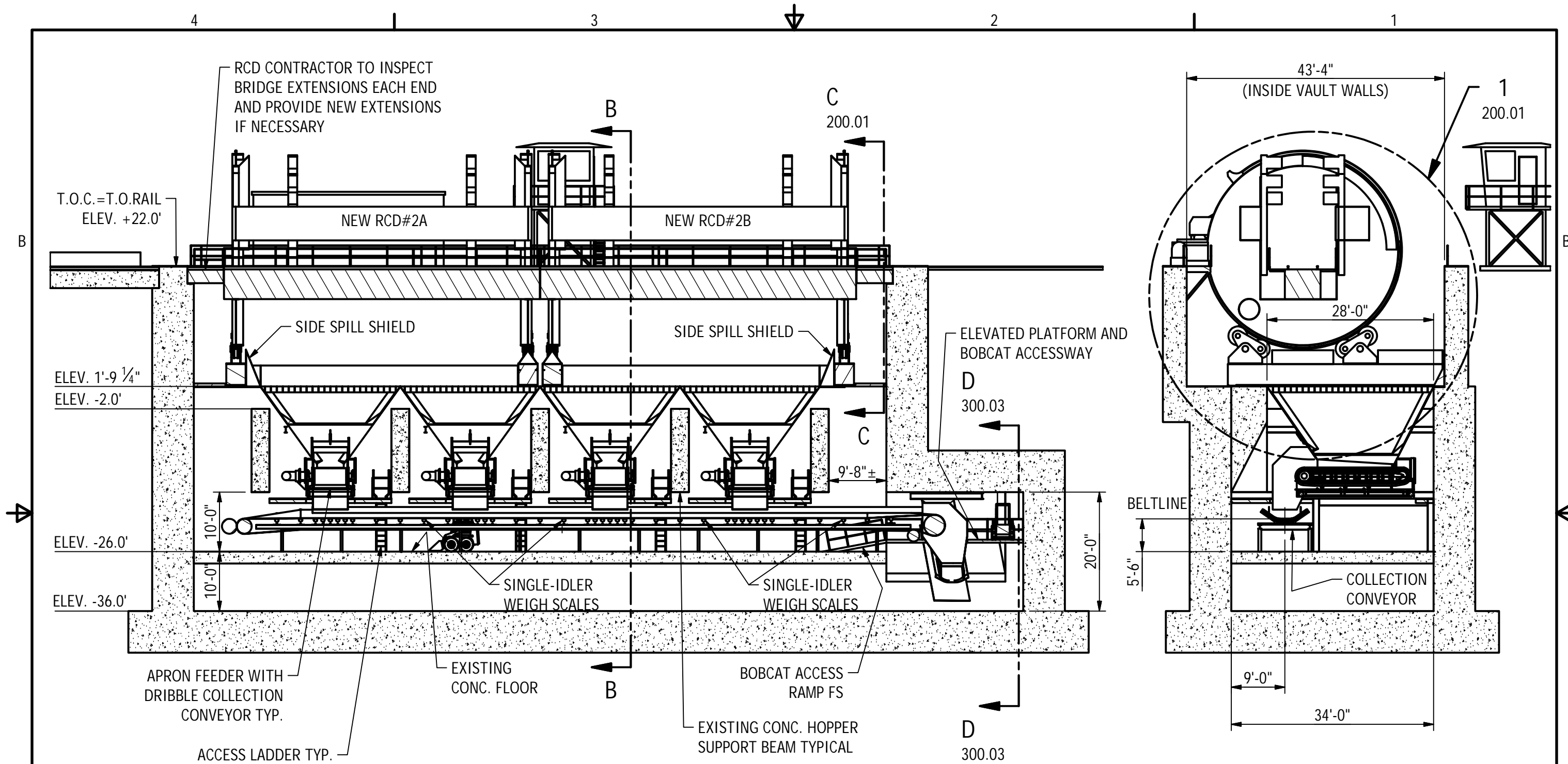
DIMENSIONS ARE IN INCHES
DO NOT SCALE DRAWING

**A&S
Technical
Services**

DRAWN BY GJD	STATUS CONCEPTUAL
CHECKED WFA	CREATED 2020-04-14
APPROVED ASPA	PROJECT A218-03
SIZE B	DRAWING NO. 101.03
	REV/N 0

Alabama State Port Authority
ASPA RCD2 REPLACEMENT, Mobile, AL

PLAN VIEW
AT COLLECTION CONVEYOR FLOOR LEVEL



SECTION A-A
101.01

SECTION B-B

REV	DATE	BY	DESCRIPTION
0	2020-06-04	GJD	ISSUED FOR BID

REVISION HISTORY

SCALE: 1:200
UNLESS NOTED OTHERWISE

DIMENSIONS ARE IN INCHES
DO NOT SCALE DRAWING

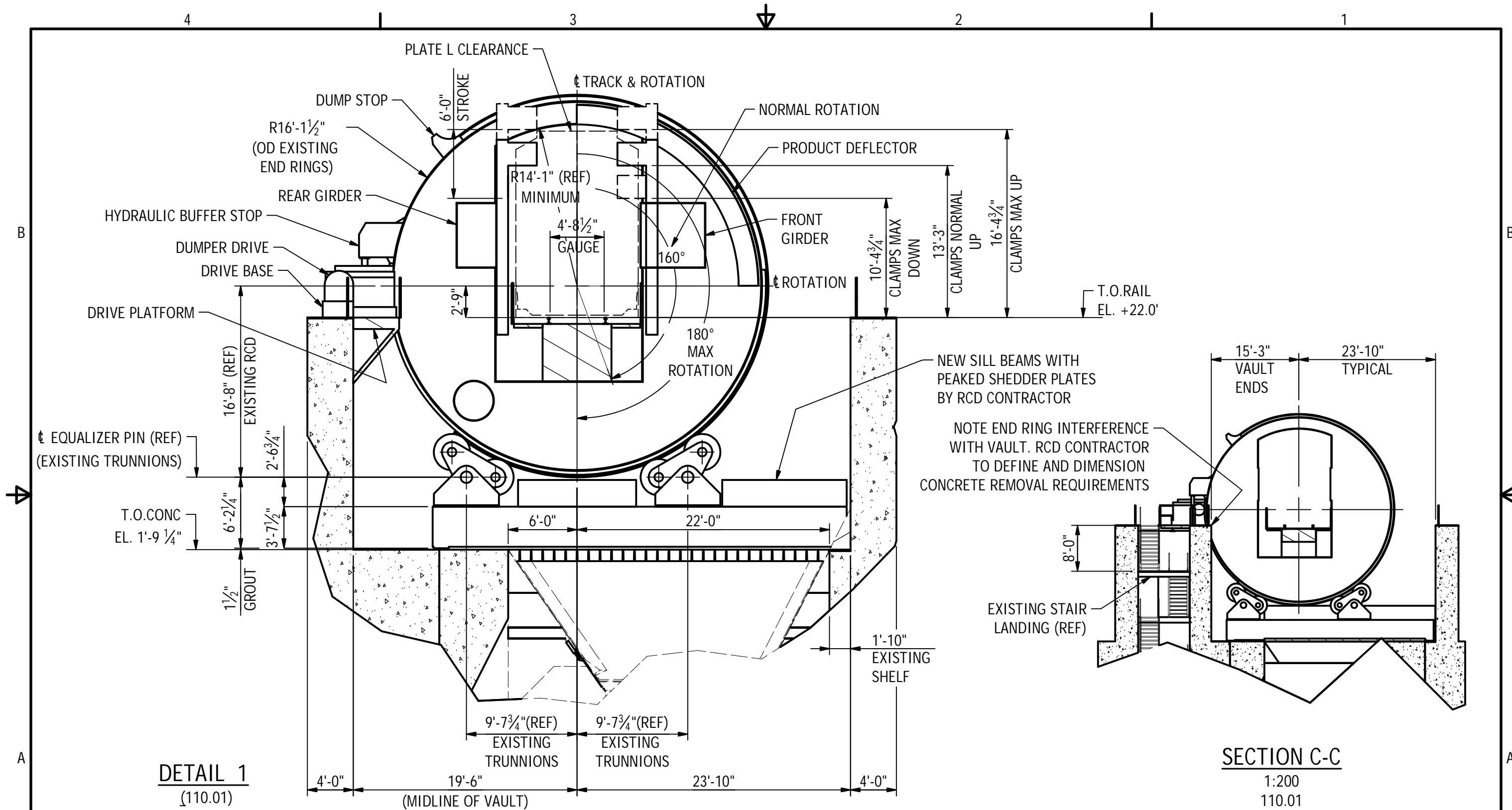


A&S
Technical
Services

DRAWN BY GJD	STATUS CONCEPTUAL
CHECKED WFA	CREATED 2020-04-14
APPROVED ASPA	PROJECT A218-03
SIZE B	DRAWING NO. 110.01
	REV/N 0

Alabama State Port Authority
ASPA RCD2 REPLACEMENT, Mobile, AL

GENERAL ARRANGEMENT
SECTION VIEWS



DETAIL 1
(110.01)

SECTION C-C
1:200
110.01

REV	DATE	BY	DESCRIPTION
0	2020-06-04	GJD	ISSUED FOR BID
REVISION HISTORY			

SCALE: 1 / 100
UNLESS NOTED OTHERWISE

DIMENSIONS ARE IN INCHES
DO NOT SCALE DRAWING

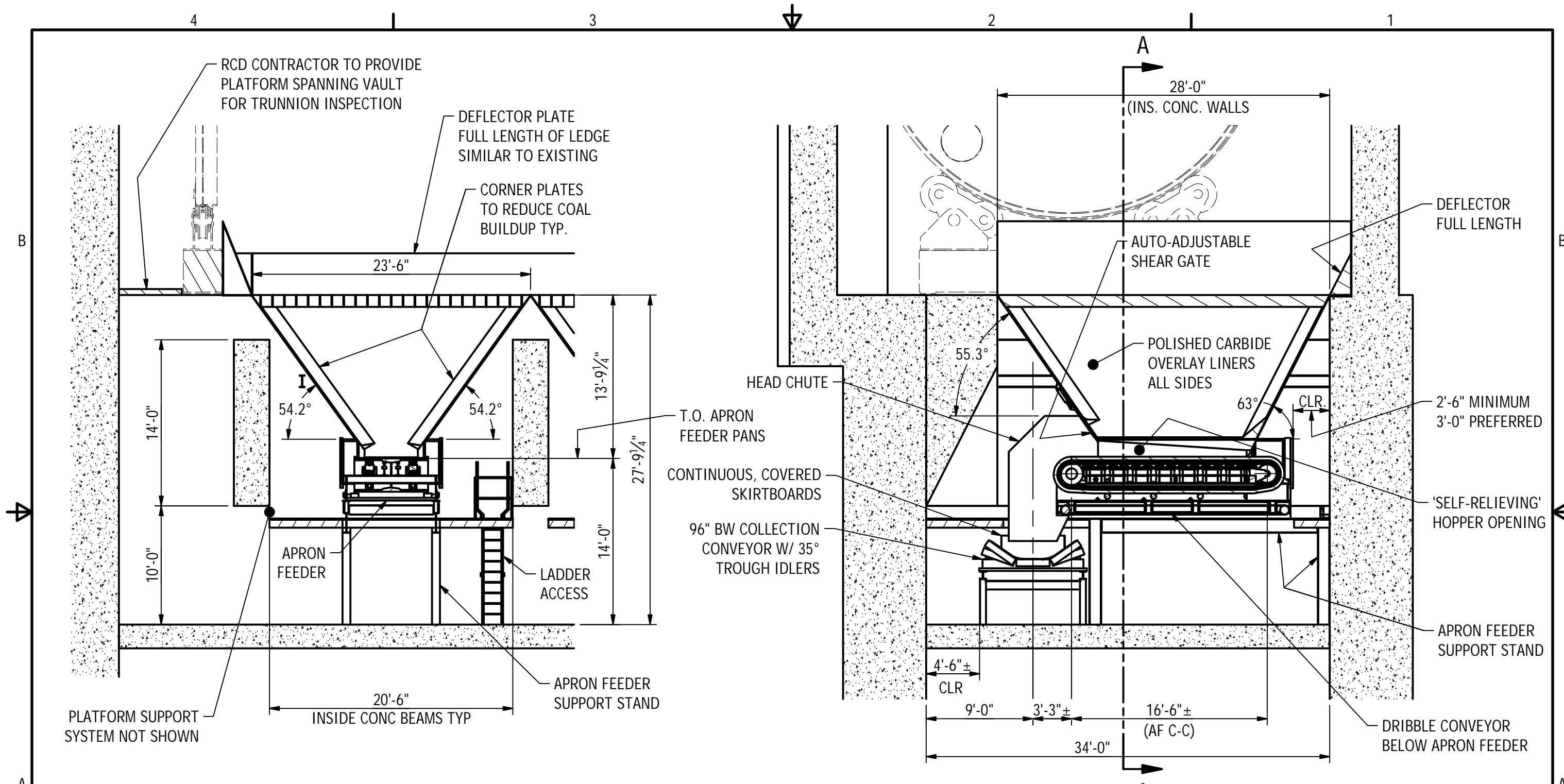


A&S
Technical
Services

DRAWN BY GJD	STATUS CONCEPTUAL
CHECKED WFA	CREATED 2020-04-14
APPROVED ASPA	PROJECT A218-03
SIZE B	DRAWING NO. 200.01
	REV/N 0

Alabama State Port Authority
ASPA RCD2 REPLACEMENT, Mobile, AL

END RING ELEVATION



SECTION A-A

SECTION AT HOPPER

REV	DATE	BY	DESCRIPTION
0	2020-06-04	GJD	ISSUED FOR BID
REVISION HISTORY			

SCALE: 1:100
UNLESS NOTED OTHERWISE

DIMENSIONS ARE IN INCHES
DO NOT SCALE DRAWING

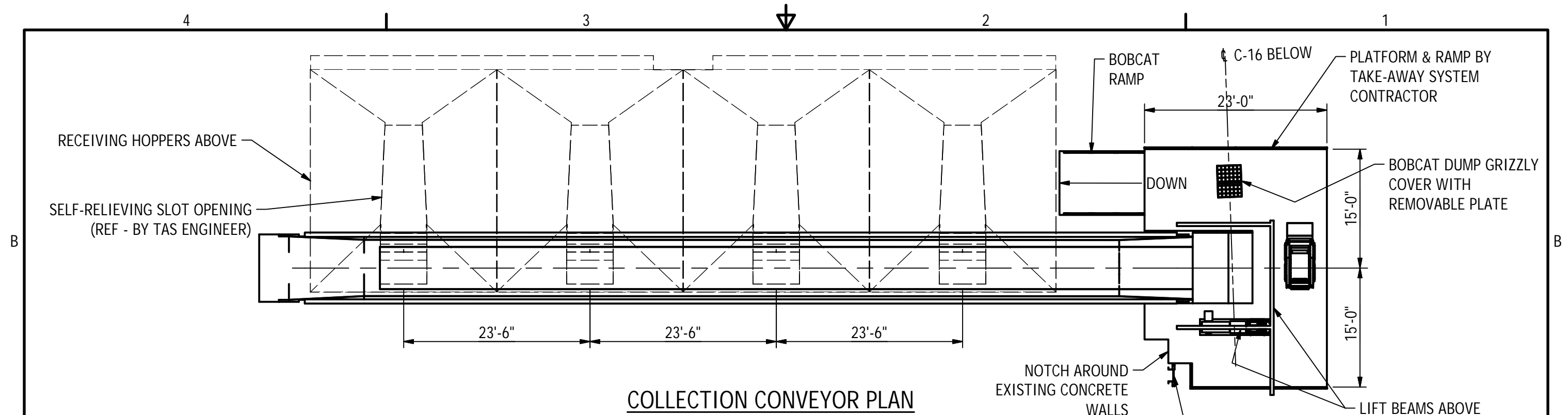
A&S
Technical
Services



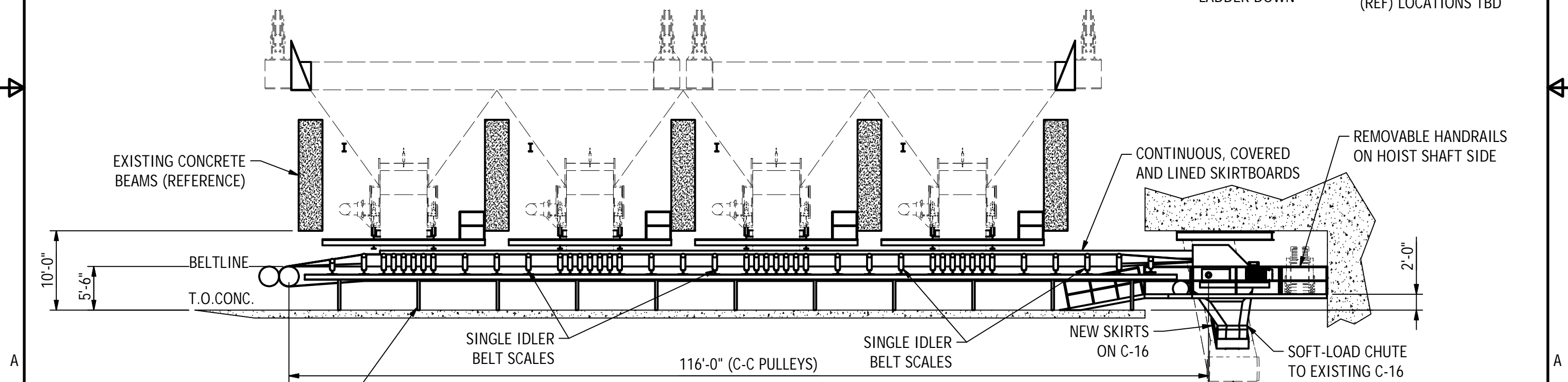
DRAWN BY GJD	STATUS CONCEPTUAL
CHECKED WFA	CREATED 2020-04-14
APPROVED ASPA	PROJECT A218-03
SIZE B	DRAWING NO. 300.01
	REV 0

Alabama State Port Authority
ASPA RCD2 REPLACEMENT, Mobile, AL

TAKE-AWAY SYSTEM DETAILS
HOPPPER / APRON FEEDER GA



COLLECTION CONVEYOR PLAN



COLLECTION CONVEYOR ELEVATION

CONVEYOR STRUCTURE REFERENCE ONLY
 DESIGN BY TAKE-AWAY SYSTEM CONTRACTOR
 TO CONSIDER CLEANUP UNDER CONVEYOR

REV	DATE	BY	DESCRIPTION
0	2020-06-04	GJD	ISSUED FOR BID
REVISION HISTORY			

SCALE: 1:150
 UNLESS NOTED OTHERWISE

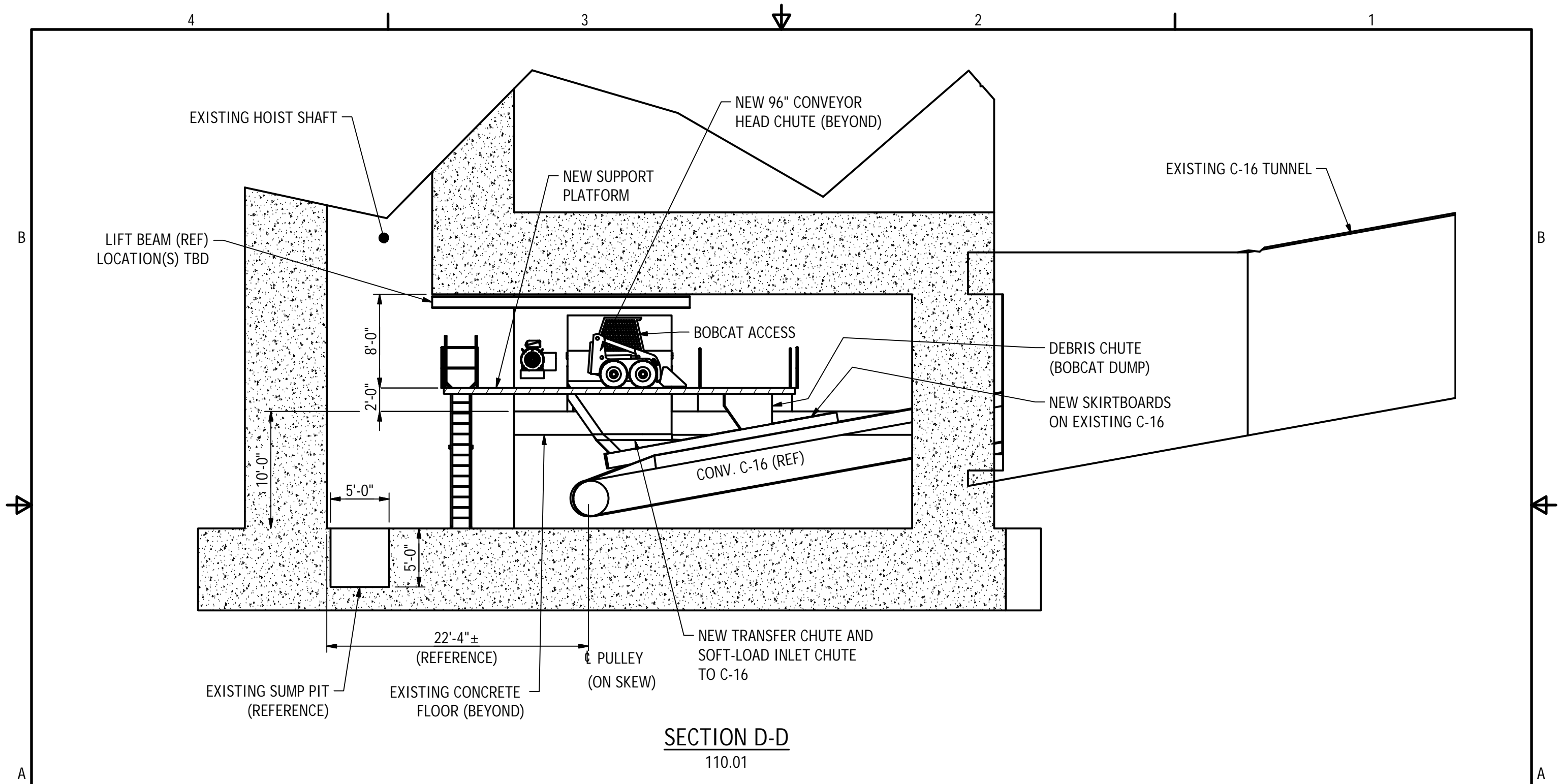
DIMENSIONS ARE IN INCHES
 DO NOT SCALE DRAWING



**A&S
 Technical
 Services**

DRAWN BY GJD	STATUS CONCEPTUAL
CHECKED WFA	CREATED 2020-04-14
APPROVED ASPA	PROJECT A218-03
SIZE B	DRAWING NO. 300.02
	REV/N 0

Alabama State Port Authority
 ASPA RCD2 REPLACEMENT, Mobile, AL
TAKE-AWAY SYSTEM DETAILS
COLLECTION CONVEYOR GA



SECTION D-D
110.01

REV	DATE	BY	DESCRIPTION
0	2020-06-04	GJD	ISSUED FOR BID
REVISION HISTORY			

SCALE: 1:100
UNLESS NOTED OTHERWISE

DIMENSIONS ARE IN INCHES
DO NOT SCALE DRAWING



A&S
Technical
Services

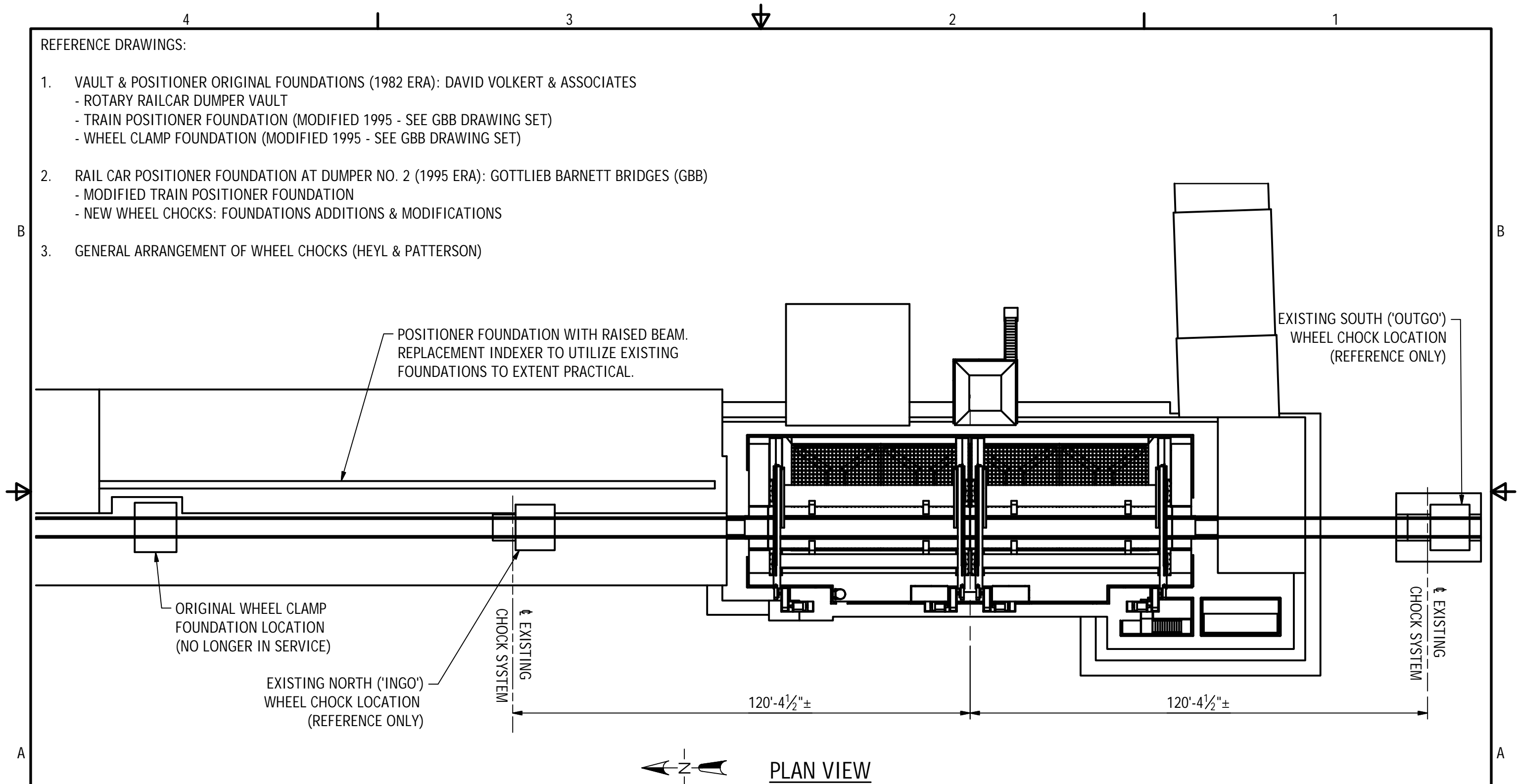
DRAWN BY GJD	STATUS CONCEPTUAL
CHECKED WFA	CREATED 2020-04-14
APPROVED ASPA	PROJECT A218-03
SIZE B	DRAWING NO. 300.03
	REV/N 0

Alabama State Port Authority
ASPA RCD2 REPLACEMENT, Mobile, AL


TAKE-AWAY SYSTEM DETAILS
VAULT SECTION

REFERENCE DRAWINGS:

1. VAULT & POSITIONER ORIGINAL FOUNDATIONS (1982 ERA): DAVID VOLKERT & ASSOCIATES
 - ROTARY RAILCAR DUMPER VAULT
 - TRAIN POSITIONER FOUNDATION (MODIFIED 1995 - SEE GBB DRAWING SET)
 - WHEEL CLAMP FOUNDATION (MODIFIED 1995 - SEE GBB DRAWING SET)
2. RAIL CAR POSITIONER FOUNDATION AT DUMPER NO. 2 (1995 ERA): GOTTLIEB BARNETT BRIDGES (GBB)
 - MODIFIED TRAIN POSITIONER FOUNDATION
 - NEW WHEEL CHOCKS: FOUNDATIONS ADDITIONS & MODIFICATIONS
3. GENERAL ARRANGEMENT OF WHEEL CHOCKS (HEYL & PATTERSON)



PLAN VIEW

SCALE: 1:300 UNLESS NOTED OTHERWISE				DIMENSIONS ARE IN INCHES DO NOT SCALE DRAWING		DRAWN BY GJD		STATUS CONCEPTUAL		Alabama State Port Authority ASPA RCD2 REPLACEMENT, Mobile, AL	
0 2020-06-04 GJD ISSUED FOR BID				 A&S Technical Services		CHECKED WFA		CREATED 2020-04-14			
REVISION HISTORY						APPROVED ASPA		PROJECT A218-03			
REV	DATE	BY	DESCRIPTION	SIZE	DRAWING NO.	REV/N	PLAN EXISTING INDEXER & WHEEL CLAMPS				
0	2020-06-04	GJD	ISSUED FOR BID	B	400.01	0					