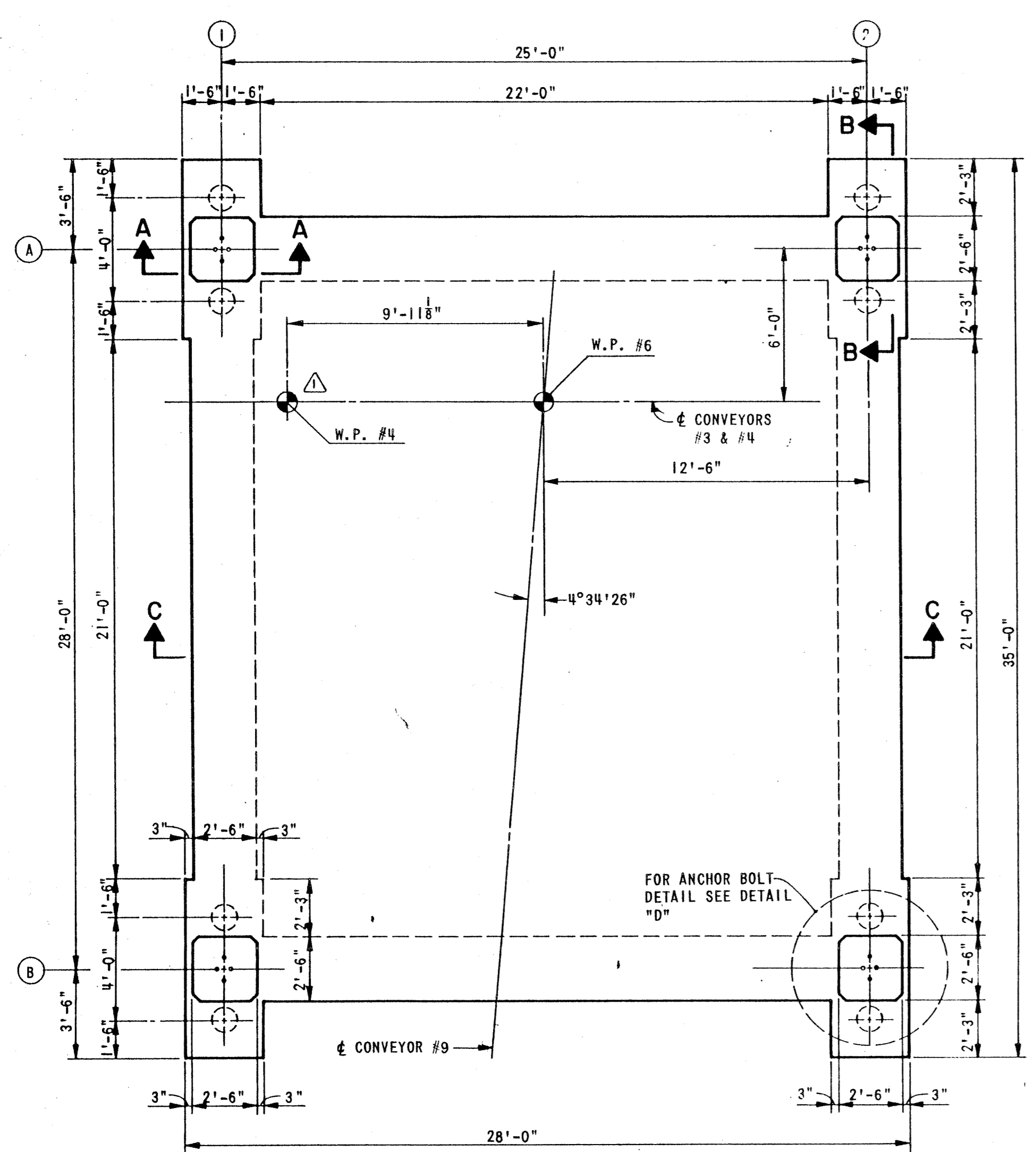
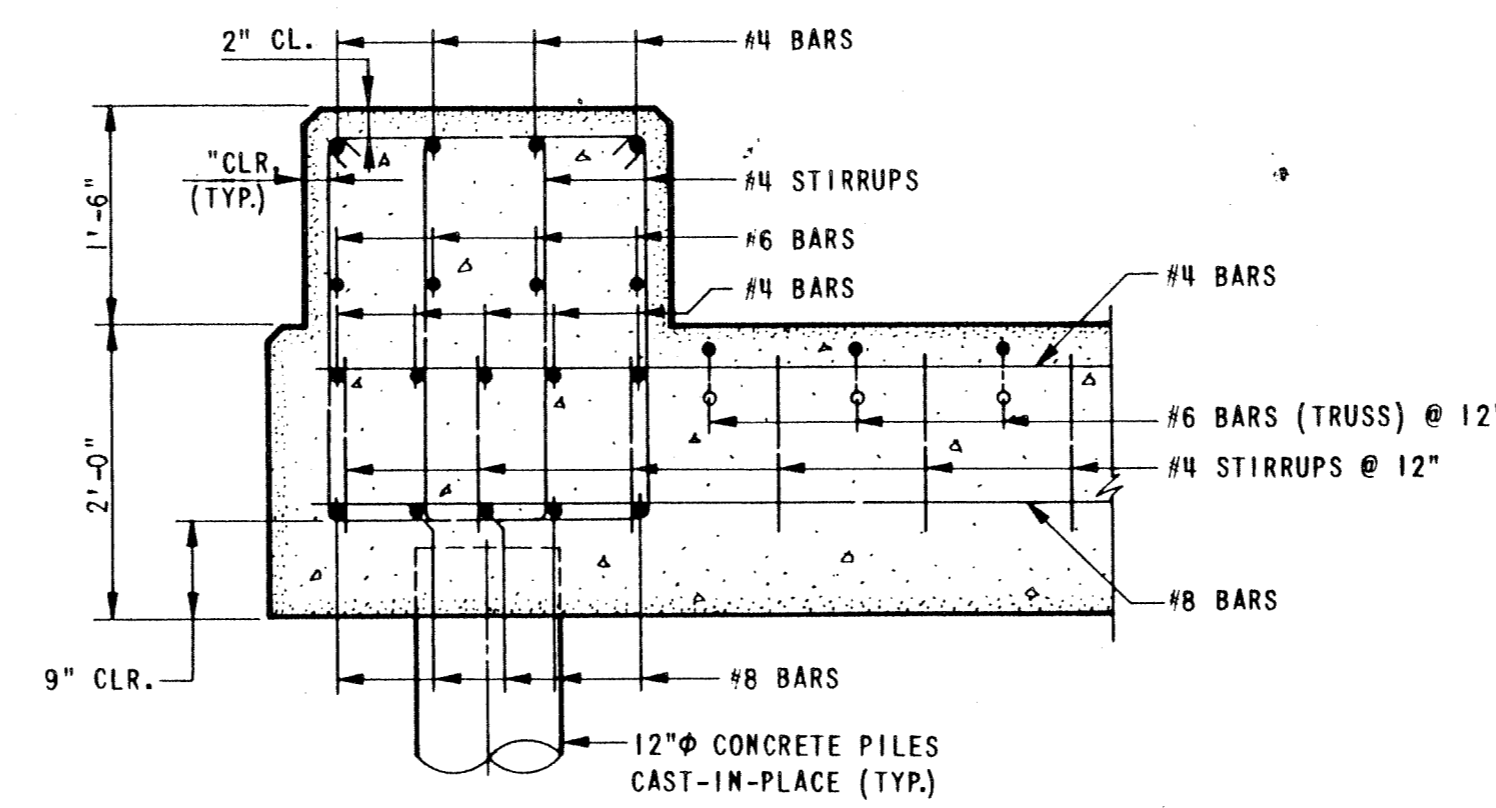


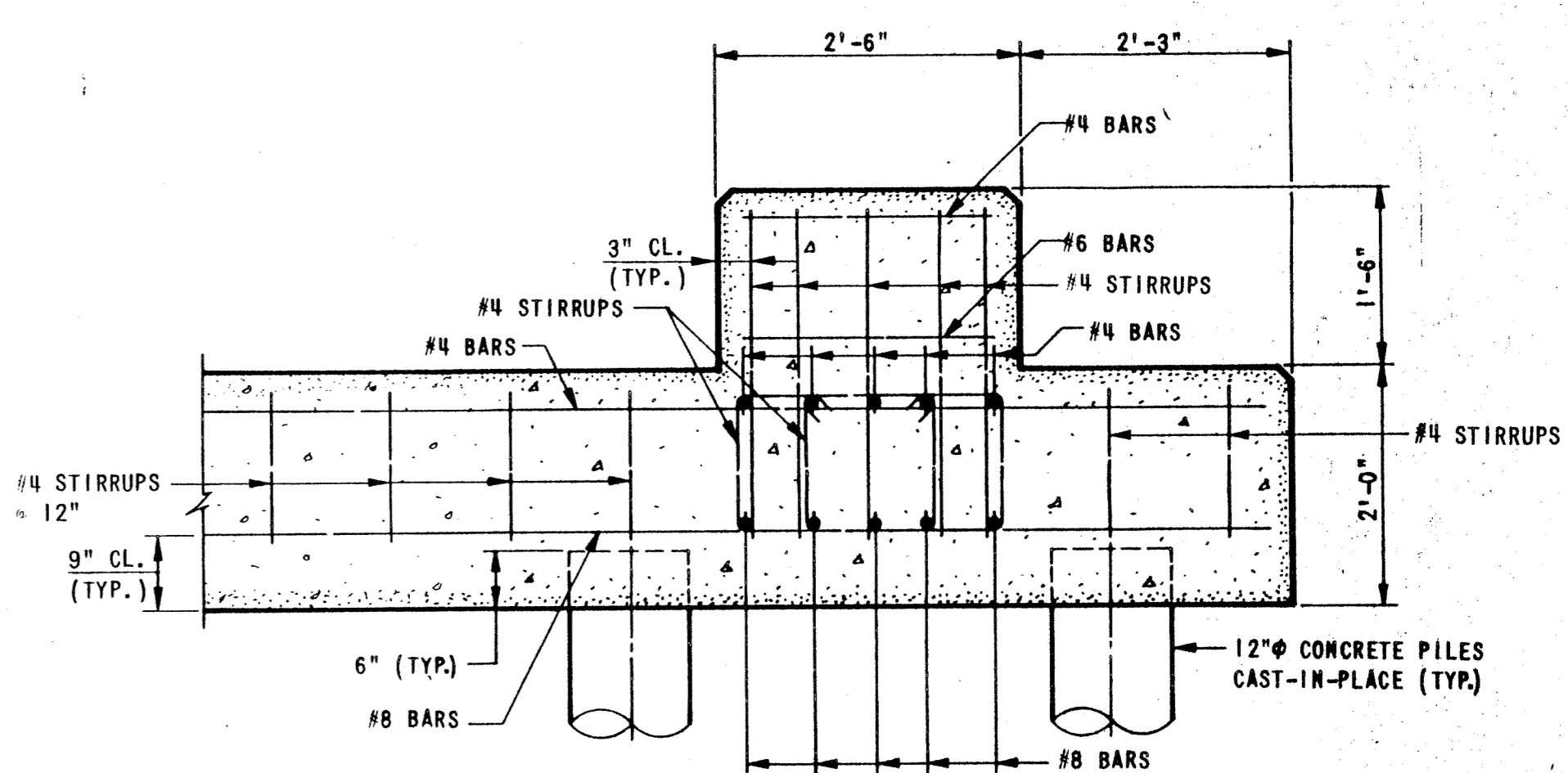
| | | |
|------------|-----------|-----------|
| A.F.E. NO. | SPEC. NO. | SHEET NO. |
| 1365 | 379 | 1/5 |



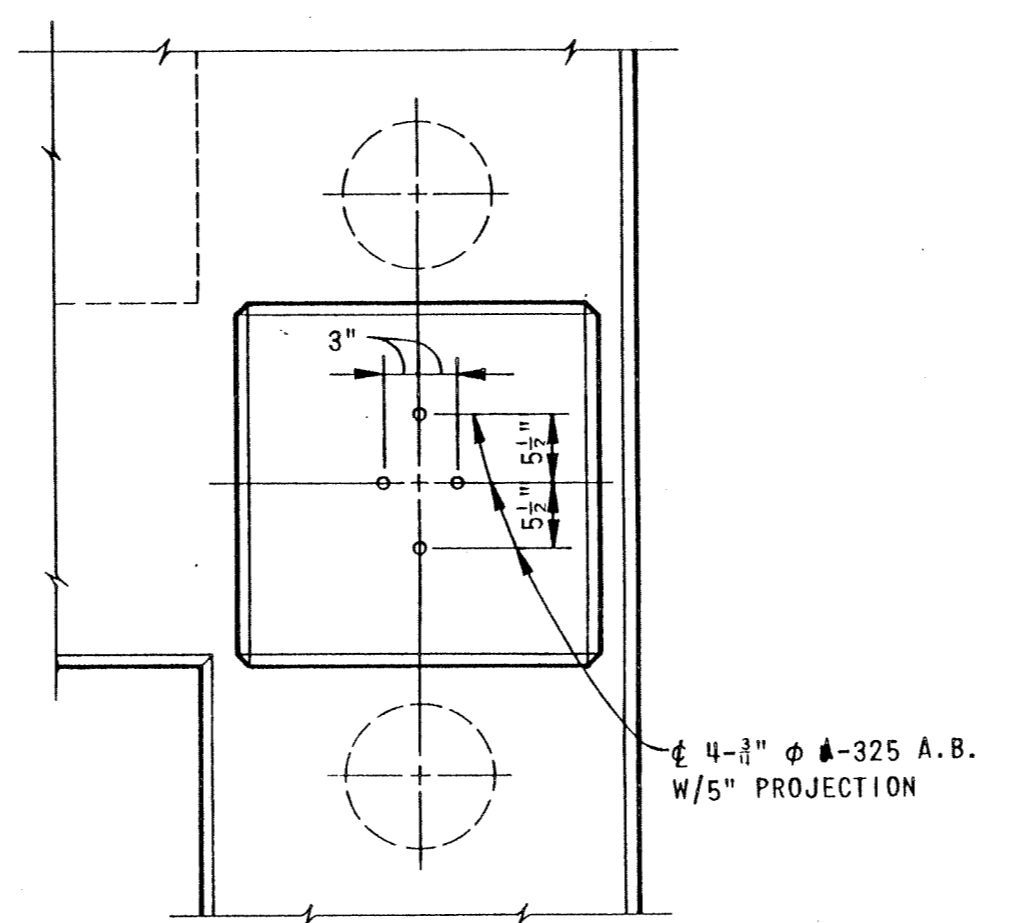
PLAN
SCALE: 1/4" = 1'-0"



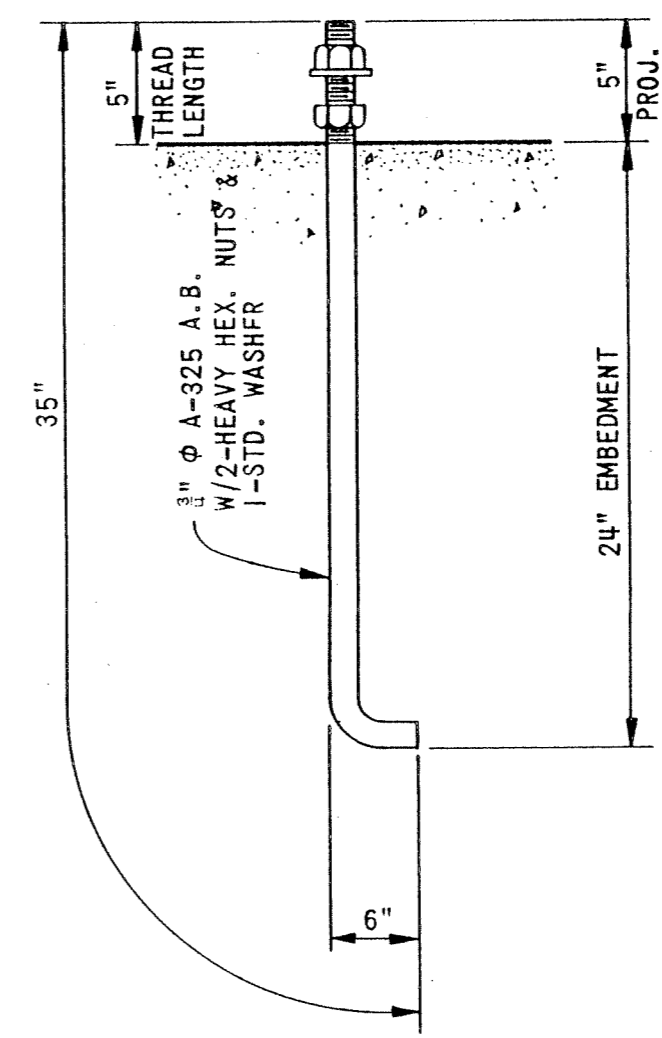
SECTION A-A
SCALE: 3/8" = 1'-0"



SECTION B-B
SCALE: 3/8" = 1'-0"

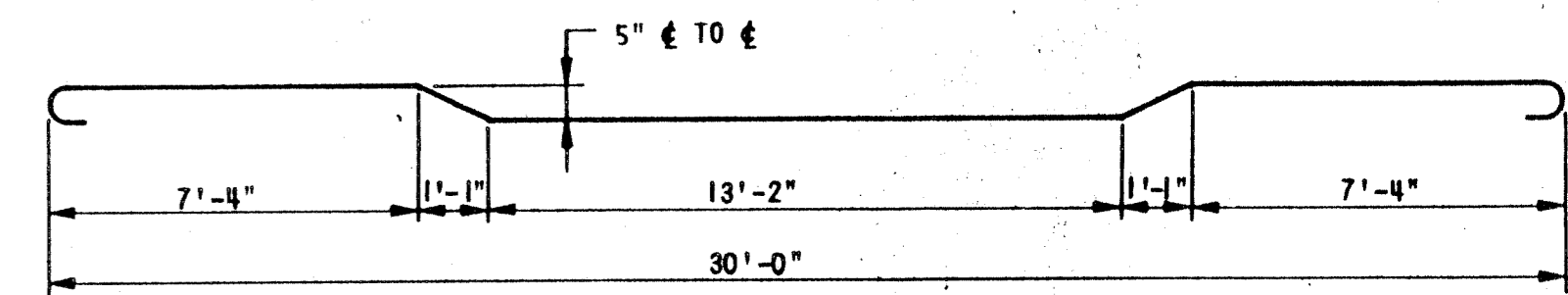


DETAIL "D"
SCALE: 3/8" = 1'-0"

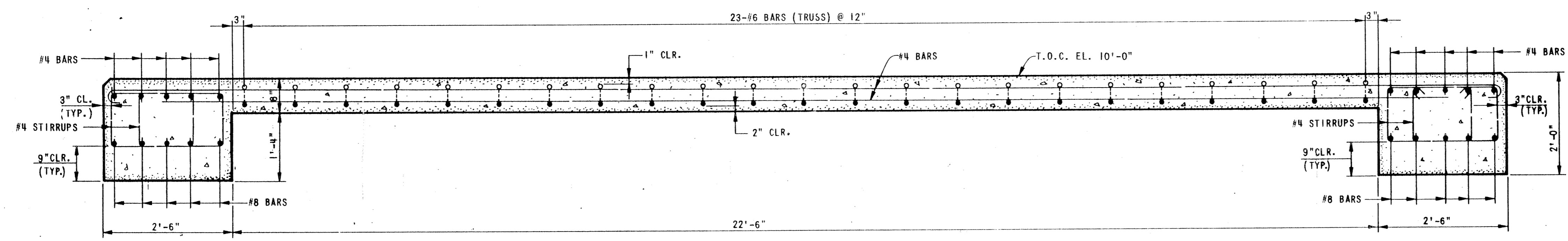


ANCHOR BOLT DETAIL
SCALE: 1 1/8" = 1'-0"

- NOTES:**
1. ALL EXPOSED EDGES OF CONCRETE TO HAVE 1" CHAMFER.
 2. ALL CONCRETE USED IN FOUNDATIONS TO BE CLASS A, TYPE 1a.
 3. ALL STANDARD ACI BENDS, HOOKS & SPLICES UNLESS OTHERWISE NOTED.
 4. THE CONTRACTOR SHALL PROVIDE THE ENGINEER WITH BILLS OF REINFORCEMENT AND BENDING DETAILS FOR APPROVAL PRIOR TO FABRICATION OF MATERIALS.
 5. FOR 12" CAST-IN-PLACE PIPE PILE DETAILS, SEE SHEET 23.
 6. ALL ANCHOR BOLTS, NUTS, AND WASHERS TO BE HOT DIPPED GALVANIZED.



TRUSS BAR DETAIL



SECTION C-C

FOR INFORMATION ONLY
THIS DOCUMENT IS PROVIDED FOR BASIC INFORMATION ONLY AND NO REPRESENTATION IS MADE AS TO THE ACCURACY OF INFORMATION SHOWN HEREON. USER SHALL VERIFY ALL SUCH INFORMATION.

ALABAMA STATE DOCKS

PLANT EXPANSION

**TOWER T-6
FOUNDATION & DETAILS**

**DAVID VOLKERT & ASSOCIATES
CONSULTING ENGINEERS**

| | | |
|-----------------|-----------------|----------------|
| DESIGNED C.L.H. | DETAILED G.G.M. | TRACED G.G.M. |
| CHECKED F.E.S. | CHECKED C.L.H. | CHECKED C.L.H. |
| DATE | | |

BY POLYTRACE 041