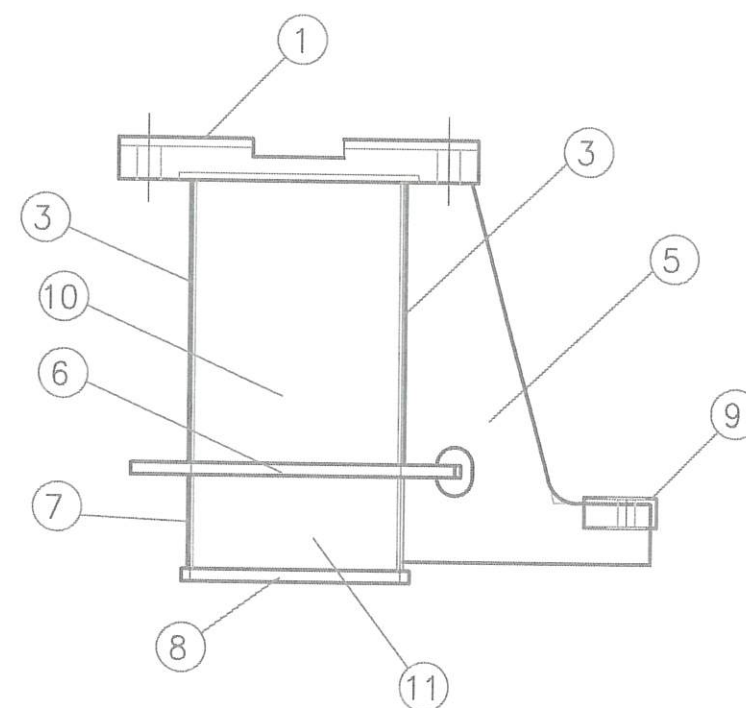
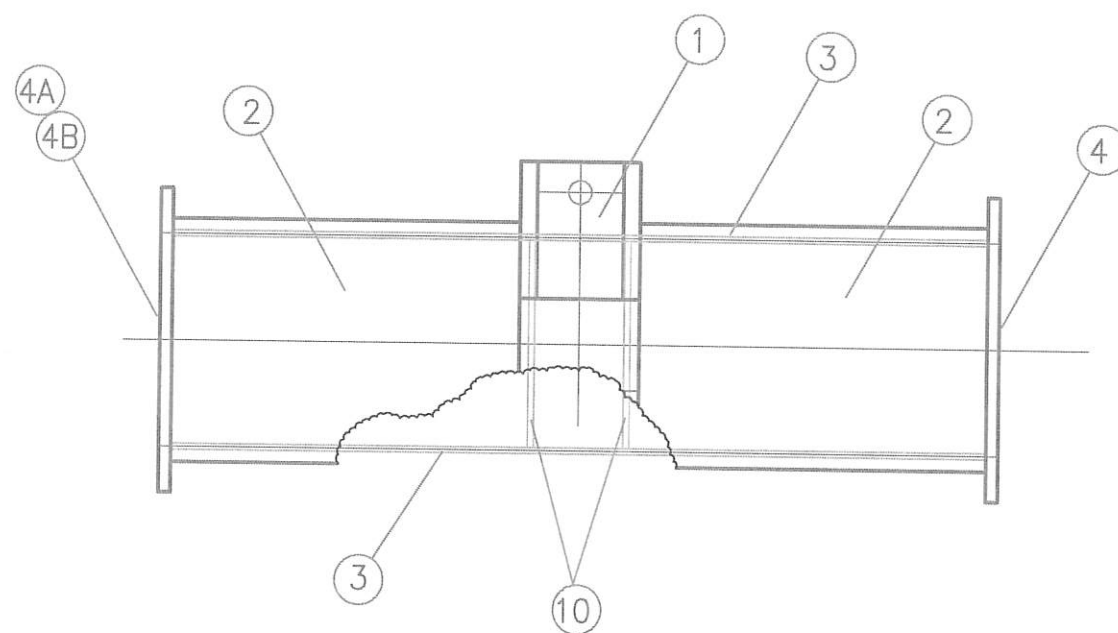


ELEVATION



SECTION



PLAN

KEY PLATE

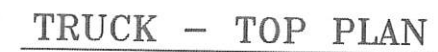
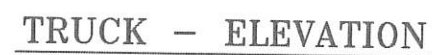
- | | |
|----------------------|------------------------|
| ① KEY PLATE | ⑦ SKID GUSSET |
| ② TOP PLATE | ⑧ SKID PLATE |
| ③ SIDE PLATE | ⑨ MOUNTING PLATE |
| ④A END PLATE | ⑩ INTERNAL GUSSET |
| ④B END PLATE, FLANGE | ⑪ SKID INTERNAL GUSSET |
| ⑤ SIDE BRACE | ⑫ HUB |
| ⑥ BOTTOM PLATE | |

REVISION NO.	DESCRIPTION	DATE	BY:
REVISION NO.	DESCRIPTION	DATE	BY:
REVISION NO.	DESCRIPTION	DATE	BY:
REVISION NO.	DESCRIPTION	DATE	BY:
REVISION NO.	DESCRIPTION	DATE	BY:
REV 0	ISSUED FOR BID	02/03/21	TMA

McDUFFIE COAL TERMINAL
SHIPLOADER 2 – EQUALIZER/TRUCK REPLACE.

TRUCK ASSYMBLY – LEGEND

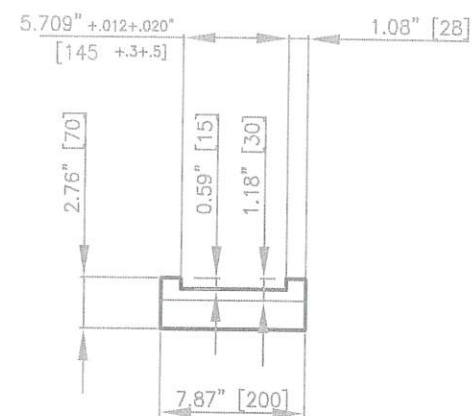
MOBILE		ALABAMA STATE PORT AUTHORITY	
SCALE:	N/A	DRAWN BY:	T.M.A.
DATE:	10-27-20	CHECKED BY:	
JOB NO.:	MDSL2102020	DRAWING NAME:	SL2TR-004
		REVISION NO.:	0



McDUFFIE COAL TERMINAL
SHIPLOADER 2 - EQUALIZER/TRUCK REPLACE.
TRUCK FRAME ASSYMBLY - DETAILS

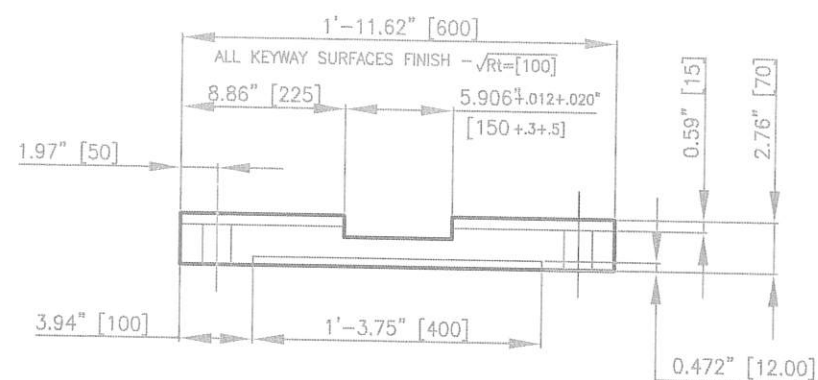
ALABAMA STATE
PORT AUTHORITY

ALABAMA			
SCALE: N/A	DRAWN BY: T.M.A.	CHECKED BY:	APPROVED BY:
DATE : 10-27-20	JOB NO. : MDSL2102020	DRAWING NAME: SL2TR-005	REVISION NO. : 0

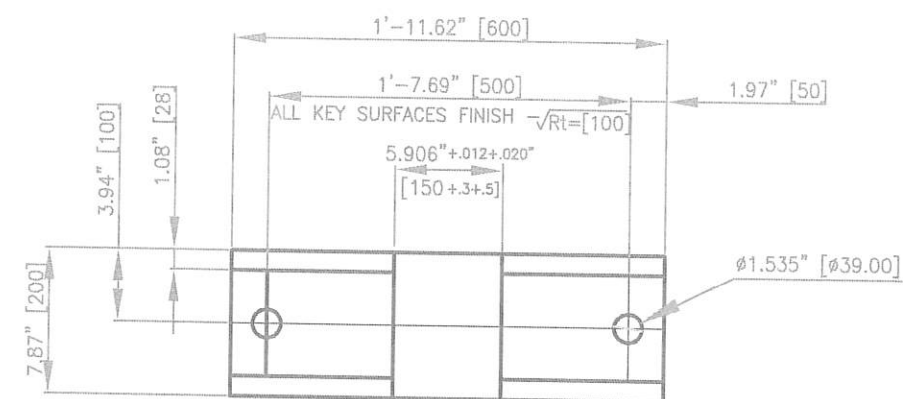


ALL KEYWAY SURFACES FINISH $\sqrt{Rt}=[100]$

SIDE

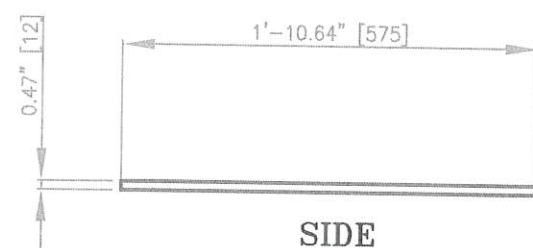


ELEVATION

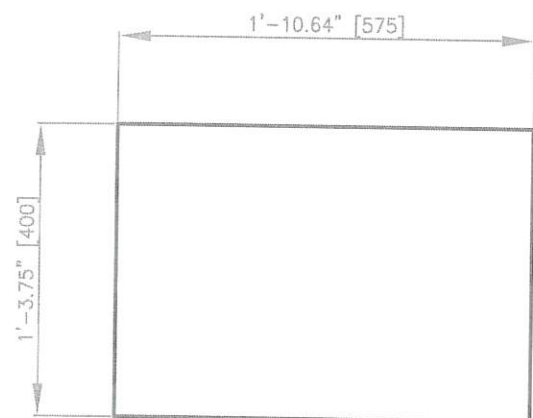


PLAN

ITEM 1 KEY PLATE
(1 REQUIRED EA.)

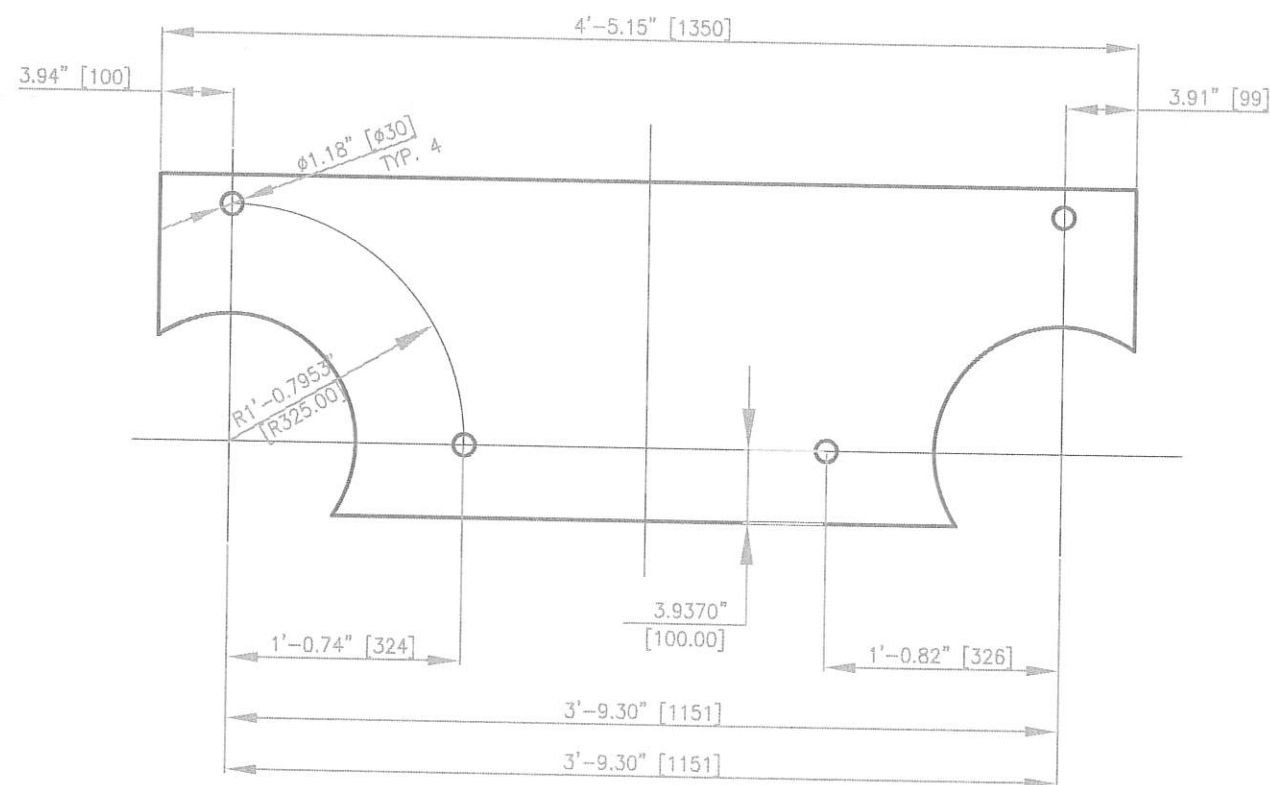


SIDE

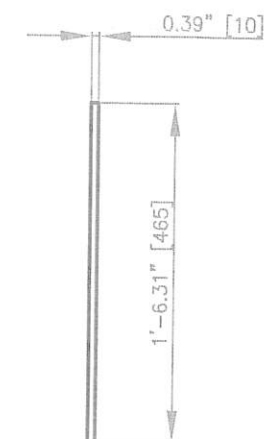


PLAN

ITEM 2 TOP PLATE
(1 REQUIRED EA.)



ELEVATION



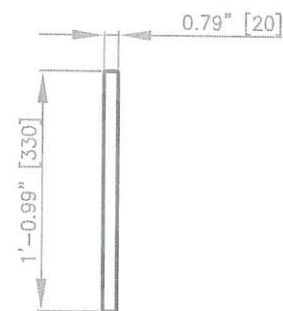
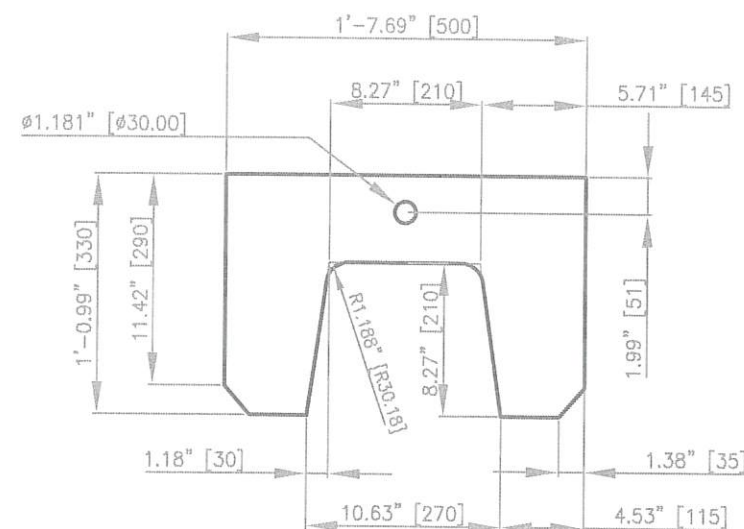
SIDE

ITEM 3 SIDE PLATE
(2 REQUIRED EA.)

REVISION NO.	DESCRIPTION	DATE	BY:
REVISION NO.	DESCRIPTION	DATE	BY:
REVISION NO.	DESCRIPTION	DATE	BY:
REVISION NO.	DESCRIPTION	DATE	BY:
REV 0	ISSUED FOR BID	02/03/21	TMA

McDUFFIE COAL TERMINAL
SHIPLOADER 2 - EQUALIZER/TRUCK REPLACE.
ITEMS 1,2,&3 -KEY, TOP & SIDE PLATES

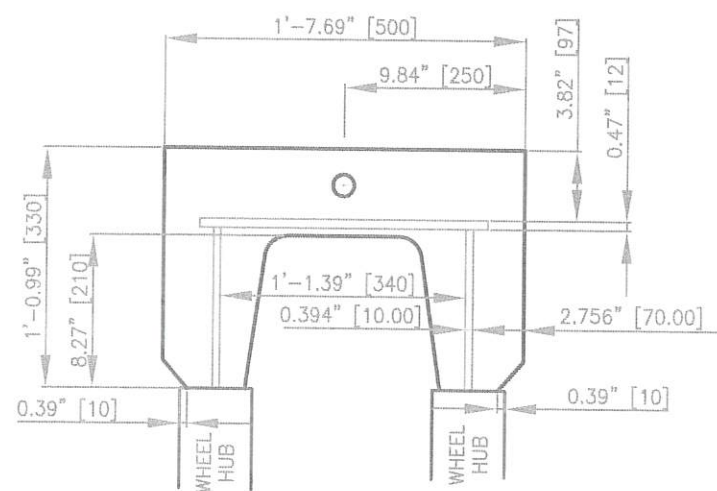
MOBILE		ALABAMA STATE PORT AUTHORITY	
SCALE: N/A	DRAWN BY: T.M.A.	CHECKED BY:	APPROVED BY:
DATE: 10-27-20	JOB NO.: MDL2102020	DRAWING NAME: SL2TR-006	REVISION NO.: 0



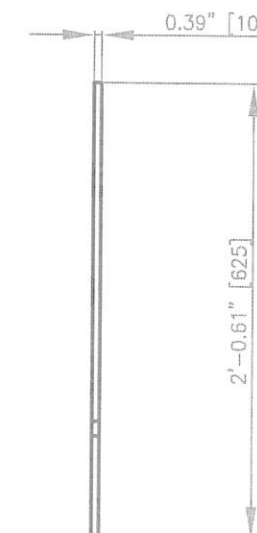
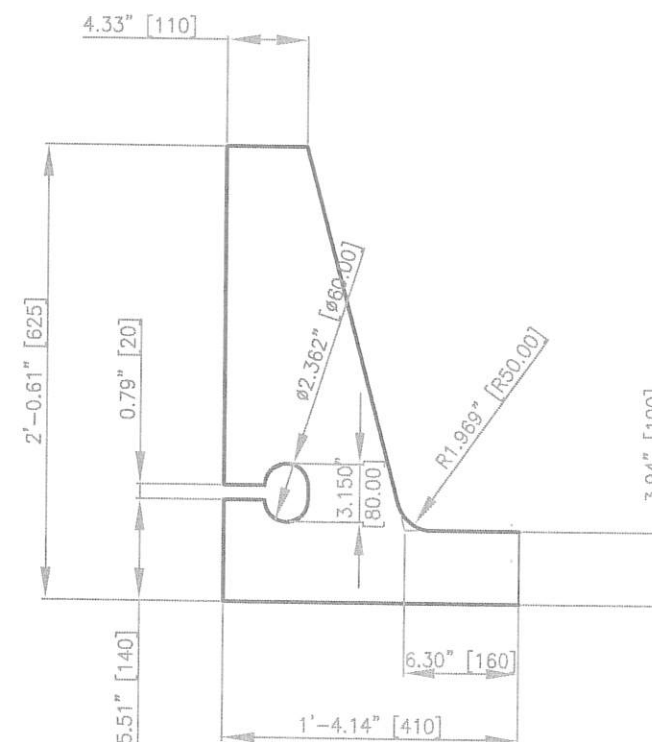
SIDE

ELEVATION

ITEM 4A END PLATE, C.S.
(12 REQUIRED TOTAL,
2 ON FOUR & 1 ON FOUR)




LAYOUT -ELEVATION

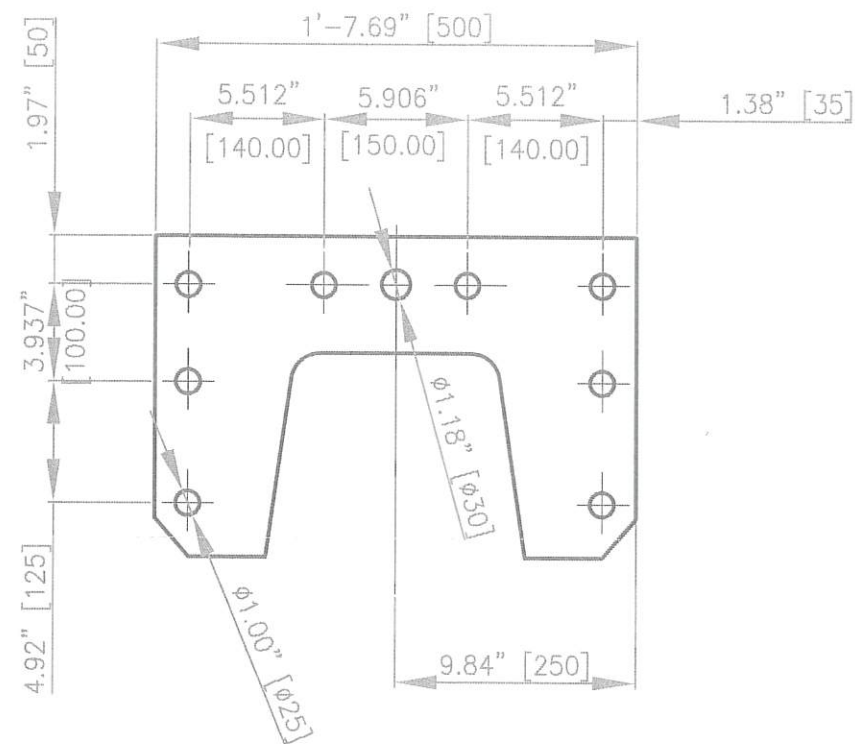


SIDE

ELEVATION

ITEM 5 SIDE BRACE, C.S.
(2 REQUIRED EA.)

REVISION NO.	DESCRIPTION	DATE	BY:	McDUFFIE COAL TERMINAL SHIPLOADER 2 – EQUALIZER/TRUCK REPLACE.	 ALABAMA STATE PORT AUTHORITY		
REVISION NO.	DESCRIPTION	DATE	BY:				
REVISION NO.	DESCRIPTION	DATE	BY:				
REVISION NO.	DESCRIPTION	DATE	BY:				
REVISION NO.	DESCRIPTION	DATE	BY:				
REV 0	ISSUED FOR BID	02/03/21	TMA	ITEMS 4A&5 – END PLATE & SIDE BRACKET			
					MOBILE	ALABAMA	
SCALE:		N/A		DRAWN BY: T.M.A.		CHECKED BY:	APPROVED BY:
DATE : 10-27-20		JOB NO. : MDSL2102020		DRAWING NAME: SL2TR-007		REVISION NO. : 0	



BOLT PATTERN

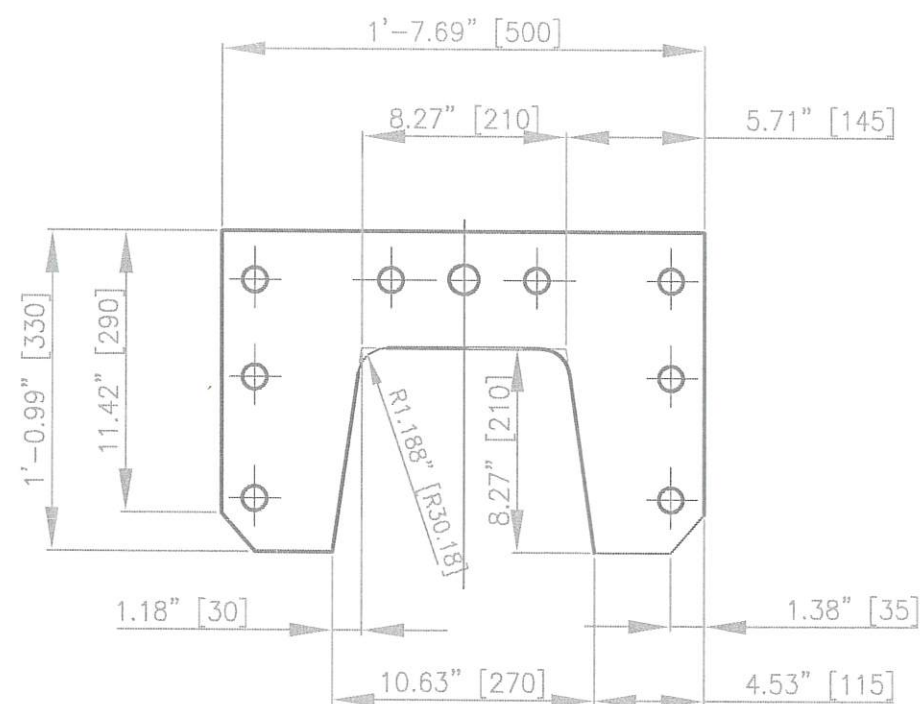
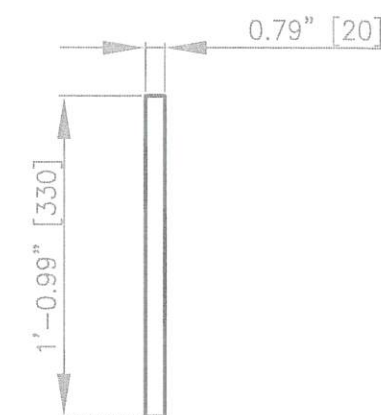
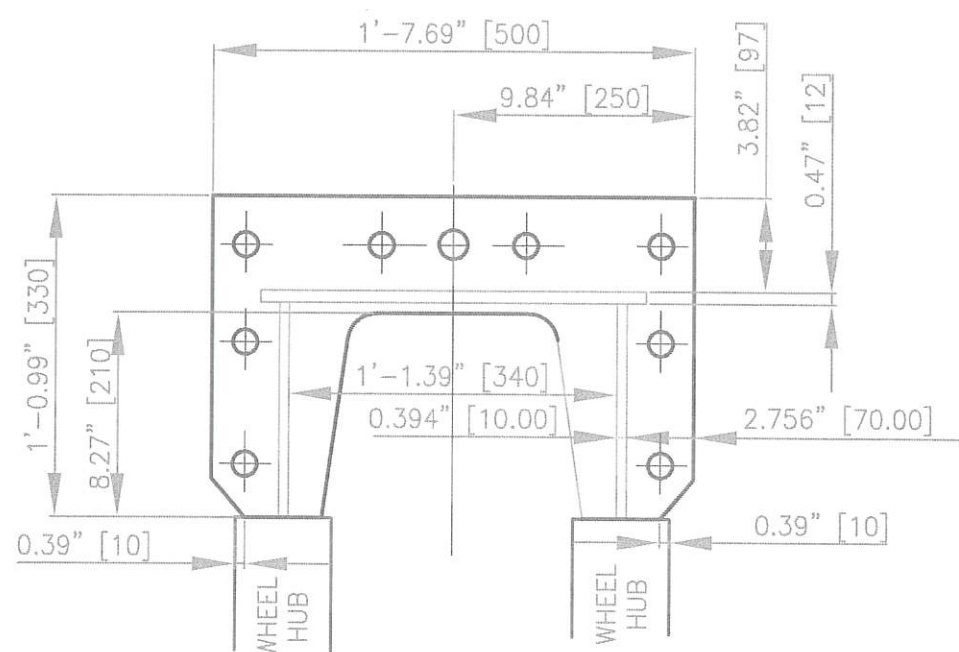


PLATE LAYOUT

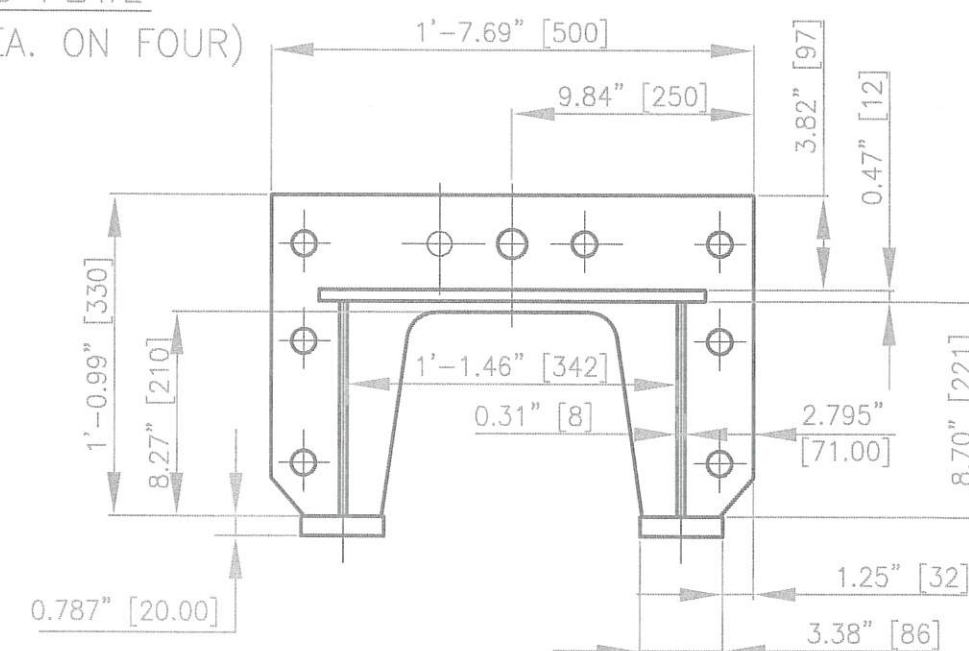


SIDE

ITEM 4B BOLTED END PLATE
(4 REQUIRED TOTAL, 1 EA. ON FOUR)



BUMPER ASSYMBLY DETAIL



PLOW ASSYMBLY DETAIL

REVISION NO.	DESCRIPTION	DATE	BY:
REVISION NO.	DESCRIPTION	DATE	BY:
REVISION NO.	DESCRIPTION	DATE	BY:
REVISION NO.	DESCRIPTION	DATE	BY:
REV 0	ISSUED FOR BID	02/03/21	TMA

McDUFFIE COAL TERMINAL
SHIPLOADER 2 - EQUALIZER/TRUCK REPLACE.

ITEM 4A -BOLTED END PLATE

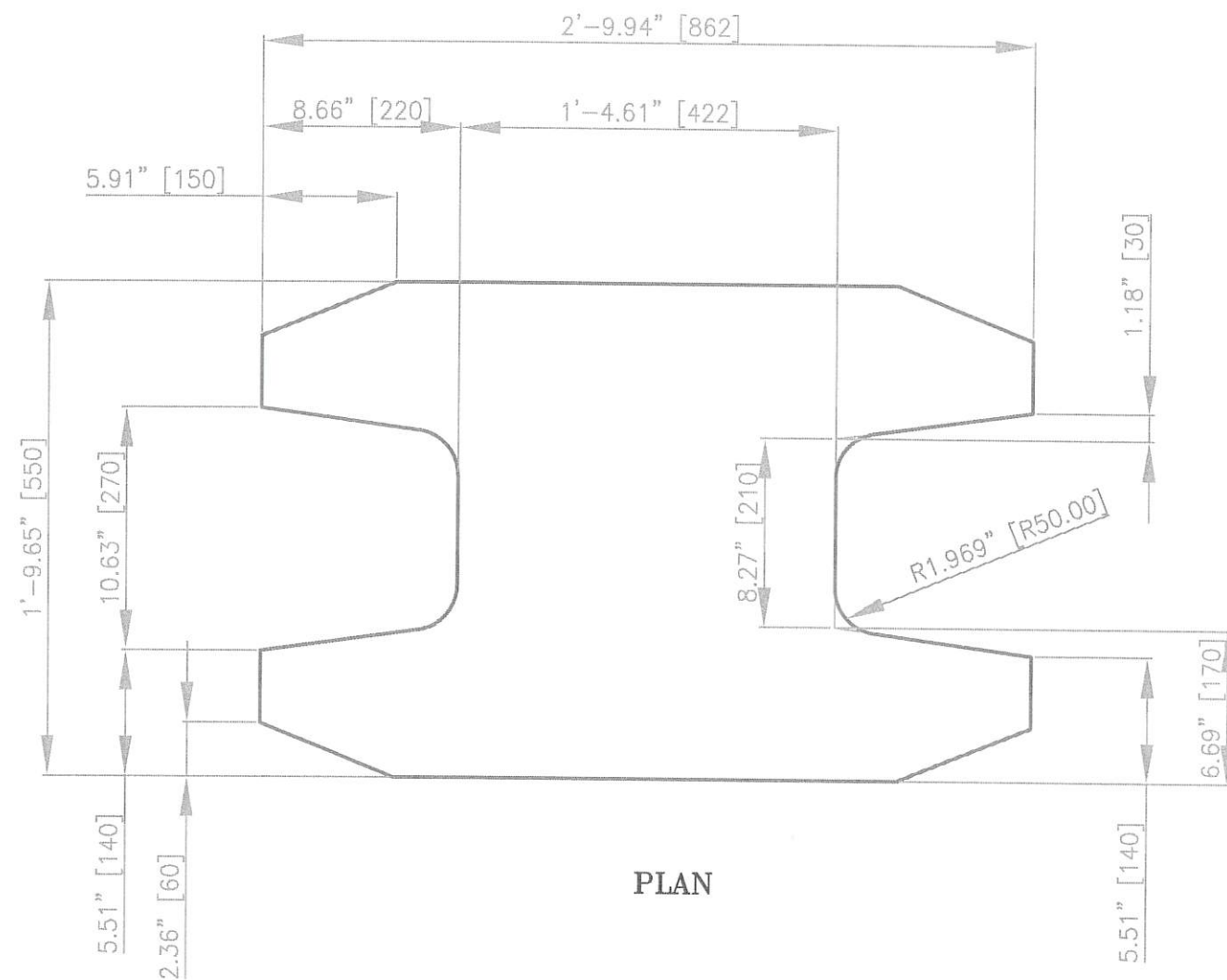


ALABAMA STATE
PORT AUTHORITY

MOBILE

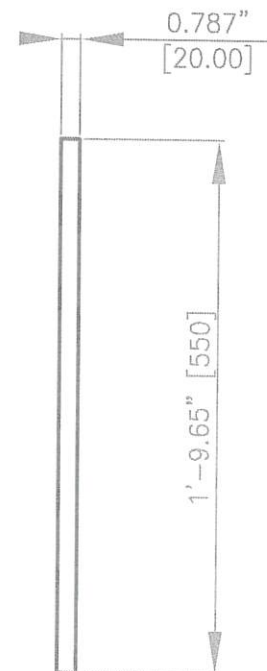
ALABAMA

SCALE: N/A	DRAWN BY: T.M.A.	CHECKED BY:	APPROVED BY:
DATE: 10-27-20	JOB NO.: MDL2102020	DRAWING NAME: SL2TR-008	REVISION NO.: 0



PLAN

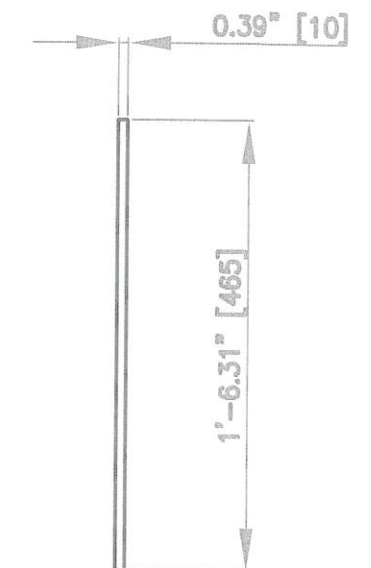
ITEM 6 BOTTOM PLATE C.S.
(1 REQUIRED EA.)



SIDE




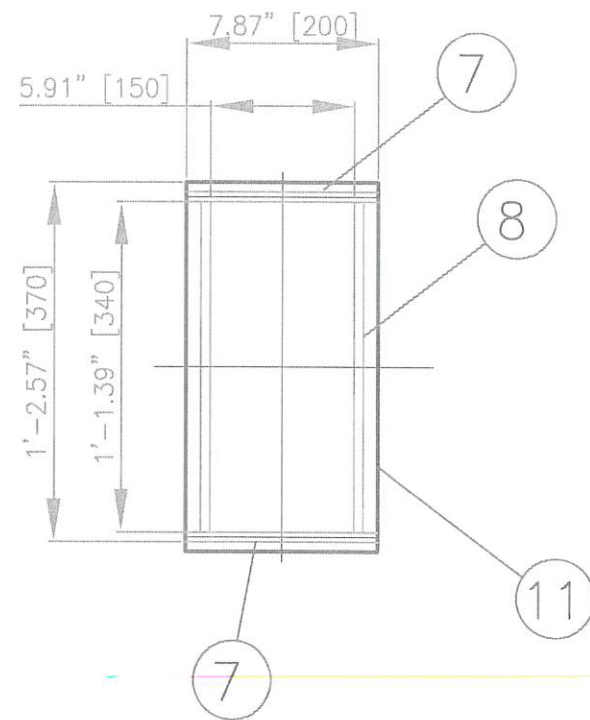
ELEVATION



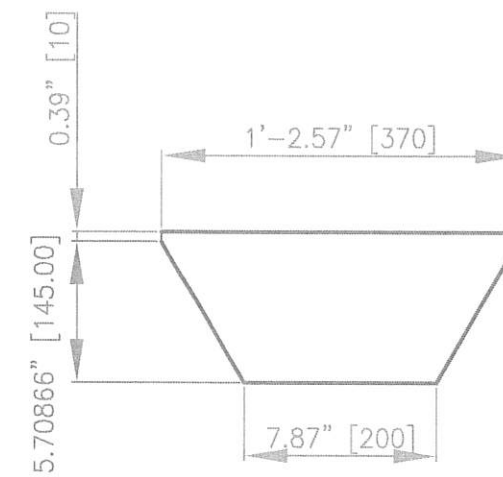
SIDE

ITEM 10 INTERNAL GUSSET C.S.
(2 REQUIRED EA.)

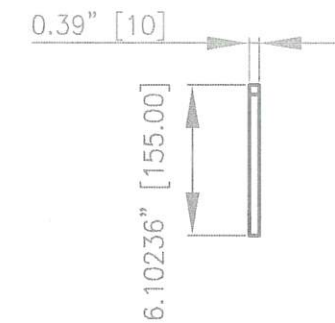
REVISION NO.	DESCRIPTION	DATE	BY:	McDUFFIE COAL TERMINAL SHIPLOADER 2 – EQUALIZER/TRUCK REPLACE. ITEMS 6&10 – BOTTOM PLATE & GUSSETS	<div>  ALABAMA STATE PORT AUTHORITY </div>
REVISION NO.	DESCRIPTION	DATE	BY:		
REVISION NO.	DESCRIPTION	DATE	BY:		
REVISION NO.	DESCRIPTION	DATE	BY:		
REV 0	ISSUED FOR BID	02/03/21	TMA		
				MOBILE	ALABAMA
				SCALE: N/A	DRAWN BY: T.M.A.
				DATE: 10-27-20	CHECKED BY:
				JOB NO.: MDL2102020	APPROVED BY:
				DRAWING NAME: SL2TR-009	REVISION NO.: 0



SKID PLATE ASSYMBLY

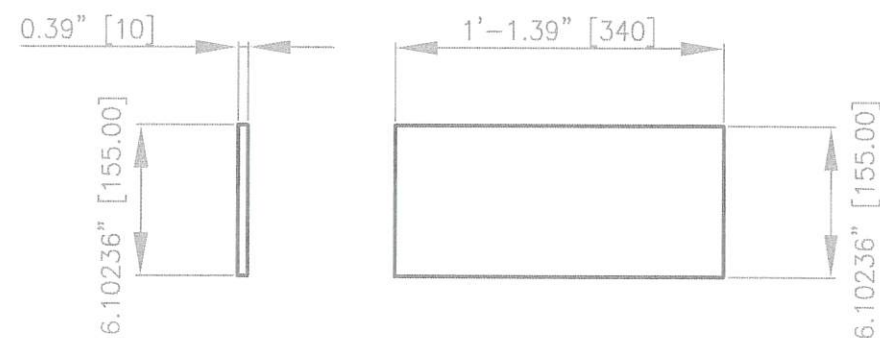


ELEVATION



SIDE

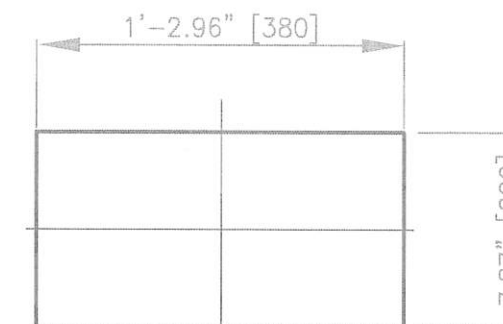
ITEM 7 SKID GUSSET, C.S.
(2 REQUIRED EA.)



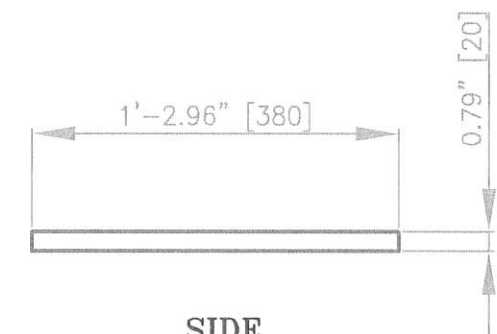
SIDE

ELEVATION

ITEM 11 SKID INTERNAL GUSSET, C.S.
(2 REQUIRED EA.)



PLAN



SIDE

ITEM 8 SKID PLATE, C.S.
(1 REQUIRED EA.)

REVISION NO.	DESCRIPTION	DATE	BY:
REVISION NO.	DESCRIPTION	DATE	BY:
REVISION NO.	DESCRIPTION	DATE	BY:
REVISION NO.	DESCRIPTION	DATE	BY:
REVISION NO.	DESCRIPTION	DATE	BY:
REV 0	ISSUED FOR BID	02/03/21	TMA

McDUFFIE COAL TERMINAL
SHIPLOADER 2 - EQUALIZER/TRUCK REPLACE.

ITEMS 7 8 & 11- SKID PLATE ASSYMBLY

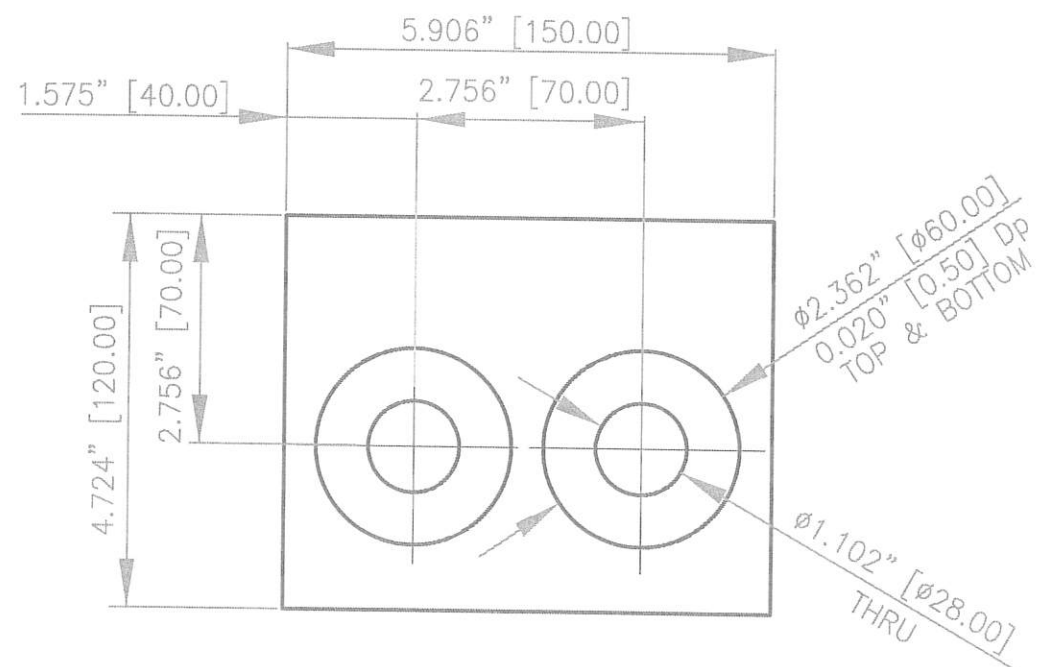


ALABAMA STATE
PORT AUTHORITY

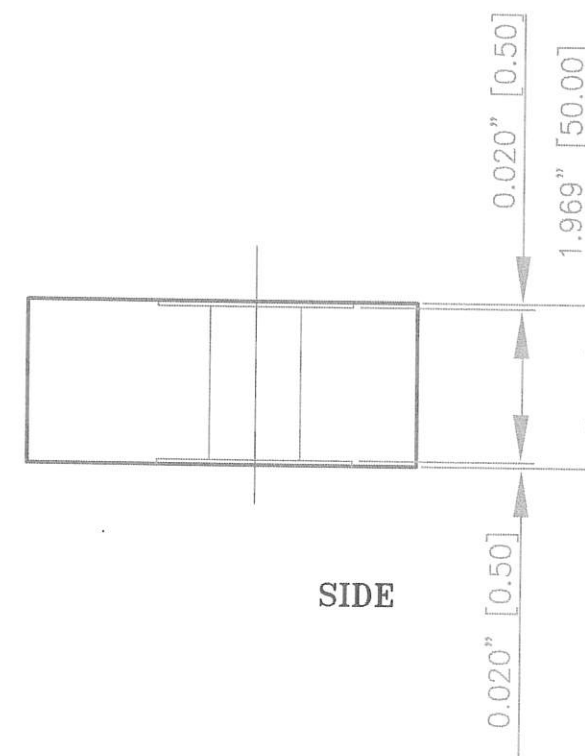
MOBILE

ALABAMA

SCALE: N/A	DRAWN BY: T.M.A.	CHECKED BY:	APPROVED BY:
DATE: 10-27-20	JOB NO.: MDL2102020	DRAWING NAME: SL2TR-010	REVISION NO.: 0




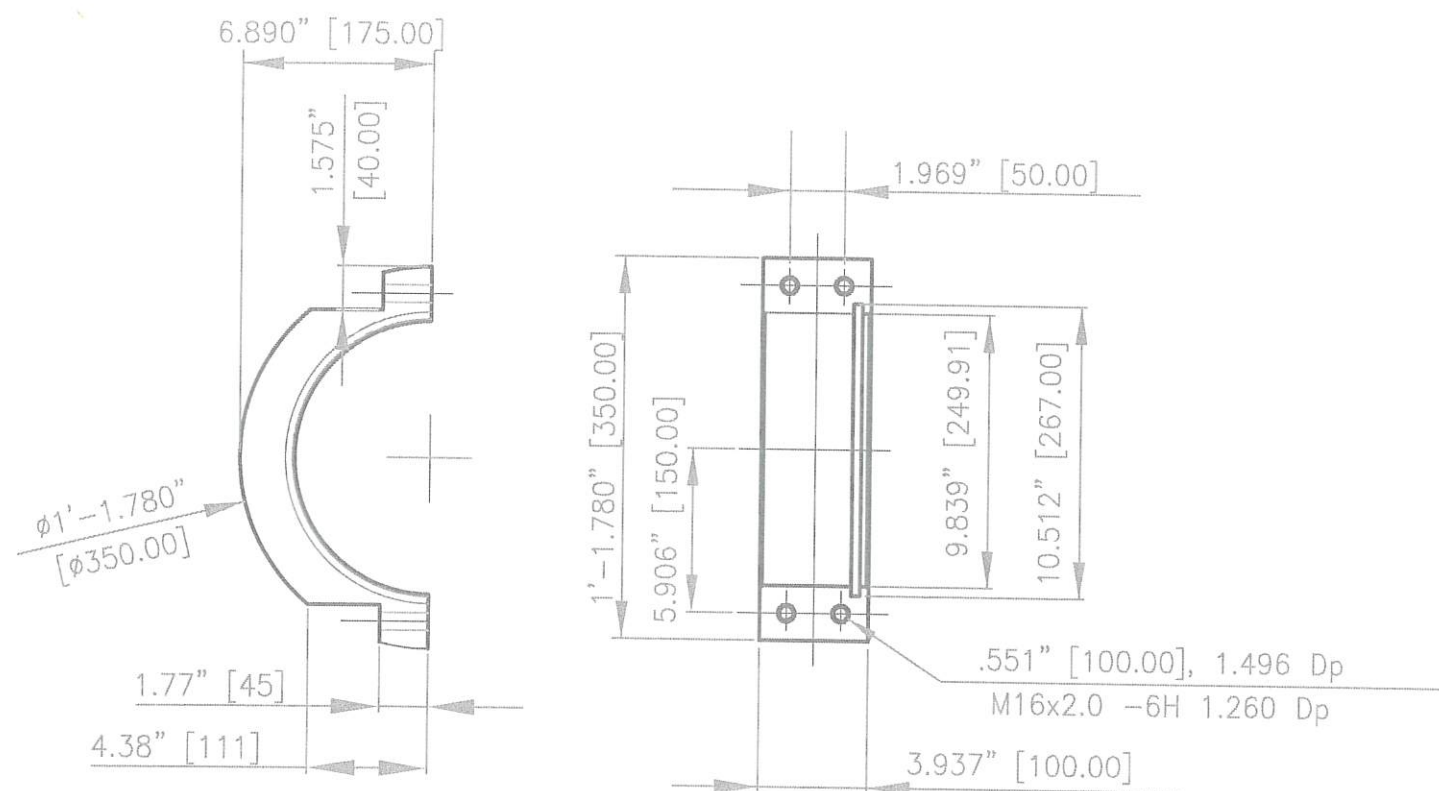
PLAN



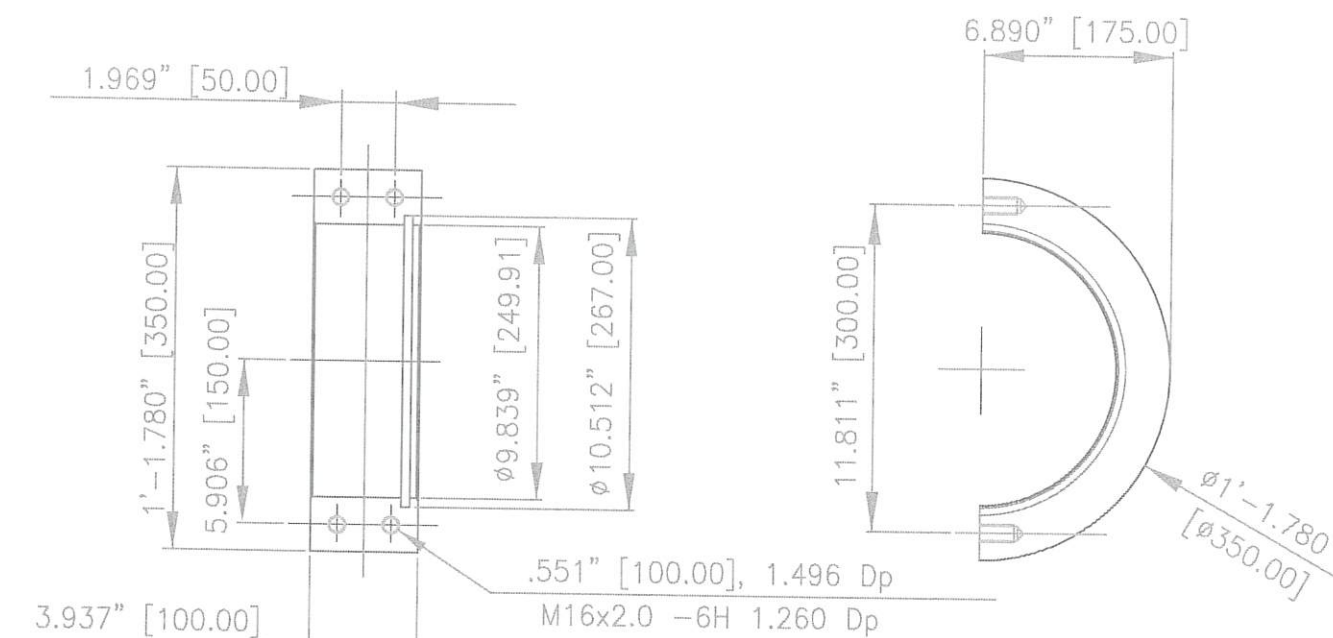
SIDE

ITEM 9 MOUNTING PLATE, C.S.
(1 REQUIRED EA.)

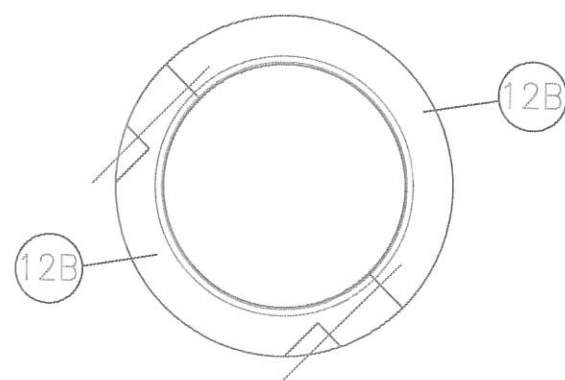
REVISION NO.	DESCRIPTION	DATE	BY:	McDUFFIE COAL TERMINAL SHIPLOADER 2 – EQUALIZER/TRUCK REPLACE.	 ALABAMA STATE PORT AUTHORITY
REVISION NO.	DESCRIPTION	DATE	BY:		
REVISION NO.	DESCRIPTION	DATE	BY:		
REVISION NO.	DESCRIPTION	DATE	BY:		
REV 0	ISSUED FOR BID	02/03/21	TMA		
ITEM 9 – MOUNTING PLATE				SCALE: N/A	DRAWN BY: T.M.A.
				DATE: 10-27-20	CHECKED BY:
				JOB NO.: MDL2102020	APPROVED BY:
				DRAWING NAME: SL2TR-011	REVISION NO.: 0



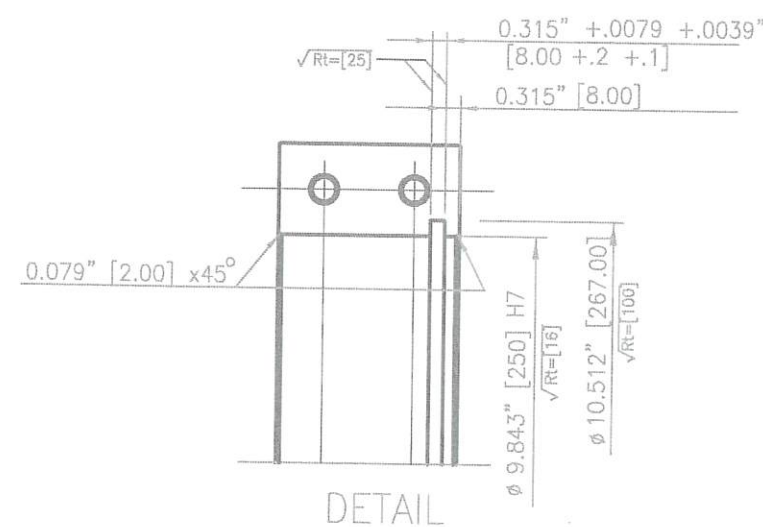
ITEM 12 B
HUB (2 REQUIRED EA.)




ITEM 12 A
HUB (2 REQUIRED EA.)



ITEM 12
HUB (2 REQUIRED EA.)



DETAIL

REVISION NO.	DESCRIPTION	DATE	BY:	McDUFFIE COAL TERMINAL SHIPLOADER 2 - EQUALIZER/TRUCK REPLACE.	 ALABAMA STATE PORT AUTHORITY
REVISION NO.	DESCRIPTION	DATE	BY:		
REVISION NO.	DESCRIPTION	DATE	BY:		
REVISION NO.	DESCRIPTION	DATE	BY:		
REVISION NO.	DESCRIPTION	DATE	BY:		
REV 0	ISSUED FOR BID	02/03/21	TMA	ITEM 12 - WHEEL HUB	MOBILE SCALE: N/A DATE: 10-27-20 DRAWN BY: T.M.A. JOB NO.: MDL2102020 CHECKED BY: DRAWING NAME: SL2TR-012 APPROVED BY: REVISION NO.: 0